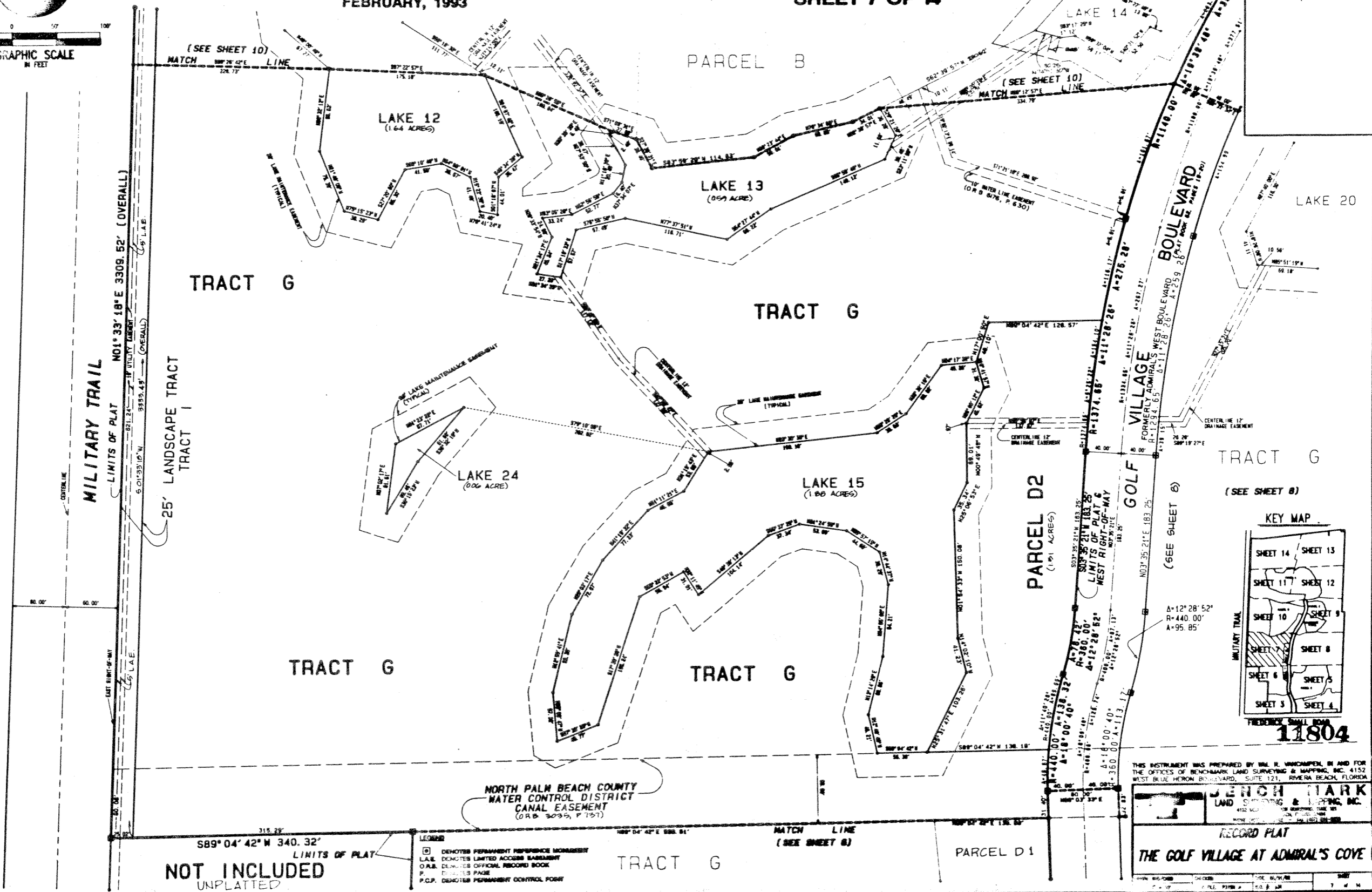




# THE GOLF VILLAGE AT ADMIRAL'S COVE

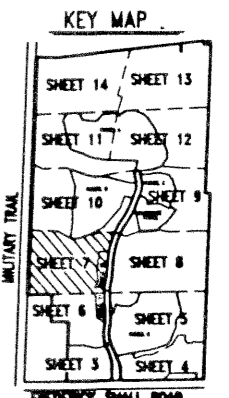
BEING A REPLAT OF A PORTION OF ADMIRAL'S COVE WEST PLAT NO. 1, AS RECORDED IN PLAT BOOK 62, PAGE 19, PUBLIC RECORDS, PALM BEACH COUNTY, FLORIDA, AND LYING IN SECTION 13, TOWNSHIP 41 SOUTH, RANGE 42 EAST, TOWN OF JUPITER, PALM BEACH COUNTY, FLORIDA  
FEBRUARY, 1993  
SHEET 7 OF 14

**57**  
70, 57



NOT INCLUDED UNPLATTED

- LEGEND
- DENOTES PERMANENT REFERENCE MONUMENT
  - L.A.E. DENOTES LIMITED ACCESS EASEMENT
  - O.A.B. DENOTES OFFICIAL RECORD BOOK
  - P. DENOTES PAGE
  - P.C.P. DENOTES PERMANENT CONTROL POINT



THIS INSTRUMENT WAS PREPARED BY WILKINS, WOODRUFF, AND ASSOCIATES, INC. FOR THE OFFICES OF BENCHMARK LAND SURVEYING & MAPPING, INC. 4152 WEST BLUE HERON BOULEVARD, SUITE 121, RIVERA BEACH, FLORIDA

**BENCHMARK LAND SURVEYING & MAPPING, INC.**

RECORD PLAT

**THE GOLF VILLAGE AT ADMIRAL'S COVE**

11804