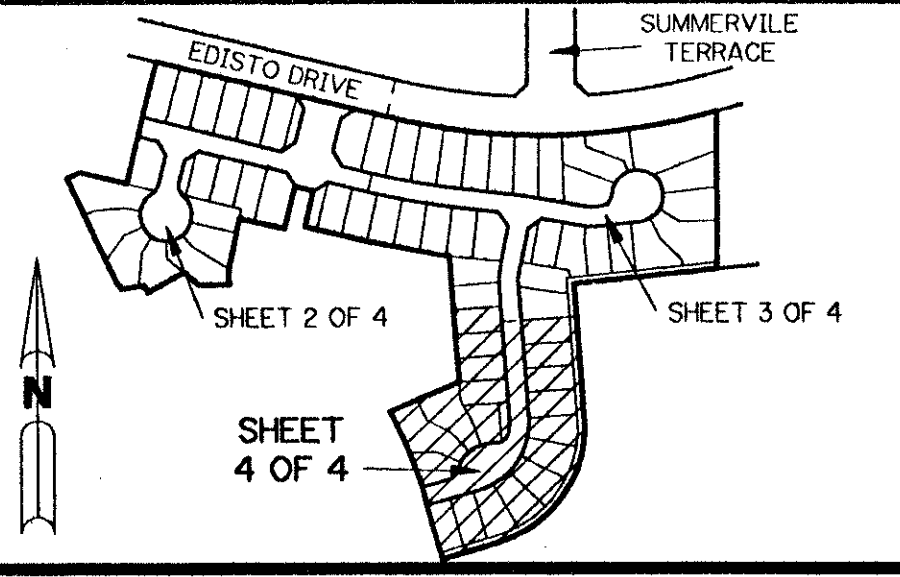


A PART OF LAKE CHARLESTON PLANNED UNIT DEVELOPMENT

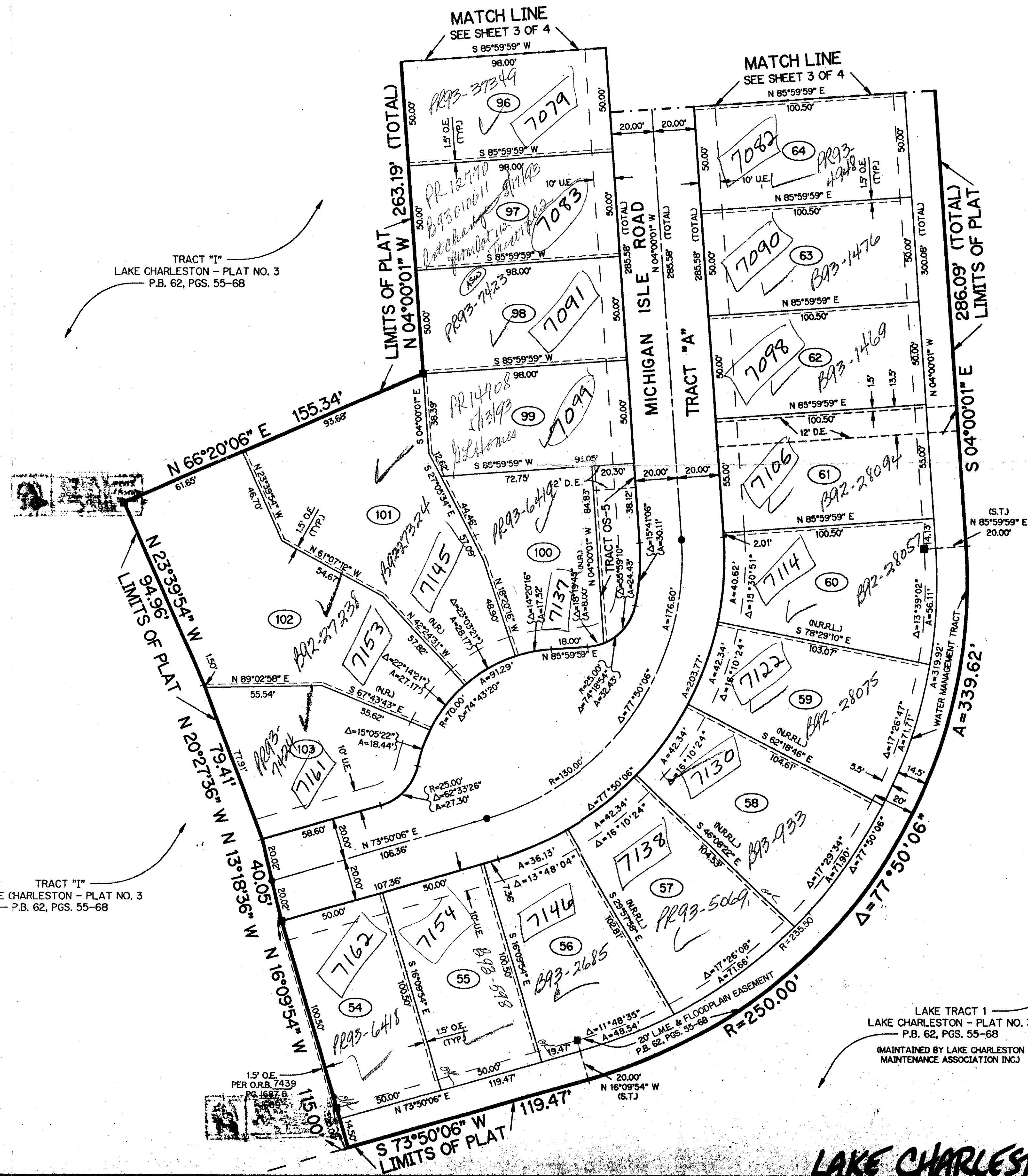
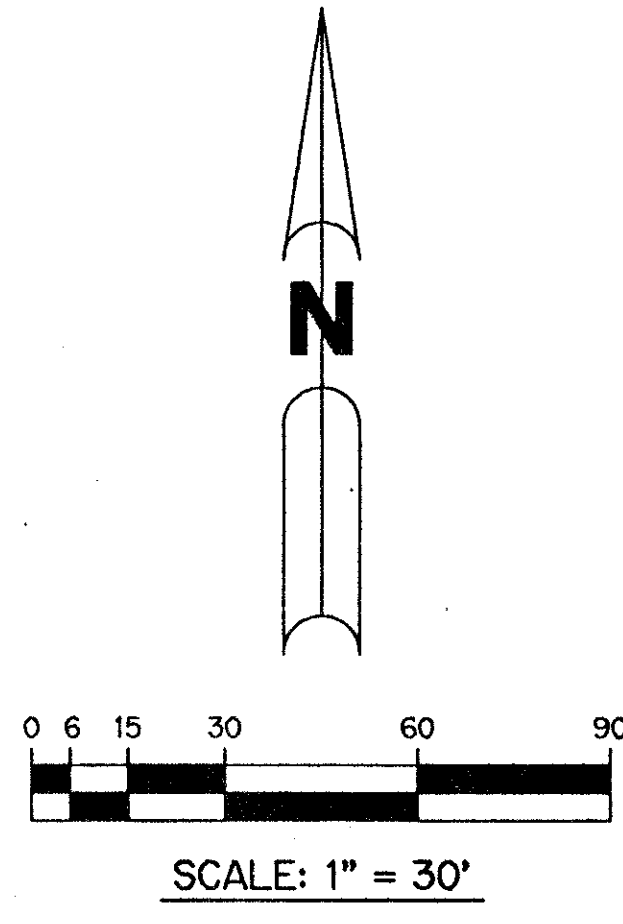
LAKE CHARLESTON - TRACT "I" - PLAT ONE

BEING A REPLAT OF A PORTION OF TRACT "I" ACCORDING TO THE PLAT OF LAKE CHARLESTON PLAT NO. 3 - P.U.D. AS RECORDED IN PLAT BOOK 62, PAGES 55 THROUGH 68 INCLUSIVE, OF THE PUBLIC RECORDS OF PALM BEACH COUNTY, FLORIDA. SECTION 9, TOWNSHIP 45 SOUTH, RANGE 42 EAST

SHEET 4 OF 4 MAY, 1992



KEY MAP N.T.S.



LAKE TRACT 1
LAKE CHARLESTON - PLAT NO. 3
P.B. 62, PGS. 55-68
MAINTAINED BY LAKE CHARLESTON
MAINTENANCE ASSOCIATION INC.

NOTE:
FLOODPLAIN EASEMENT WITHIN WATER MANAGEMENT TRACT IS SUBJECT TO FLOODING DURING THE 3 YEAR 24 HOUR RAINFALL EVENT.

THIS INSTRUMENT PREPARED BY
PERRY C. WHITE P.L.S. 4213 STATE OF FLORIDA
LAWSON, NOBLE AND ASSOCIATES, INC.
ENGINEERS PLANNERS SURVEYORS
WEST PALM BEACH, FLORIDA

0533-015
PET. 86-96
ALLOC. #0009

LAKE CHARLESTON-TRACT "I"-PLAT ONE

SUBDIVISION * LAKE CHARLESTON TRACT "I"
BOOK 70
FLOOD ZONE B
QUAD * 49
SE 86-96
SUB NAME Same
9/15/92

T&Z = 437