

THIS INSTRUMENT PREPARED BY
 LONDON M. CROSS OF
 CARNAHAN AND ASSOCIATES, INC.
 CONSULTING ENGINEERS
 ENGINEERS SURVEYORS PLANNERS
 6191 WEST ATLANTIC BLVD. MARGATE, FLORIDA 33063
 DECEMBER 1991 870610L JSH

RIVIERA, P.U.D

SWEETWATER SECTION THREE REPLAT

303-013

87

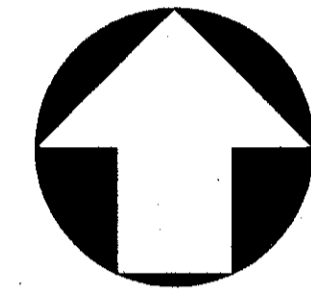
BEING A REPLAT OF A PORTION OF PARCEL "A" OF THE PLAT ENTITLED
 SWEETWATER SECTION THREE AS RECORDED IN PLAT BOOK 56 AT PAGES
 112 AND 113 OF THE PUBLIC RECORDS OF PALM BEACH COUNTY,
 FLORIDA, LYING IN SECTION 1, TOWNSHIP 47 SOUTH, RANGE 41
 EAST AND SECTION 2, TOWNSHIP 47 SOUTH, RANGE 41 EAST.
 PALM BEACH COUNTY, FLORIDA

STATE OF FLORIDA
 COUNTY OF PALM BEACH
 THIS PLAT WAS FILED FOR
 RECORD AT
 THIS DAY OF
 A.D., 199 AND DULY RECORDED
 IN PLAT BOOK ON PAGES
 AND
 MILTON T. BAUER, CLERK
 BY: DC

SHEET 2 OF 2 SHEETS

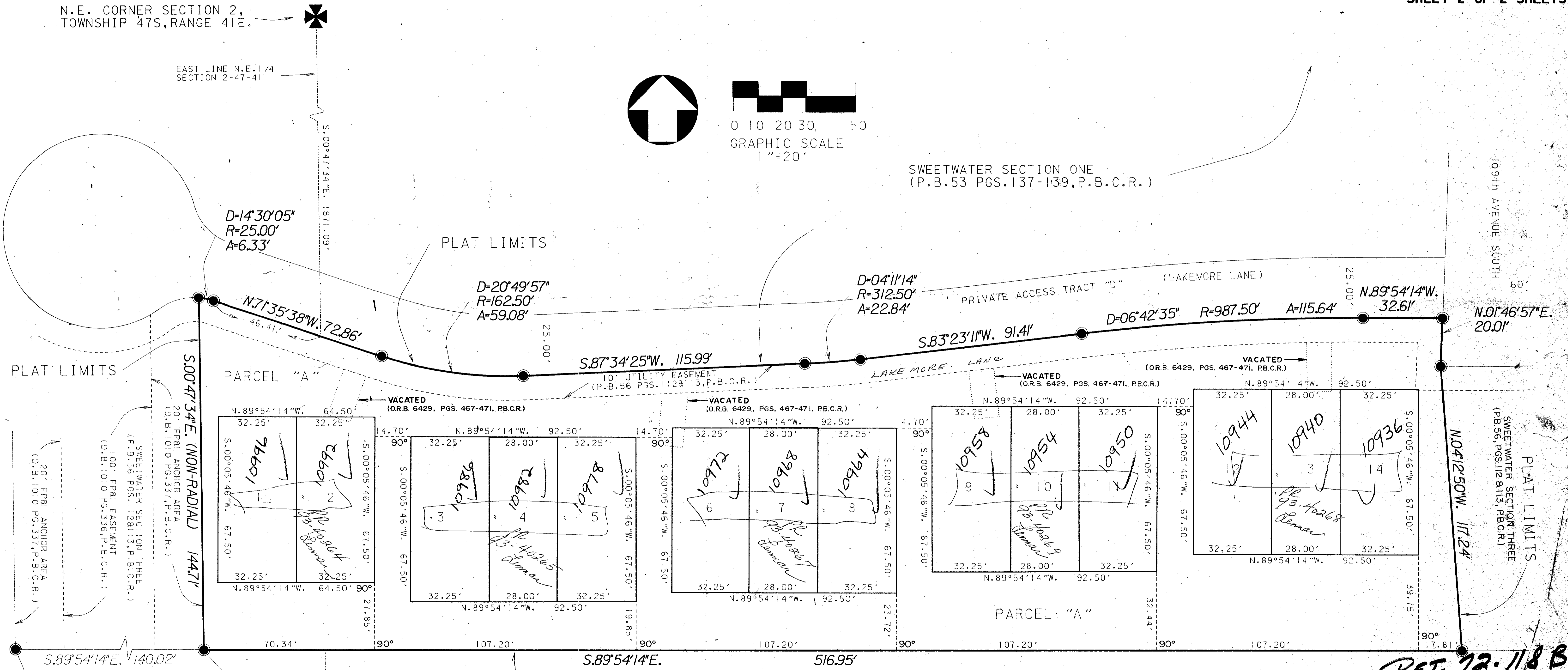
N.E. CORNER SECTION 2,
 TOWNSHIP 47S, RANGE 41E.

EAST LINE N.E. 1/4
 SECTION 2-47-41



0 10 20 30 50
 GRAPHIC SCALE
 1" = 20'

SWEETWATER SECTION ONE
 (P.B. 53 PGS. 137-139, P.B.C.R.)



T&Z = 881

SUBDIVISION # SWEETWATER SEC. 3
 PAGE 87
 FLOOD MAP # 1006
 ZONING AR-1 PUD
 QUAD # 68
 SE 72-118B
 PUD NAME RIVIERA, PUD

P.O.C.
 S.W. CORNER PARCEL "A"
 SWEETWATER SECTION THREE
 (P.B. 56 PGS. 112 & 113, P.B.C.R.)
 FND. P.R.M. No. 3550

FLORIDA FRUIT LANDS COMPANY'S SUBDIVISION NO. 2
 (P.B. 1 PG. 102, P.B.C.R.)

PET. 72-118 B
 COLLECT
 ALLOC.
 69/87 #0001

0303-013

SWEETWATER SECTION 3 REPLAT