

LEGEND LAKE ESTATES

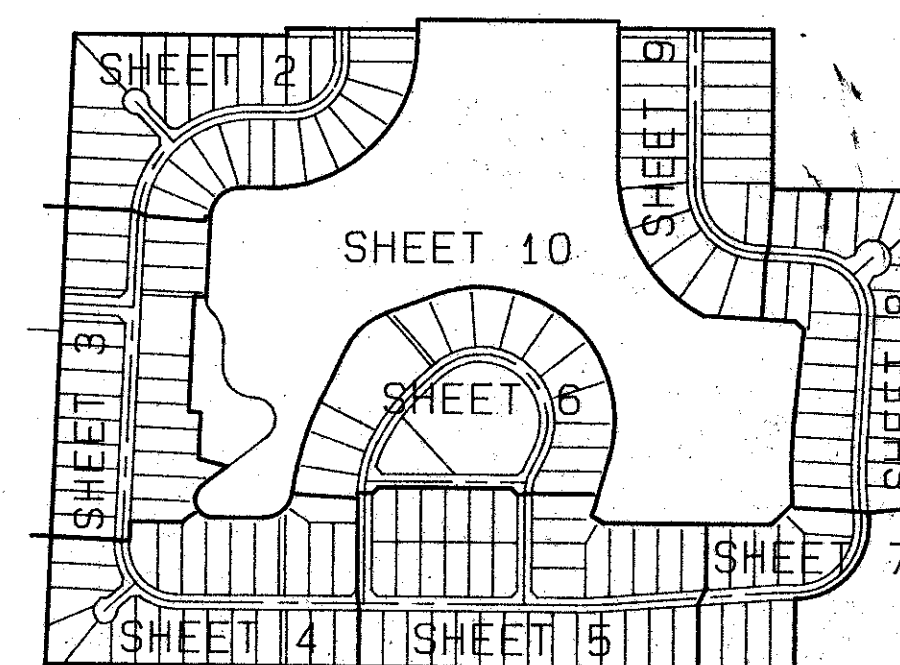
A REPLAT OF A PORTION OF "THE HUNT", P. U. D., PLAT BOOK 32, PAGES 119 THOUGH 125
SITUATE IN SECTION 30 AND 31, TOWNSHIP 44 SOUTH, RANGE 42 EAST,
PALM BEACH COUNTY, FLORIDA.

JANUARY, 1992

SHEET 3 OF 10

0467-001

41



STATE OF FLORIDA
COUNTY OF PALM BEACH
THIS PLAT WAS FILED FOR
RECORD AT _____ DAY OF
THIS _____ AD, 1992, AND
DULY RECORDED IN PLAT BOOK
ON PAGES _____ AND
M. T. Bower, CLERK
CIRCUIT COURT
BY: _____ DC



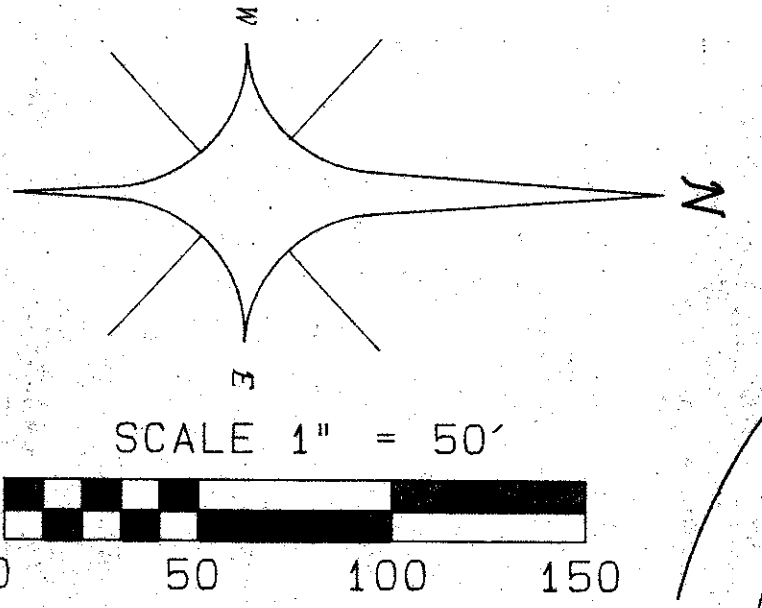
REPLAT AREA SEE SITE PLAN

PET. [REDACTED] 87-4
ALLOC. #0001
COLLECT

RISIPRD

0467-001

69/41



TRACT D
WATER MANAGEMENT TRACT
MAINTAINED BY LEGEND LAKE ESTATES
HOMEOWNERS ASSOCIATION

ATLANTIC - CARIBBEAN MAPPING, INC.
PROFESSIONAL LAND SURVEYORS
1860 OLD OKEECHOBEE ROAD
WEST PALM BEACH, FLORIDA 33411
(407) 851-1111 FAX (407) 667-5897

90181 LEGEND LAKE ESTATES
RECORD PLAT

SUBDIVISION * LEGEND LAKE ESTATES
BOOK 69 PAGE 41
FLOOD MAP # 170A
QUAD # 48 ZONING RE
SE ZIP CODE 33417
PUD NAME THE HUNT
3037/3042

TAZ-738