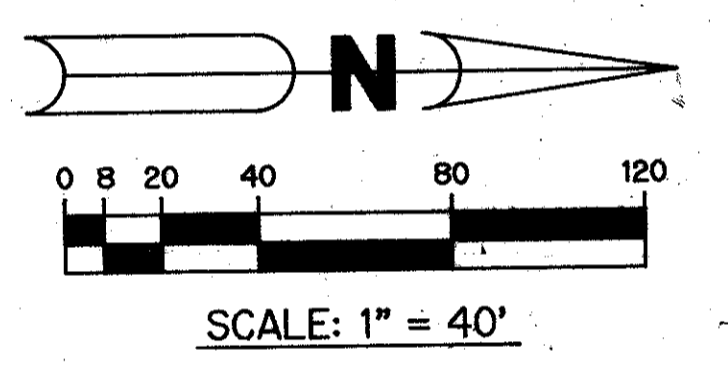
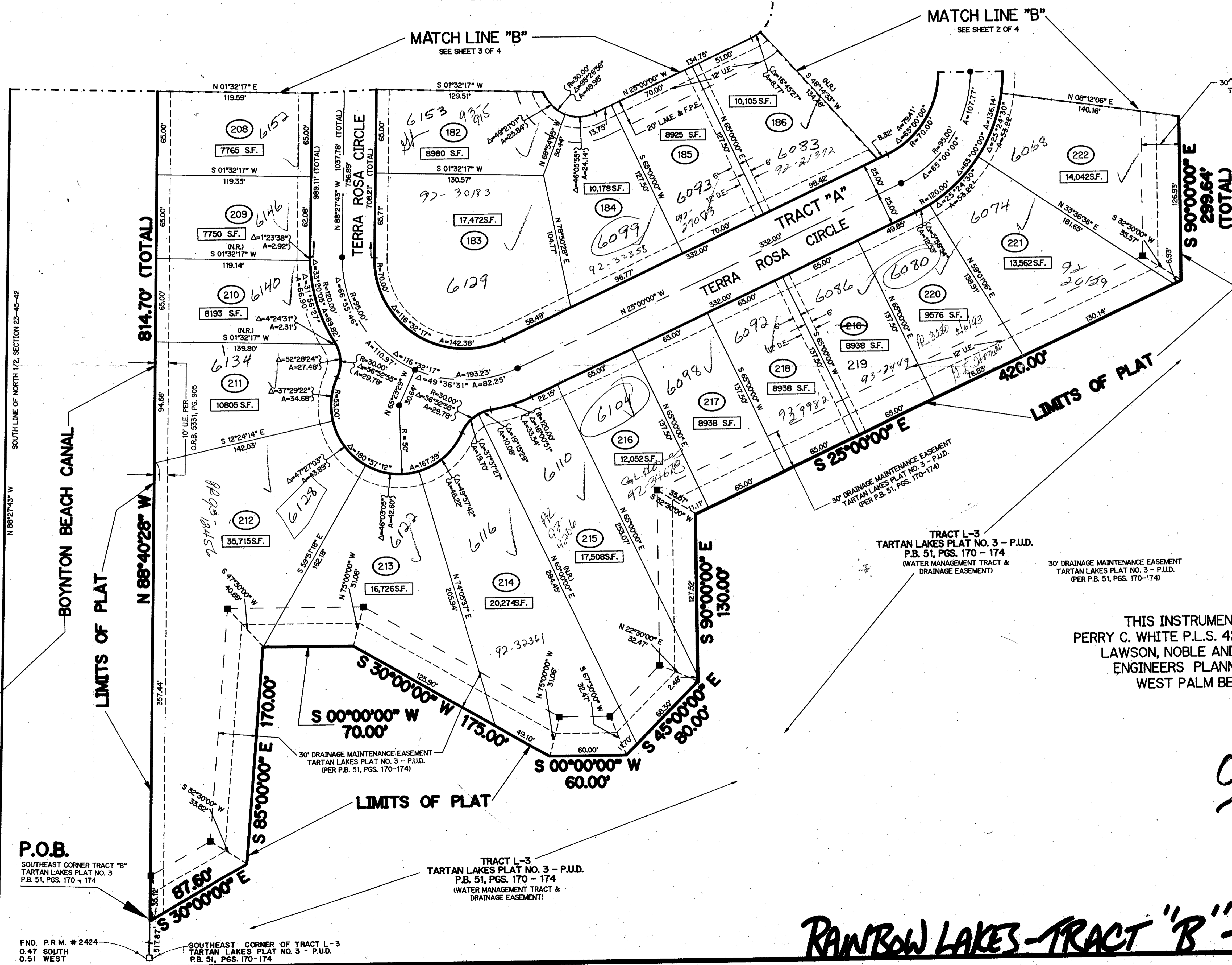


KEY MAP
N.T.S.

RAINBOW LAKES - TRACT "B" - PHASE TWO

(A P.U.D.)
 A REPLAT OF A PORTION OF TRACT "B" ACCORDING TO THE PLAT OF TARTAN LAKES
 PLAT NO. 3 - P.U.D. AS RECORDED IN PLAT BOOK 51, PAGES 170 THROUGH 174,
 INCLUSIVE, OF THE PUBLIC RECORDS OF PALM BEACH COUNTY, FLORIDA.
 SECTIONS 22 AND 23, TOWNSHIP 45 SOUTH, RANGE 42 EAST
 SHEET 4 OF 4 JANUARY, 1992



TRACT L-3
 TARTAN LAKES PLAT NO. 3 - P.U.D.
 P.B. 51, PGS. 170 - 174
 (WATER MANAGEMENT TRACT &
 DRAINAGE EASEMENT)

30' DRAINAGE MAINTENANCE EASEMENT
 TARTAN LAKES PLAT NO. 3 - P.U.D.
 (PER P.B. 51, PGS. 170-174)

THIS INSTRUMENT PREPARED BY
 PERRY C. WHITE P.L.S. 4213 STATE OF FLORIDA
 LAWSON, NOBLE AND ASSOCIATES, INC.
 ENGINEERS PLANNERS SURVEYORS
 WEST PALM BEACH, FLORIDA

0316-011
 PET. 79-177C
 09/34

P.O.B.
 SOUTHEAST CORNER TRACT "B"
 TARTAN LAKES PLAT NO. 3
 P.B. 51, PGS. 170 + 174

TRACT L-3
 TARTAN LAKES PLAT NO. 3 - P.U.D.
 P.B. 51, PGS. 170 - 174
 (WATER MANAGEMENT TRACT &
 DRAINAGE EASEMENT)

FND. P.R.M. # 2424
 0.47 SOUTH
 0.51 WEST

SOUTHEAST CORNER OF TRACT L-3
 TARTAN LAKES PLAT NO. 3 - P.U.D.
 P.B. 51, PGS. 170-174

RAINBOW LAKES - TRACT "B" - PHASE TWO SHEET 4 OF 4

T.A.Z. = 444

SUBDIVISION - PHASE 2
 BOOK 6A PAGE 34
 FLOOD MAP # 185A
 QUAD # 35 ZONING RS/SE
 SE ZIP CODE 33437
 PUD NAME SCOTTIC
 22-23-4542