

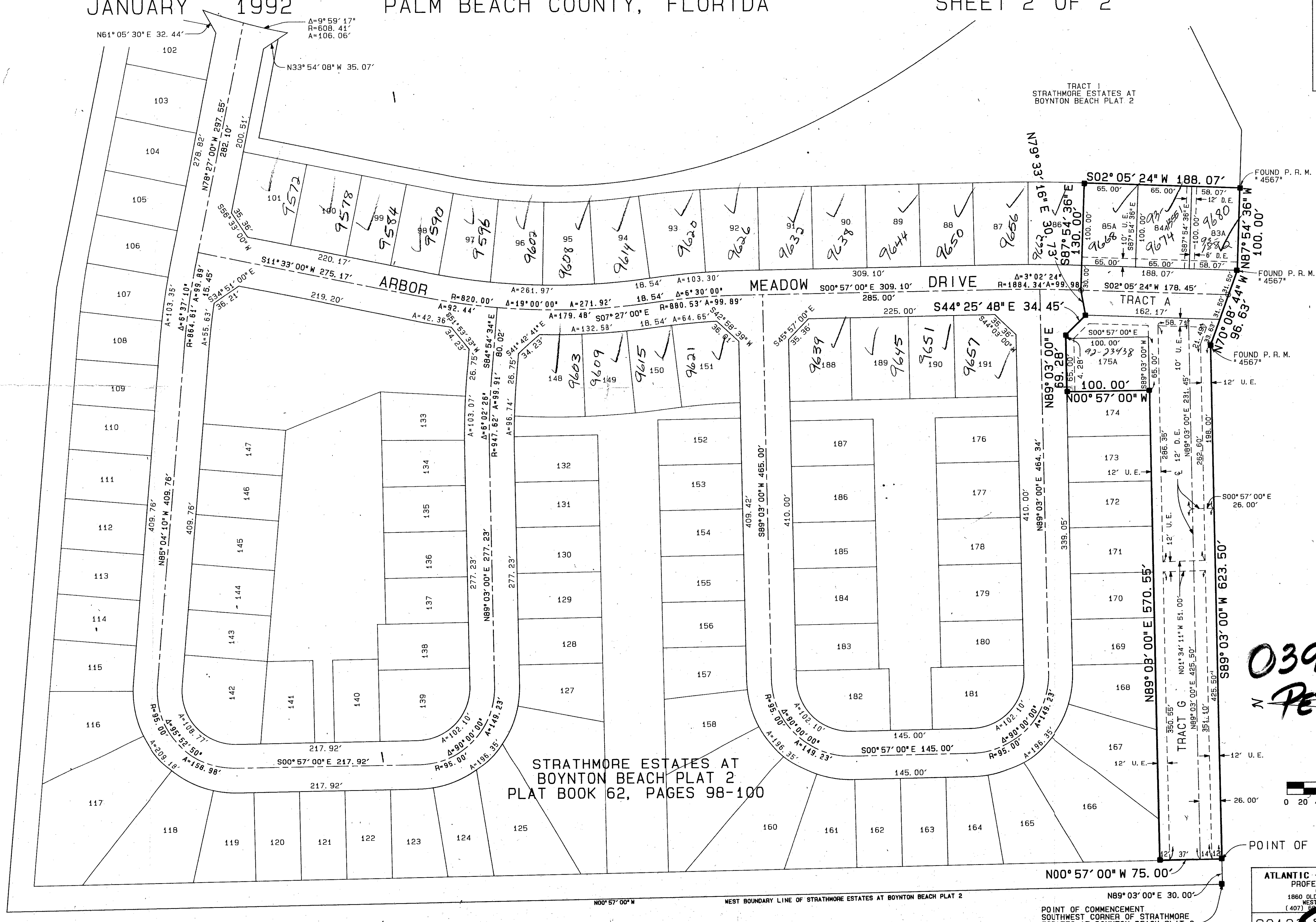
# STRATHMORE ESTATES AT BOYNTON BEACH PLAT 3

0391-008

30

PART OF LAKES OF BOYNTON BEACH P. U. D., BEING A REPLAT OF ALL OF TRACT G, TOGETHER WITH LOTS 83 THROUGH 85, LOT 175 AND A PORTION OF TRACT A, OF "STRATHMORE ESTATES AT BOYNTON BEACH PLAT 2" (P. B. 62, PGS. 98-100) SITUATE IN SECTION 22, TOWNSHIP 45 SOUTH, RANGE 42 EAST.  
 JANUARY 1992 PALM BEACH COUNTY, FLORIDA SHEET 2 OF 2

STATE OF FLORIDA )  
 COUNTY OF PALM BEACH ) SS  
 THIS PLAT WAS FILED FOR RECORD AT \_\_\_\_\_ DAY OF \_\_\_\_\_ AD, 1992 AND DULY RECORDED IN PLAT BOOK \_\_\_\_\_ ON PAGES \_\_\_\_\_ AND \_\_\_\_\_  
 MILTON T. BAUER, CLERK  
 CIRCUIT COURT  
 BY: \_\_\_\_\_ DC



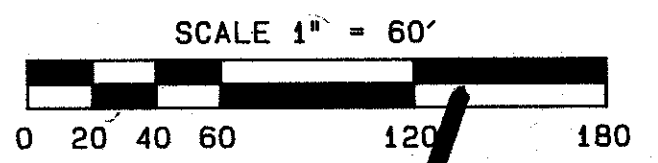
TAZ = 44.3

STRATHMORE ESTATES AT BOYNTON BEACH PLAT 3  
 BOOK 69 PAGE 30  
 FLOOD ZONE B  
 FLOOD MAP #185A  
 QUAD # 35 ZONING RT  
 SE 89-58 ZIP CODE 33437  
 PUD NAME LAKES AT BOYNTON BEACH PLAT 2

STRATHMORE ESTATES AT BOYNTON BEACH PLAT 1 PLAT BOOK 49, PAGES 26-27

STRATHMORE ESTATES AT BOYNTON BEACH PLAT 2 PLAT BOOK 62, PAGES 98-100

0391-008  
 PET. 83.58E



69/30

ATLANTIC - CARIBBEAN MAPPING, INC.  
 PROFESSIONAL LAND SURVEYORS  
 OAK RIDGE BUSINESS PARK  
 1860 OLD OAKSHORE ROAD, SUITE 501  
 WEST PALM BEACH, FLORIDA 33411  
 (407) 833-1100 FAX (407) 687-5897  
 9012 STRATHMORE ESTATES AT BOYNTON BEACH PLAT 3