

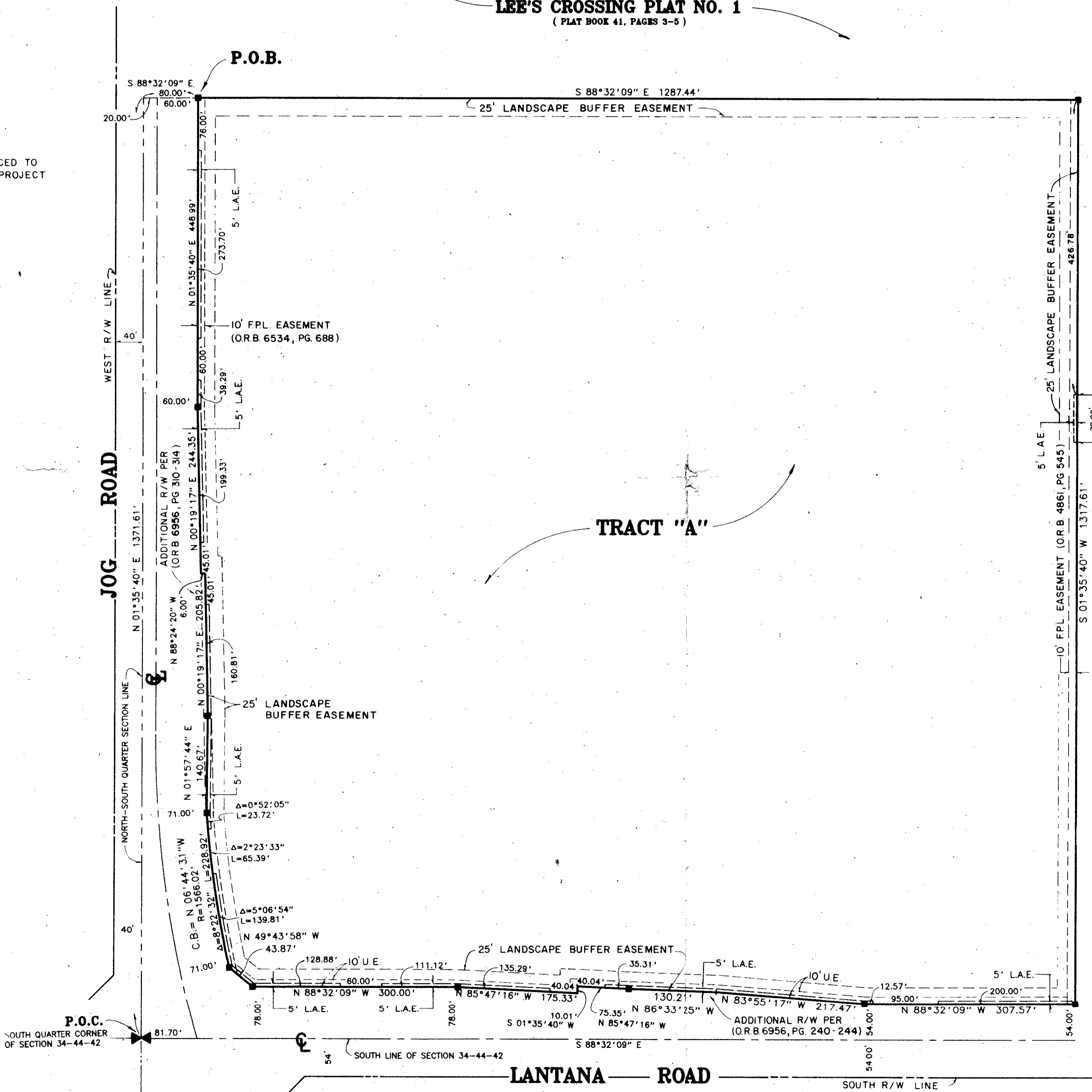
(A P.C.D.)
THE PLAT OF
LEE SQUARE
BEING A PORTION OF SECTION 34, TOWNSHIP 44 SOUTH, RANGE 42 EAST,
PALM BEACH COUNTY, FLORIDA
SHEET 2 OF 2

STATE OF FLORIDA
COUNTY OF PALM BEACH
This Plat was filed for record at _____
M. this _____ day of _____, 19____
and duly recorded in Plat Book No. _____
on Page _____
John B. Dunkle, Clerk of the Circuit Court
By _____ D.C.

* JOG ROAD R/W DATA REFERENCED TO
PALM BEACH COUNTY, FLORIDA PROJECT
NO. 87518

FOUNTAINS SOUTH GOLF COURSE
(PLAT BOOK 67, PAGES 18-22)

LEE'S CROSSING PLAT NO. 1
(PLAT BOOK 41, PAGES 3-5)



HOMES OF LEE'S CROSSING PLAT NO. 9
(PLAT BOOK 53, PAGES 164 & 165)

TRACT "A"

LANTANA ROAD

TRACT 39, LOT 2
HIATUS SECTION 39, TOWNSHIP 44 1/2
SOUTH, RANGE 42 EAST
"PINWOOD SQUARE SHOPPING PLAZA"

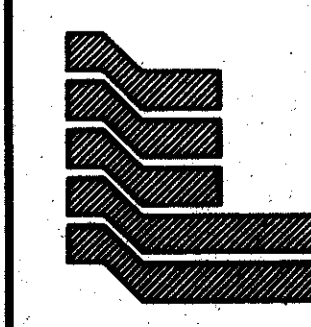
* LANTANA ROAD R/W DATA REFERENCED TO
PALM BEACH COUNTY, FLORIDA PROJECT
NO. 87518 & DRAWING NO. 85269

Scale 1" = 100'

PET. 81-186A
ALLOC. #0001
COLLECT
CR. FILE

0598-001
68/187

SUBDIVISION OF LEE SQUARE
BOOK 68 FLOOD ZONE B
QUAD # 33
SE 81-186A
PUP MAP SAME
35/44/42



Landmark Surveying & Mapping Inc.
1850 FOREST HILL BOULEVARD
PH. (407)433-5405 SUITE 100 W.P.B. FLORIDA

THE PLAT OF LEE SQUARE