

# OKEECHOBEE OFFICE WAREHOUSE - P.C.D.

BEING A REPLAT OF PART OF TRACT 10, BLOCK 1 OF THE PALM BEACH FARMS CO. PLAT NO. 9  
AS RECORDED IN PLAT BOOK 5, PAGE 58 OF THE PUBLIC RECORDS OF PALM BEACH COUNTY, FLORIDA  
IN SECTION 29, TOWNSHIP 43 SOUTH, RANGE 42 EAST  
PALM BEACH COUNTY, FLORIDA

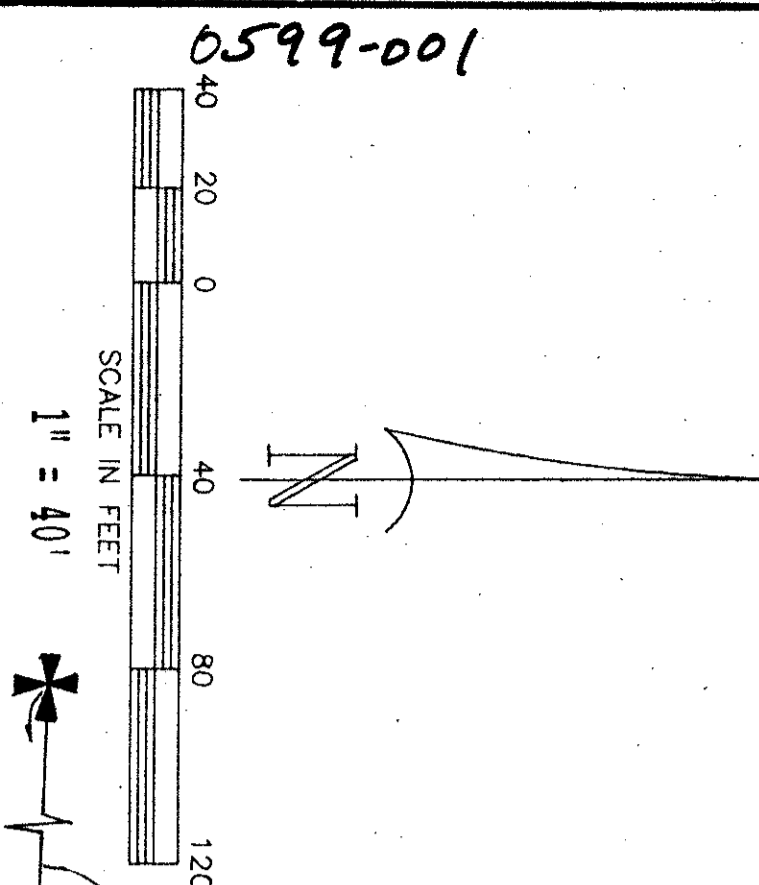
SHEET 2 OF 2 SHEETS

AUGUST 1991

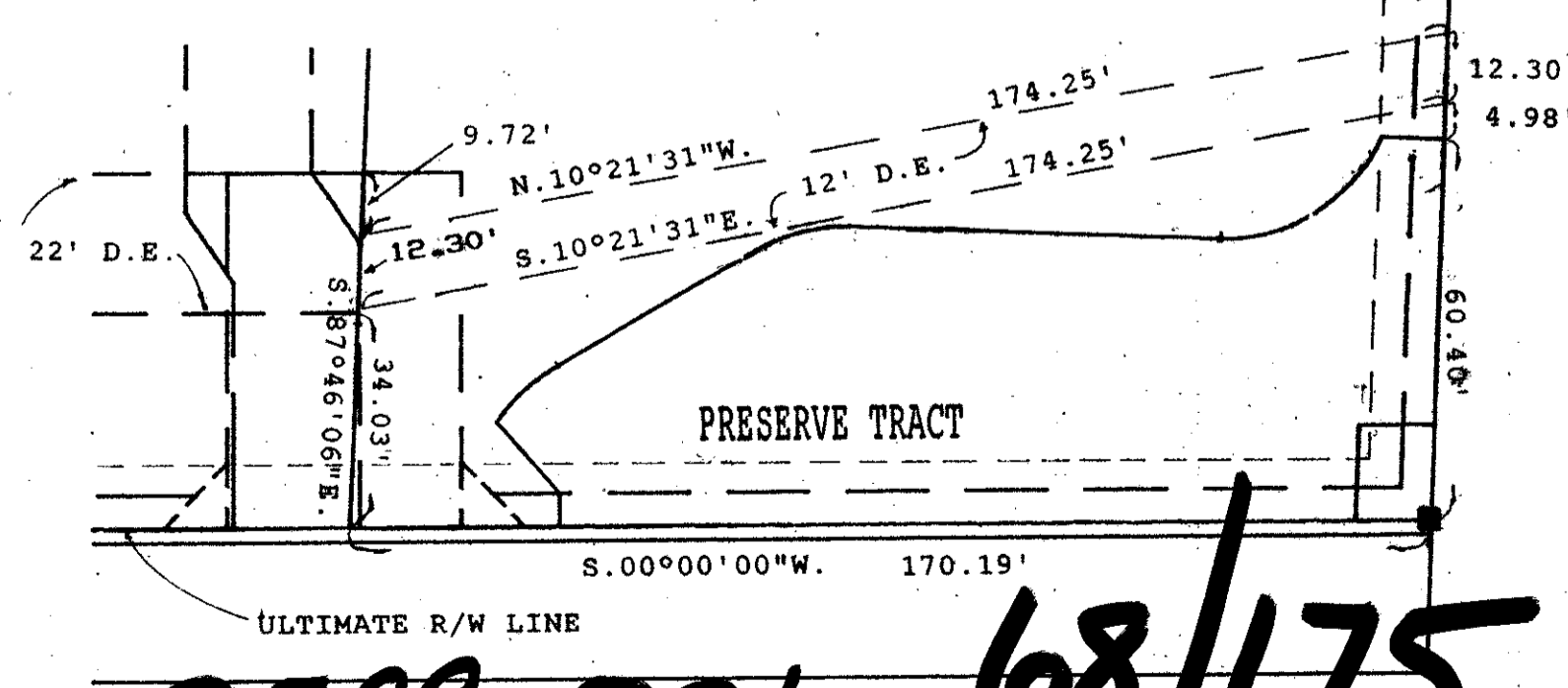
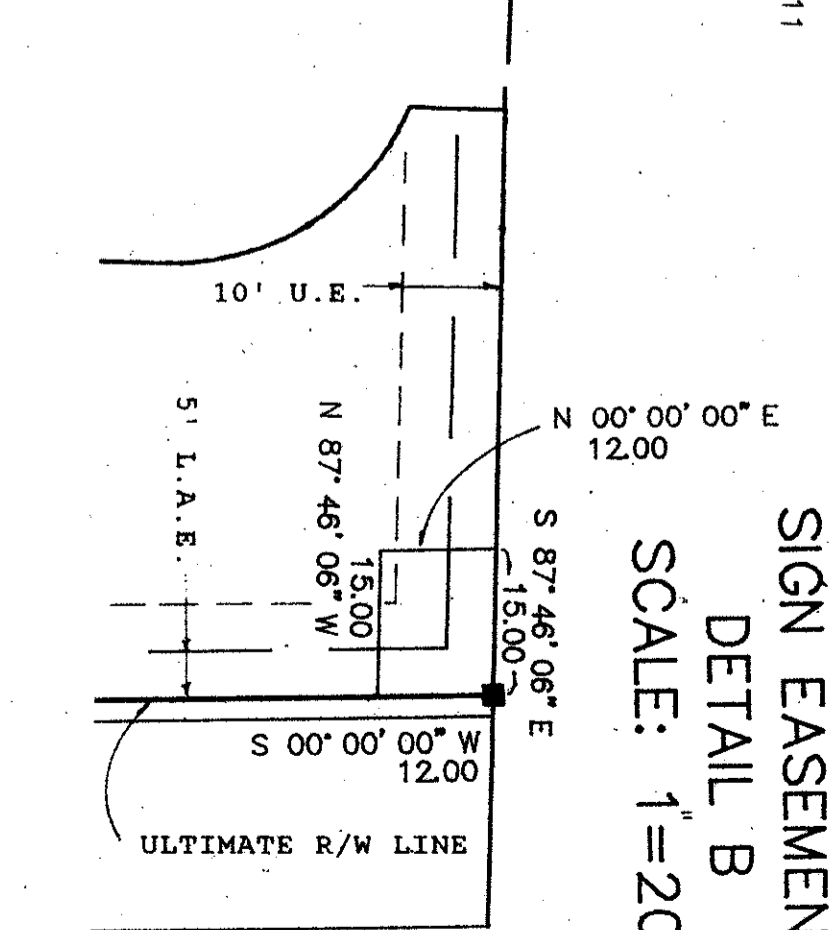
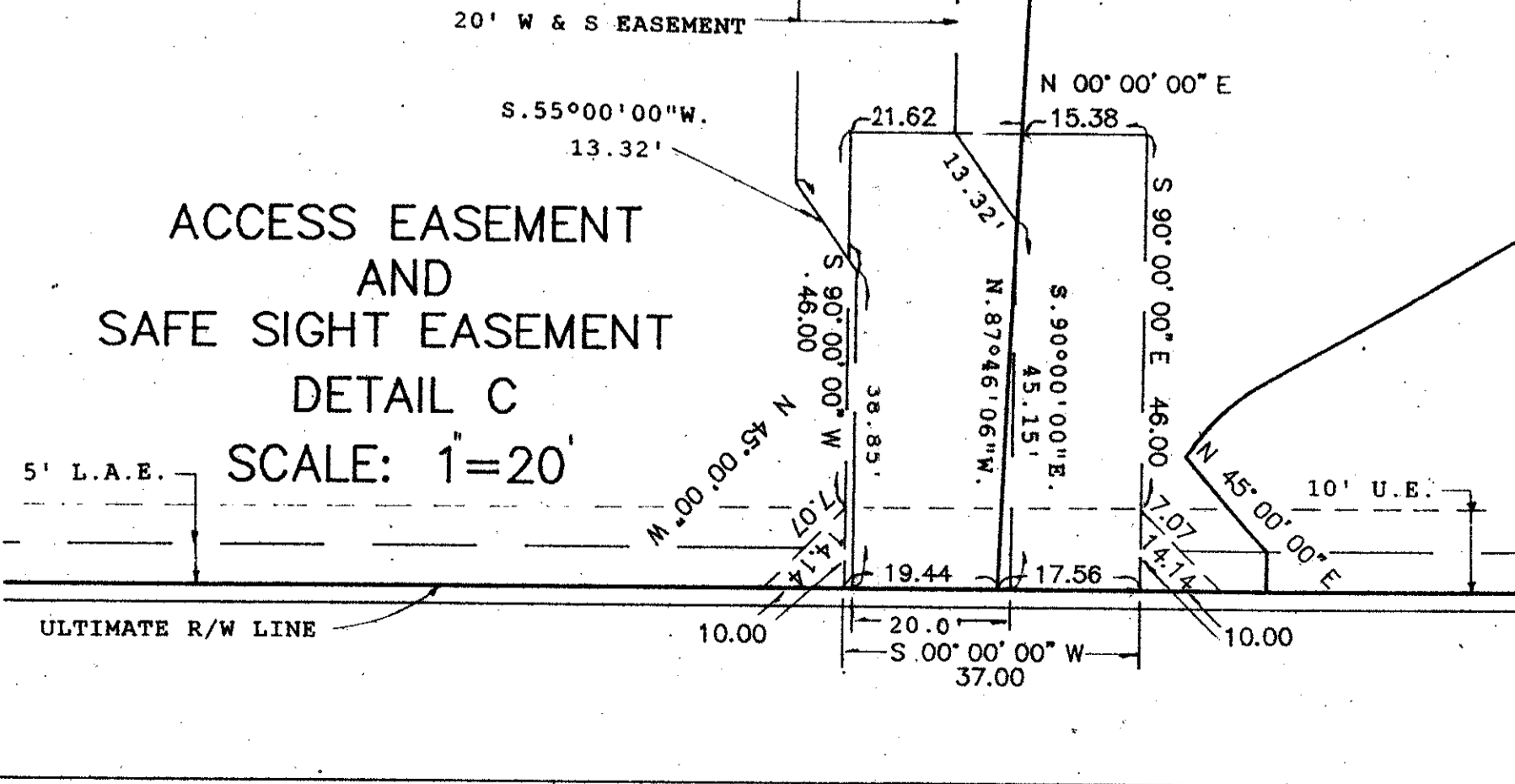
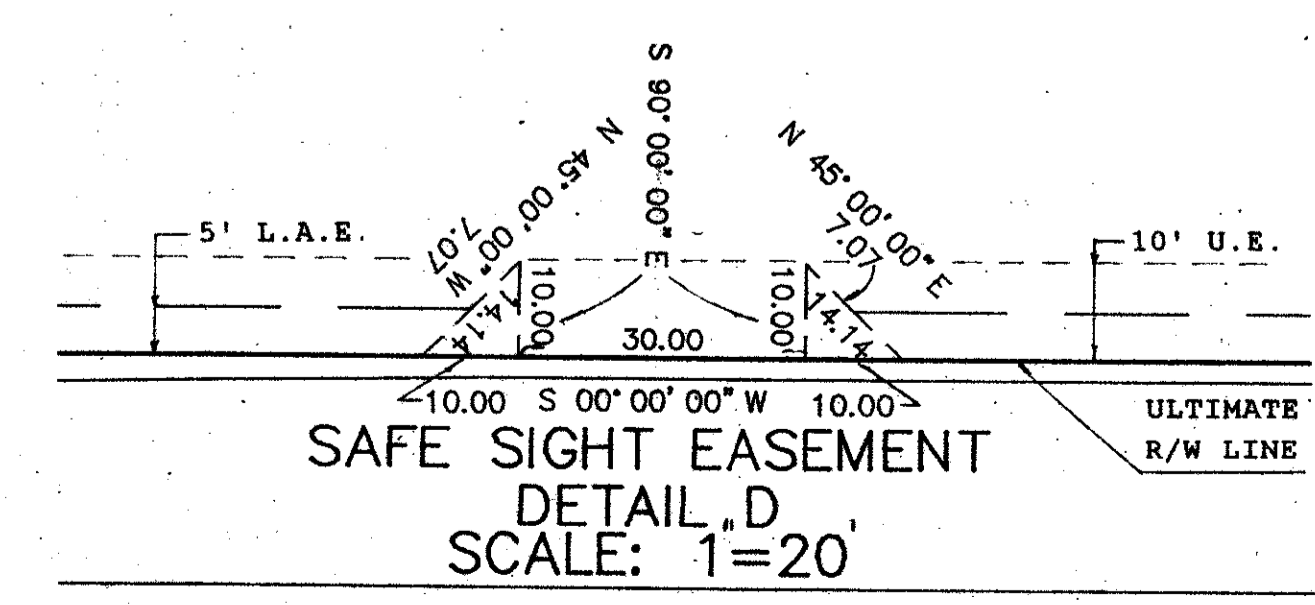
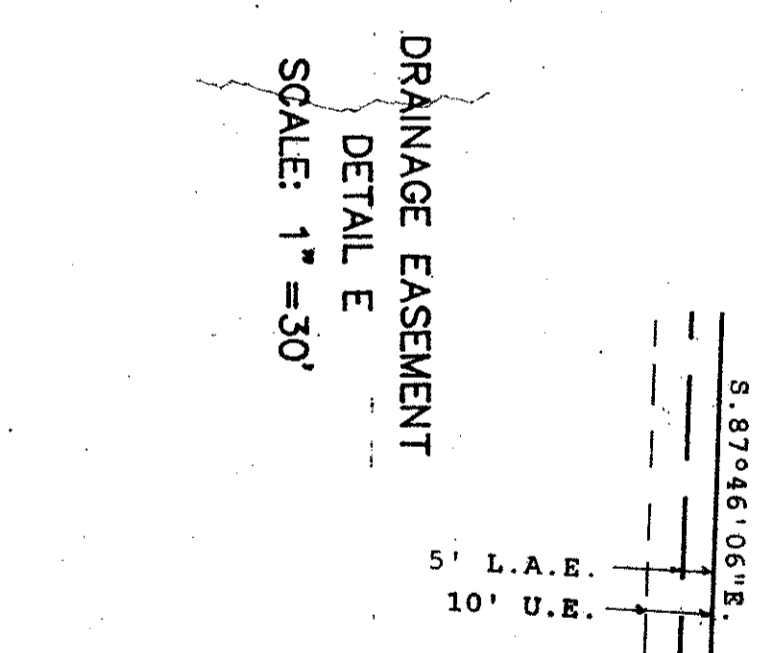
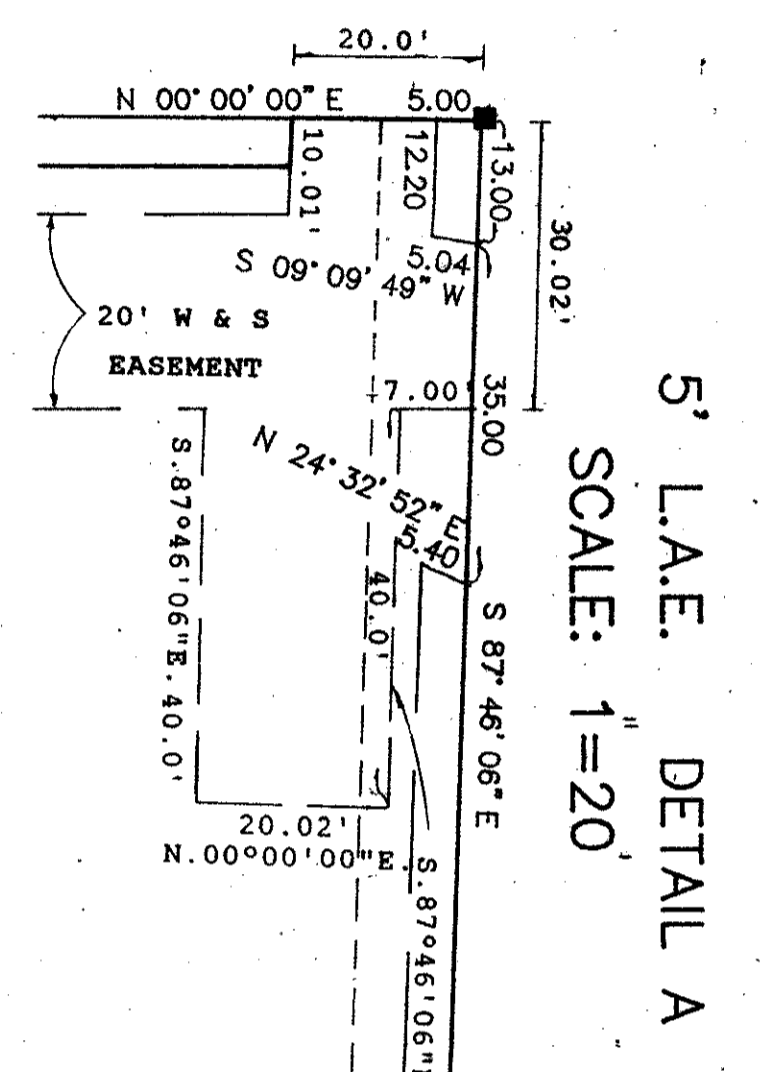
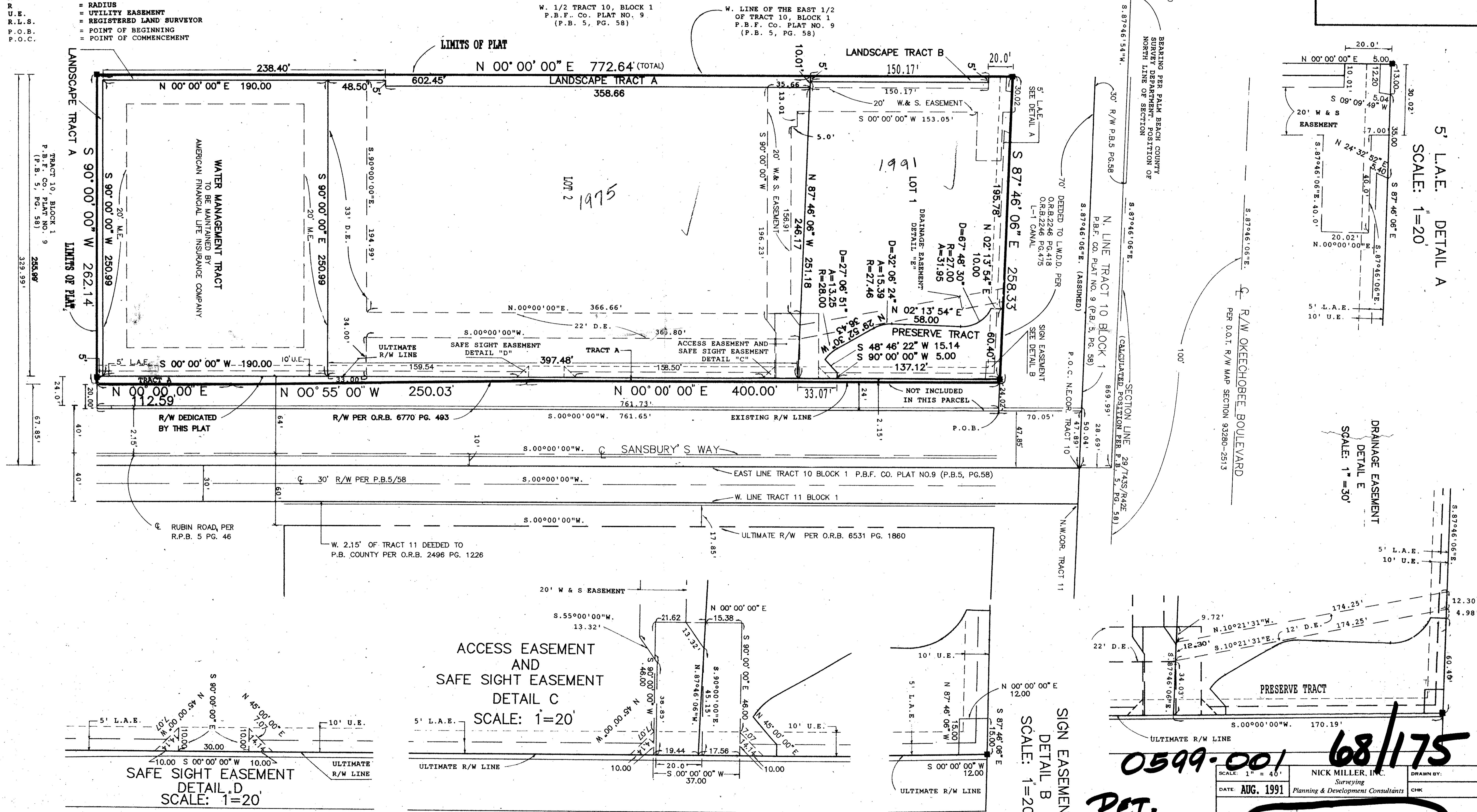
175

**LEGEND**

- PRM = PERMANENT REFERENCE MONUMENT - R.L.S. 3888
- D.E. = DRAINAGE EASEMENT
- M.E. = MAINTENANCE EASEMENT
- L.A.E. = LIMITED ACCESS EASEMENT
- W & S.E. = WATER AND SEWER EASEMENT
- C.L. = CENTERLINE
- O.R.B. = OFFICIAL RECORD BOOK
- PG. = PAGE
- R.P.B. = ROAD PLAT BOOK
- R/W = RIGHT-OF-WAY
- D.O.T. = DEPARTMENT OF TRANSPORTATION
- P.B. = PLAT BOOK
- P.B.F. Co. = PALM BEACH FARMS COMPANY
- No. = NUMBER
- L.W.D.D. = LAKE WORTH DRAINAGE DISTRICT
- CR. = CORNER
- D. = DELTA (CENTRAL ANGLE)
- A. = ARC
- R. = RADIUS
- U.E. = UTILITY EASEMENT
- R.L.S. = REGISTERED LAND SURVEYOR
- P.O.B. = POINT OF BEGINNING
- P.O.C. = POINT OF COMMENCEMENT



PALM BEACH COUNTY BRASS DISC IN CONCRETE. PALM BEACH COUNTY SURVEY DEPARTMENT POSITION OF N.W. CORNER OF SECTION.



TAX # 812

SUBMISSION: OKEECHOBEE OFFICE WAREHOUSE  
BOOK 68 PLAT 175  
O.R.B. 5, PG. 58  
R/S/SE 33411  
PALM BEACH FARMS CO. PLAT 9

0599-001 68/175

PET. 74.117(C) COLLECT

SCALE: 1" = 40'	NICK MILLER, INC. <small>Surveying</small>	DRAWN BY: _____
DATE: AUG. 1991	Planning & Development Consultants	CHK: _____
OKEECHOBEE OFFICE WAREHOUSE - P.C.D.		
2560 RCA Blvd. • Suite 105 Palm Beach Gardens, Florida 33410 (407)627-5200		
		DRAWING NUMBER <b>91030A</b>