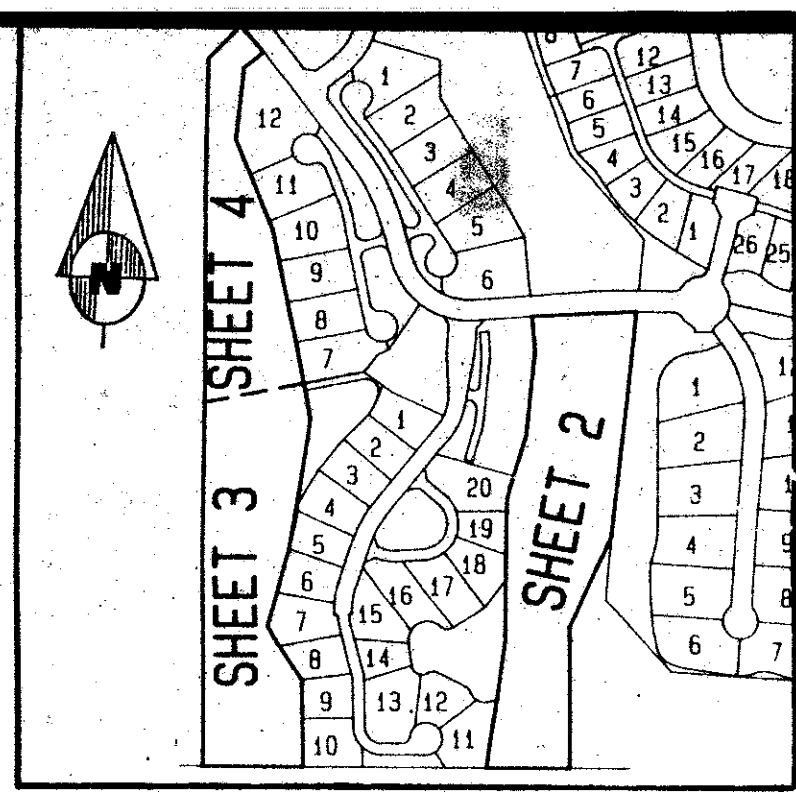


# DUNES PLAT NO. 1 HOLES 14 AND 16

## OF PALM BEACH POLO AND COUNTRY CLUB WELLINGTON - P. U. D.

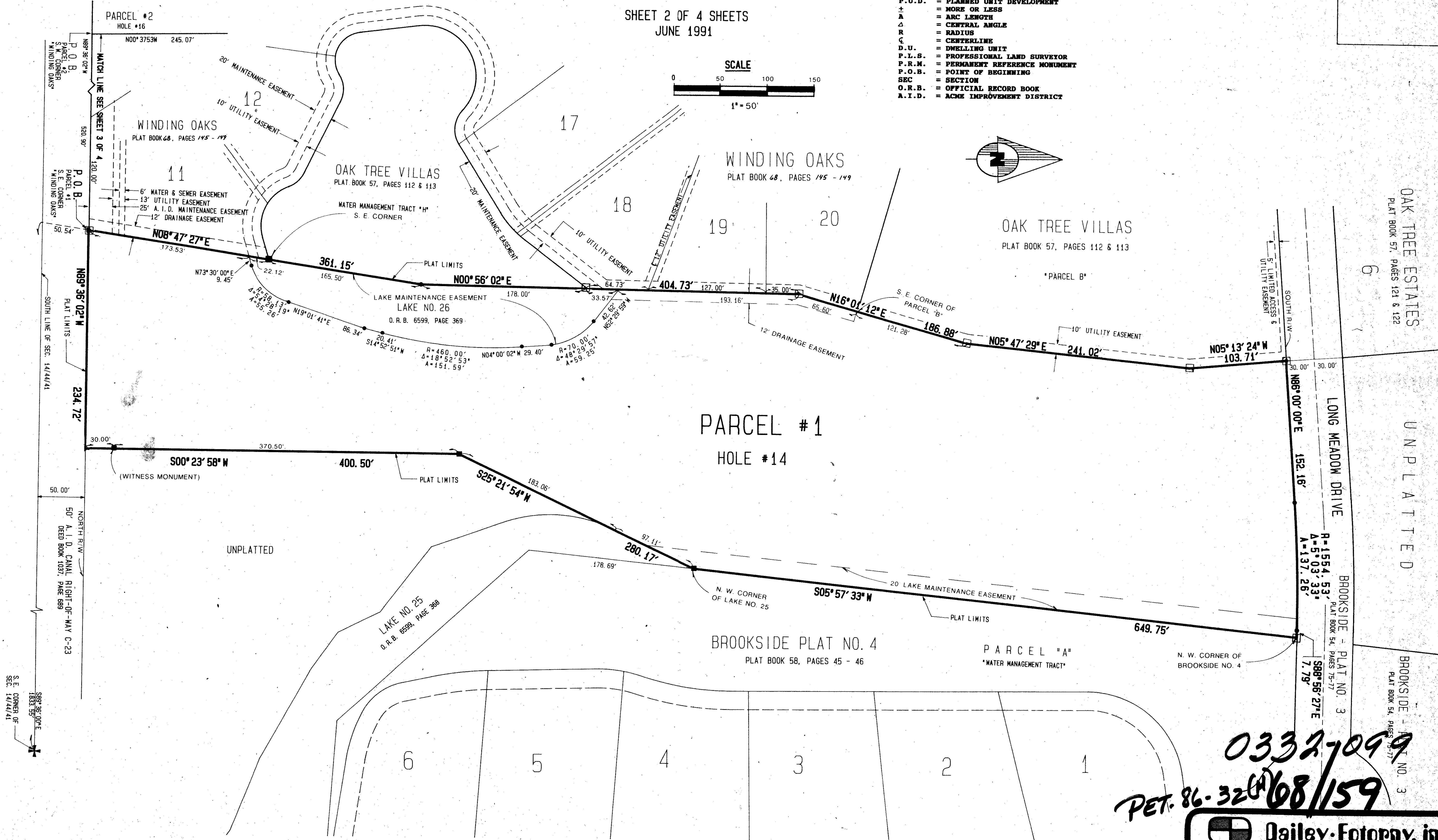
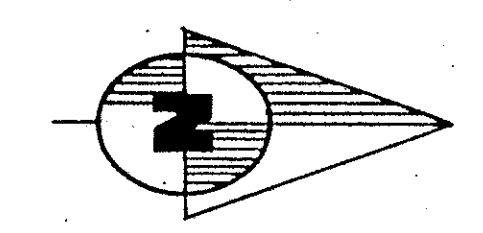
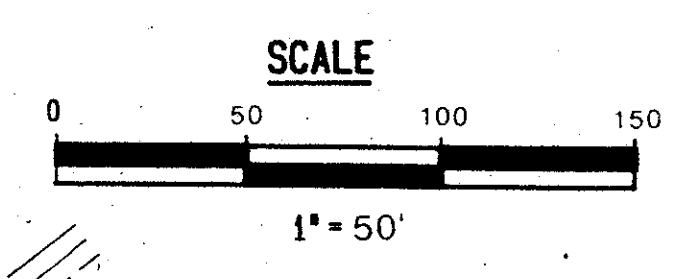
LYING IN PART OF SECTION 14  
TOWNSHIP 44 SOUTH, RANGE 41 EAST  
PALM BEACH COUNTY, FLORIDA

SHEET 2 OF 4 SHEETS  
JUNE 1991



INDEX MAP

- LEGEND**
- P.B.C. = PALM BEACH COUNTY
  - NO. = NUMBER
  - P.U.D. = PLANNED UNIT DEVELOPMENT
  - ± = MORE OR LESS
  - A = ARC LENGTH
  - Δ = CENTRAL ANGLE
  - R = RADIUS
  - C = CENTERLINE
  - D.U. = DWELLING UNIT
  - P.L.S. = PROFESSIONAL LAND SURVEYOR
  - P.R.M. = PERMANENT REFERENCE MONUMENT
  - P.O.B. = POINT OF BEGINNING
  - SEC = SECTION
  - O.R.B. = OFFICIAL RECORD BOOK
  - A.I.D. = ACME IMPROVEMENT DISTRICT



TAZ # 700

BOOK 68 PAGE 159  
 FLOOD ZONE AO-1 FLOOD MAP # 100B  
 QUAD # 62 ZONING  
 ZIP CODE 33414  
 P.U.D. NAME Wellington, P.U.D.

0332-099  
 PET. 86-32608/159

### DUNES PLAT No. 1, HOLES 14 & 16

**Dailey-Fotony, inc.**  
 land surveyors, planners, engineers  
 5050 10th Avenue North, Suite B - Lake Worth, Florida 33463-2602  
 Phone 407-965-8787