

KEY MAP

- LEGEND**
- P.B.C. = PALM BEACH COUNTY
 - NO. = NUMBER
 - P.U.D. = PLANNED UNIT DEVELOPMENT
 - + = MORE OR LESS
 - A = ARC LENGTH
 - Δ = CENTRAL ANGLE
 - R = RADIUS
 - C = CENTERLINE
 - D.U. = DWELLING UNIT
 - P.L.S. = PROFESSIONAL LAND SURVEYOR
 - P.R.M. = PERMANENT REFERENCE MONUMENT
 - P.O.B. = POINT OF BEGINNING
 - SEC = SECTION
 - O.R.B. = OFFICIAL RECORD BOOK
 - A.I.D. = ACME IMPROVEMENT DISTRICT

WINDING OAKS

OF PALM BEACH POLO AND COUNTRY CLUB

WELLINGTON - P. U. D.

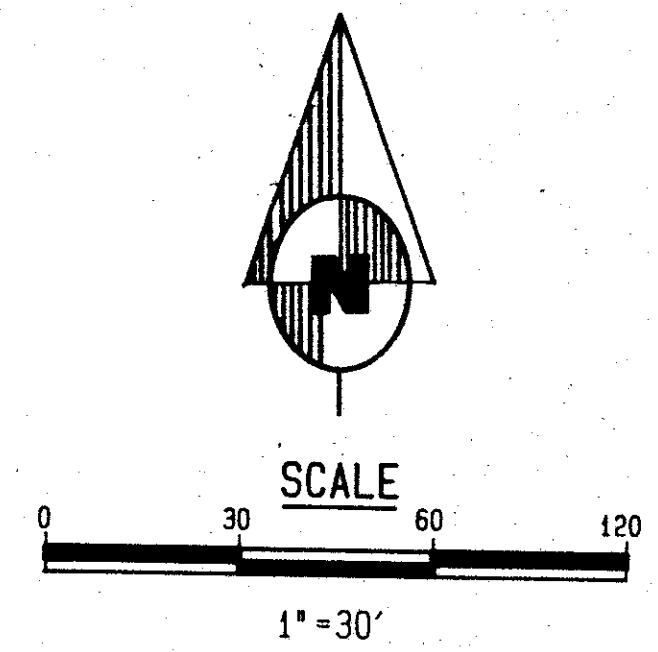
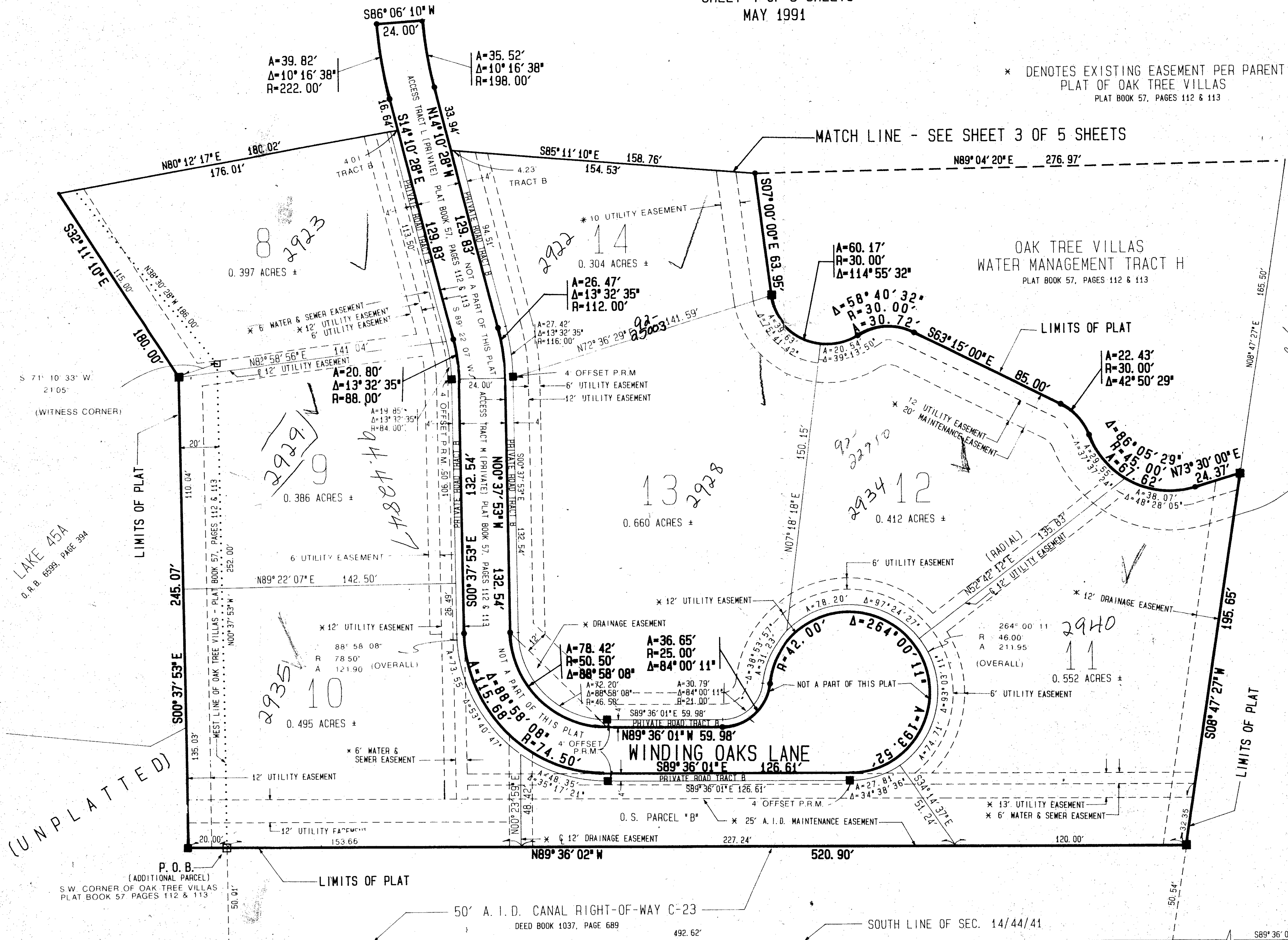
BEING A REPLAT OF PARCELS C, D, E, F AND J OF OAK TREE VILLAS OF PALM BEACH POLO AND COUNTRY CLUB, WELLINGTON P.U.D. AS RECORDED IN PLAT BOOK 57, PAGES 112 AND 113 OF THE PUBLIC RECORDS OF PALM BEACH COUNTY FLORIDA AND OTHER LANDS.

LYING IN PART OF SECTION 14
TOWNSHIP 44 SOUTH, RANGE 41 EAST
PALM BEACH COUNTY, FLORIDA

SHEET 4 OF 5 SHEETS
MAY 1991

* DENOTES EXISTING EASEMENT PER PARENT
PLAT OF OAK TREE VILLAS
PLAT BOOK 57, PAGES 112 & 113

MATCH LINE - SEE SHEET 3 OF 5 SHEETS



TAZ #730

SUBDIVISION - Winding Oaks
BOOK 68 PAGE 148
FLOOD ZONE A-1
QUAD 42
SE
PUD NAME Wellington
ZIP CODE 33411

UNPLATTED

PET. 86-32H
COLLECT

0332-098

108/148

WINDING OAKS

Dailey-Fotony, inc.
land surveyors, planners, engineers
9050 10th Avenue North, Suite B - Lake Worth, Florida 33463 2602
Phone 407/965-8787