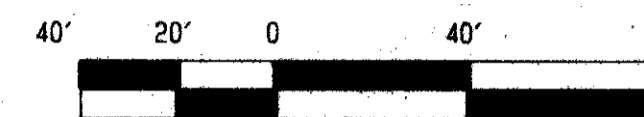
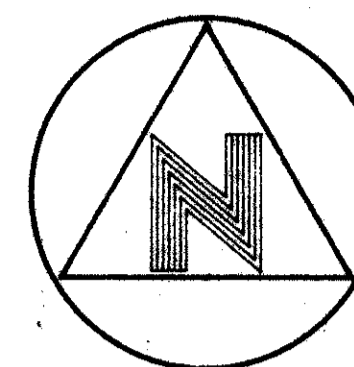


- Hidden Lakes At Northtree -

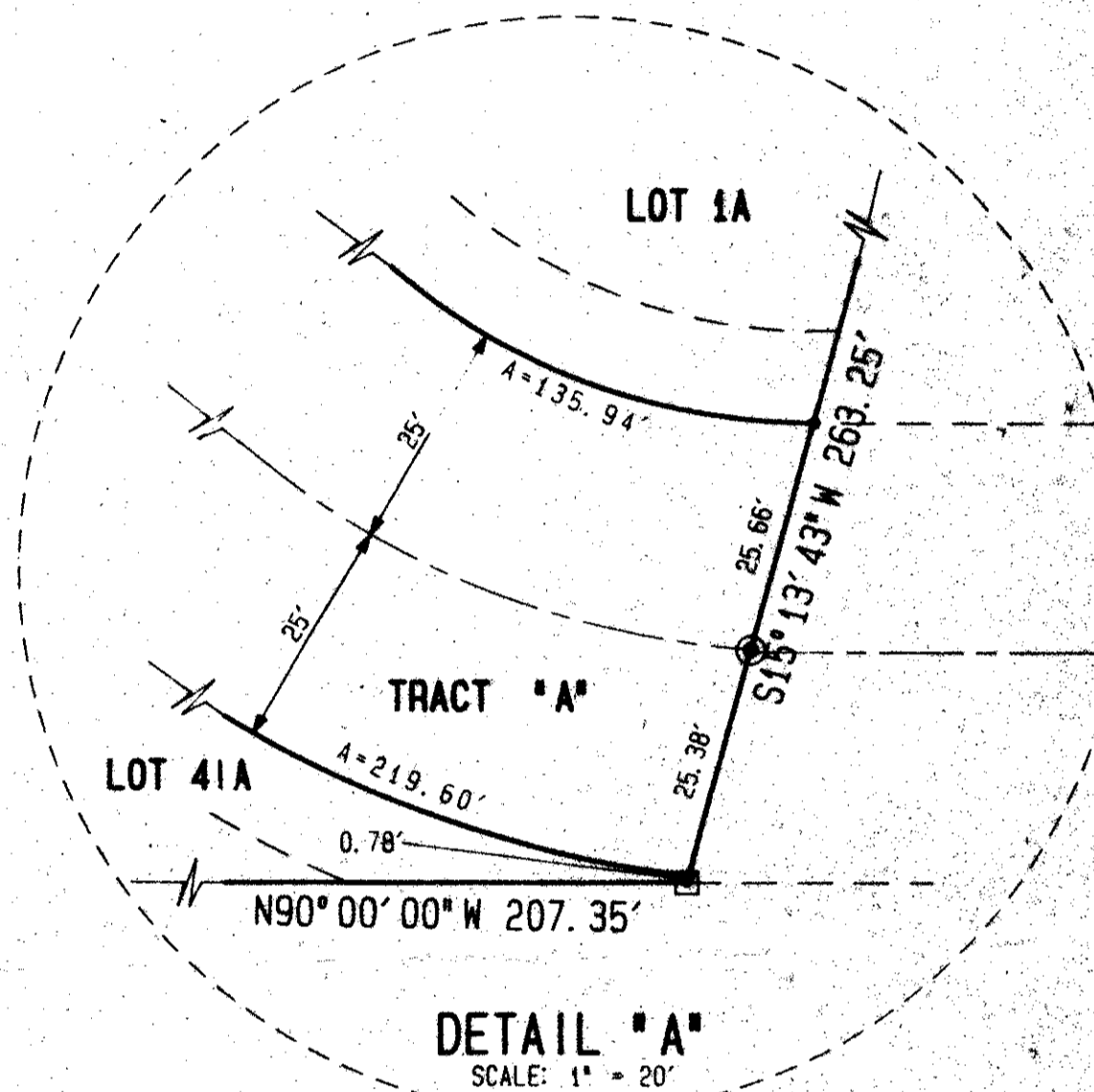
80

Lying In Sections 9, 10 And 16, Township 45 South, Range 42 East, Palm Beach County, Florida

490-004



GRAPHIC SCALE IN FEET



- Legend:**
- 1. Denotes A Set #2424 Permanent Reference Monument
 - 2. Denotes A Set #2424 Permanent Control Point
 - 3. Denotes A Zero Lot Line.
 - 4. C/L Denotes Centerline
 - 5. O.E. Denotes A 150 Foot Overhang Easement.
 - 6. O.R.B. Denotes Official Records Book.
 - 7. P.B. Denotes Plat Book
 - 8. PG. Denotes Page
 - 9. Pp. Denotes Page Through Page.
 - 10. Sq. Ft. Denotes Square Feet
 - 11. Δ Denotes Central Angle
 - 12. R Denotes Radius
 - 13. A Denotes Arc Length

Notes:

1. Lines which intersect curves are radial unless otherwise noted.
2. In those instances where utility/drainage structures are constructed in conflict with the Platted Permanent Control Points (P.C.P.) position, straddlers monumented as Permanent Control Points will be set to reference the Platted Permanent Control Point positions.
3. All underlying Palm Beach Farms Company platted rights-of-way, lying within Blocks 40 & 41, were abandoned by Resolution Number R78-771, and recorded in Official Records Book 2891, Page 323, Public Records, Palm Beach County, Florida.
4. This instrument was prepared by Wm. R. Van Campen, R.L.S., and Gene D. Bowling, Jr., in and for the offices of Bench Mark Land Surveying & Mapping, Inc., 4152 West Blue Heron Boulevard, Suite 121, Riviera Beach, Florida 33404, Telephone (407) 848-2102.

Note:
part of Pds 3
Northtree P.U.D.

(SEE SHEET 4 of 8)
MATCH LINE

(SEE SHEET 4 of 8)
MATCH LINE

MATCH LINE
(SEE SHEET 8 of 8)

LAKE CHARLESTON PLAT No. 3
(P.B. 62, Pp. 55 - 66)

HAGEN RANCH ROAD
(ORR 5897, Pp. 1776)

N00°44'33"E 1284.03'

MOULTRIE DRIVE
(P.B. 62, Pp. 55 - 66)

LAKE CHARLESTON PLAT No. 3
(P.B. 62, Pp. 55 - 66)

N00°44'33"E 1284.03'

C/L 12' UTILITY EASEMENT

C/L 12' DRAINAGE EASEMENT

NON RADIAL

NON RADIAL

NON RADIAL

NON RADIAL

NON RADIAL

NON RADIAL

NON RADIAL

NON RADIAL

TRACT 'A'

LAKE ISLAND DRIVE

TRACT 'L'

LAKE ISLAND DRIVE

TRACT 'L'

TRACT 'L'

TRACT 'L'

TRACT 'L'

TRACT 'L'

TRACT 'L'

POINT OF BEGINNING

SOUTHWEST CORNER OF NORTHTREE

(P.B. 56, Pp. 186 - 192)

Found #2424 Permanent Reference Monument

Found #2424 Permanent Reference Monument

Found #2424 Permanent Reference Monument

Found #2424 Permanent Reference Monument

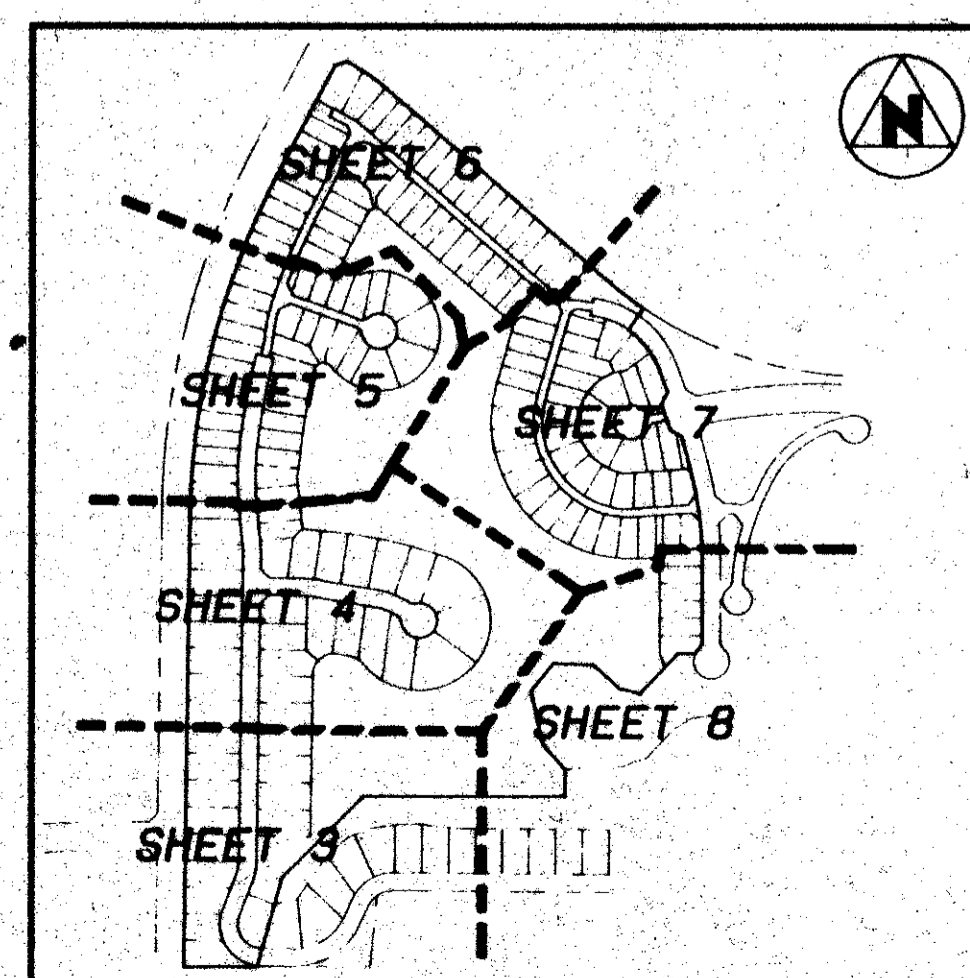
Found #2424 Permanent Reference Monument

Found #2424 Permanent Reference Monument

TRACT 'L'
WATER MANAGEMENT TRACT AND DRAINAGE EASEMENT
TO BE MAINTAINED BY NORTHTREE COMMUNITY ASSOCIATION, INC.
WITHOUT RECOURSE TO PALM BEACH COUNTY

Boundary Line Of "Northtree"
(Plat Book 56, Pages 186 Through 192)

NORTHTREE
(P.B. 56, Pp. 186 - 192)



KEY MAP
(NOT TO SCALE)

MATCH LINE
(SEE SHEET 8 of 8)

N90°00'00"W 207.35'

LAKE NORTH DRAINAGE DISTRICT LATERAL CANAL L-20
(ORR 5138, Pp. 888)

ABERDEEN PLAT No. 2
(P.B. 55, Pp. 11 - 16)

BOOK 68
FLOOD ZONE 185A
QUAD 34, 49
SE 20-25
ZIP CODE 33437
P.D. HARRIS
BENCH MARK

68/80

BENCH MARK
LAND SURVEYING & MAPPING, INC.
RIVIERA BEACH, FLORIDA (407) 848-2102
WEST PALM BEACH, FLORIDA (407) 793-9234

Record Plat
Hidden Lakes At Northtree

SCALE: 1" = 40' (LAD FILE: WTR-43 N.D. #: P6100) 3 of 8