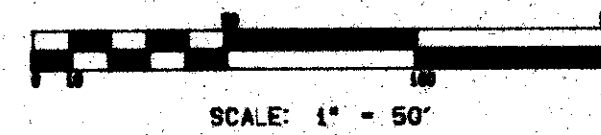


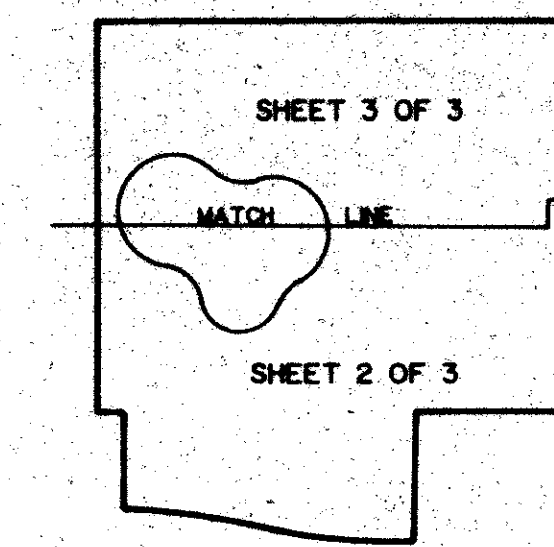
# PLAT OF JEWISH COMMUNITY CAMPUS

A PORTION OF THE DORFMAN, P. U. D.  
A PARCEL OF LAND IN SECTION 13, TOWNSHIP 43 SOUTH, RANGE 42 EAST,  
PALM BEACH COUNTY, FLORIDA

SHEET 3 OF 3



AUGUST, 1991



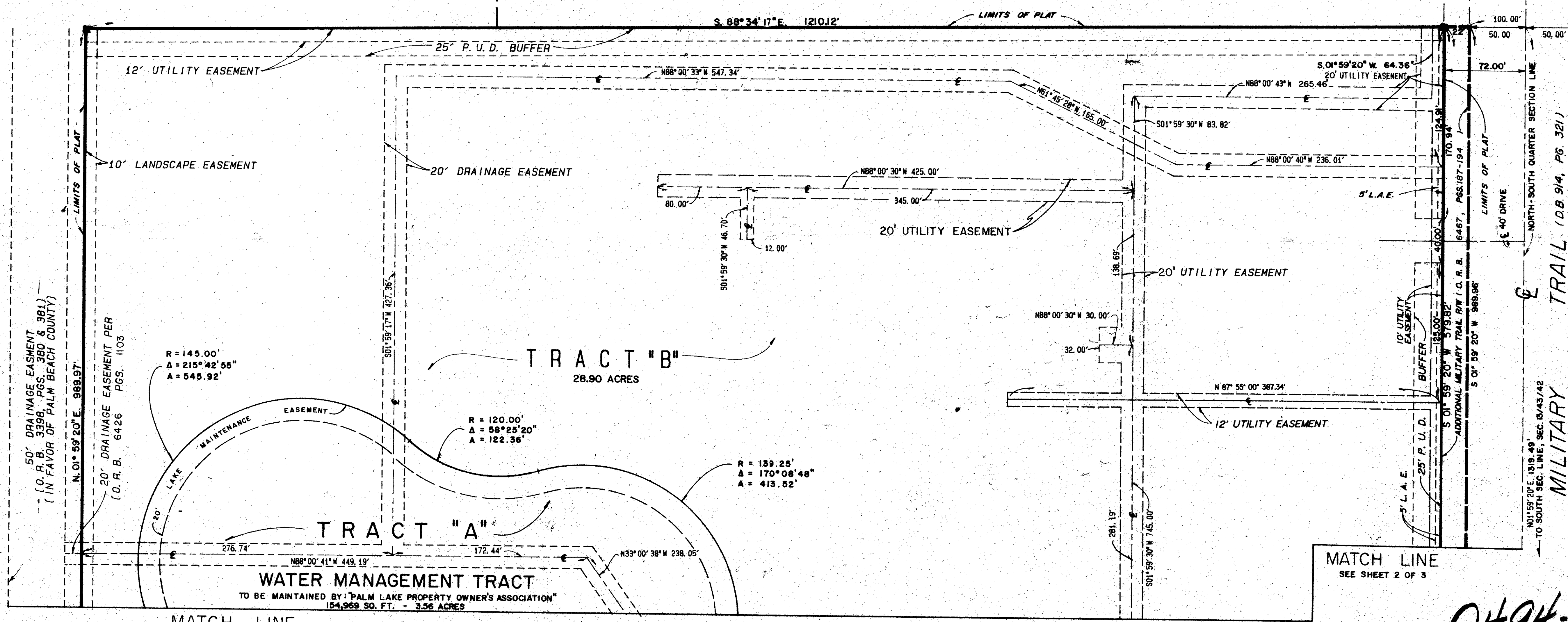
KEY MAP  
NO SCALE



STATE OF FLORIDA  
COUNTY OF PALM BEACH  
This Plat was filed for record at  
M. this day of 1991  
and duly recorded in Plat Book No.  
on Page  
John B. Dunbar, Clerk of the Circuit Court  
By \_\_\_\_\_ D.C.

PINERIDGE AT HAVERHILL  
P. B. 43, PAGES 11 & 12

NOT PLATTED



NOT PLATTED

NOT PLATTED

SUBDIVISION - JEWISH COMMUNITY CAMPUS  
BOOK 68 PAGE 77  
FLOOD ZONE B FLOOD MAP # 1552  
QUAD # 30 ZONING  
SE ZIP CODE 33409  
DUP NAME  
12/14/91

TAZ 609

MATCH LINE  
SEE SHEET 2 OF 3

0494-002  
PET. 85-171  
ALLOC. # 0001 COLLECT  
68/77

Landmark Surveying & Mapping Inc.  
1850 FOREST HILL BOULEVARD  
PH. (305)433-5405 SUITE 200 W.P.B. FLORIDA

**JEWISH COMMUNITY CAMPUS**

0495-004