

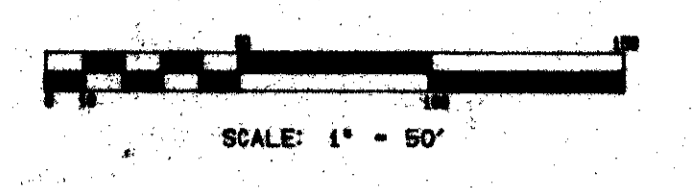
PLAT OF JEWISH COMMUNITY CAMPUS

A PORTION OF THE DORFMAN, P. U. D.
A PARCEL OF LAND IN SECTION 13, TOWNSHIP 43 SOUTH, RANGE 42 EAST,
PALM BEACH COUNTY, FLORIDA

AUGUST, 1991

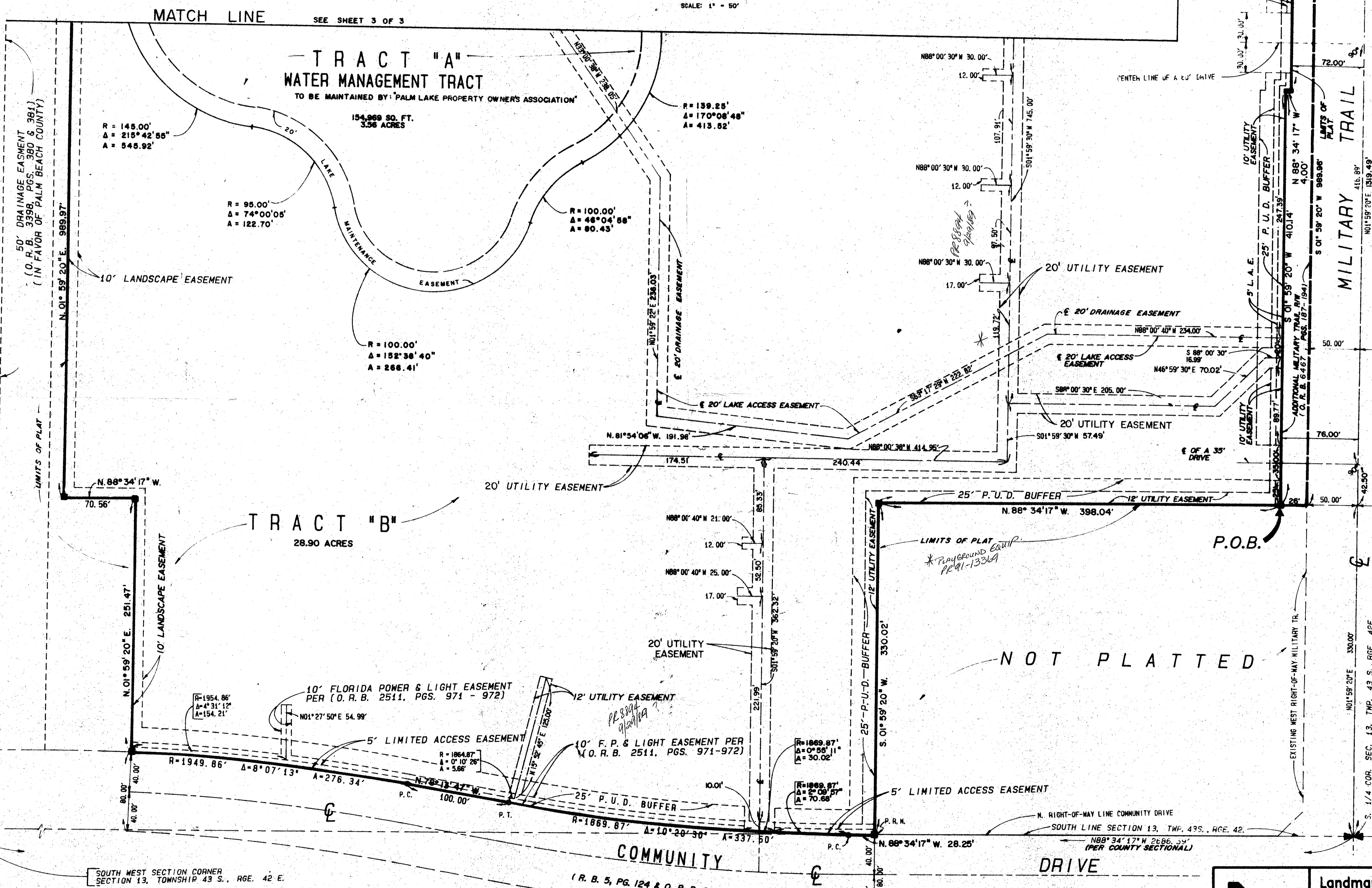
KEY MAP
NO SCALE

SHEET 2 OF 3



SEE SHEET 3 OF 3
MATCH LINE

STATE OF FLORIDA
COUNTY OF PALM BEACH
This Plat was filed for record at
...
and duly recorded in Plat Book No. ...
on Page ...
John B. Dunbar, Clerk of the Circuit Court
By ... D.C.



NOT PLATTED

NOT PLATTED

0494-002
DET. 85-171
ALLOC. #0001
COLLECT

68/76

BOOK 68
PLAT 106
ZONING
CHECK # 730
ZIP CODE 33409
SEE
FOR MARKS
12/13/42
TAZ 169

SOUTH WEST SECTION CORNER
SECTION 13, TOWNSHIP 43 S., RGE. 42 E.

COMMUNITY DRIVE
(R. B. 5, PG. 124 & O. R. B. 2535, PG. 1518)

CROSTOWN PLAZA
P. B. 55, PG. 118

Landmark Surveying & Mapping Inc.
1850 FOREST HILL BOULEVARD
PH. (305)433-5405 SUITE 200 W.P.B. FLORIDA

JEWISH COMMUNITY CAMPUS

0494-002