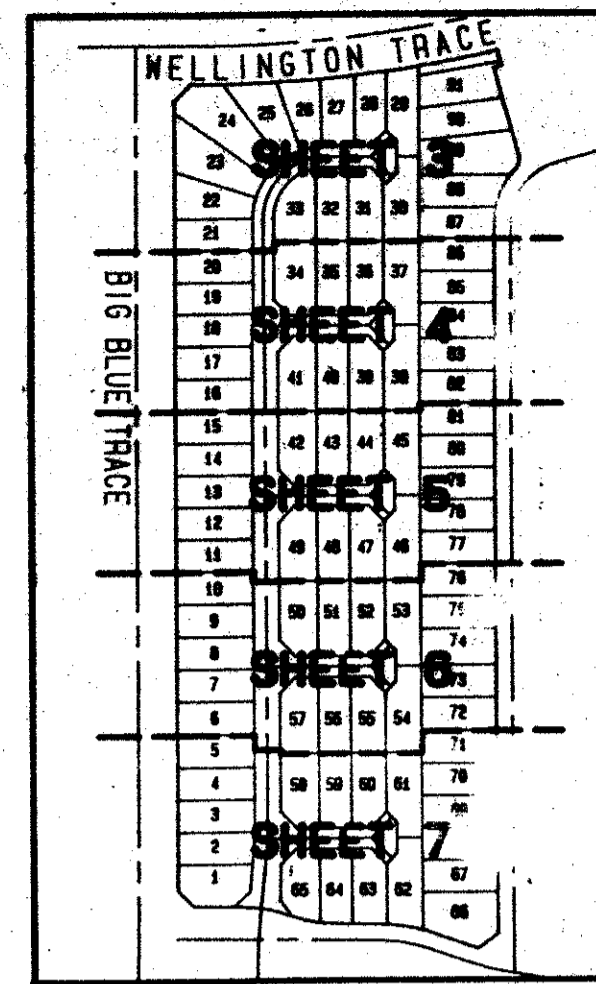


# EMERALD FOREST PLAT NO. 2 OF WELLINGTON - P. U. D.

BEING A REPLAT OF PART OF EMERALD FOREST OF WELLINGTON - P. U. D. AS RECORDED IN PLAT BOOK 56, PAGES 177-181, INCLUSIVE, PUBLIC RECORDS OF PALM BEACH COUNTY, FLORIDA AND OTHER LANDS.

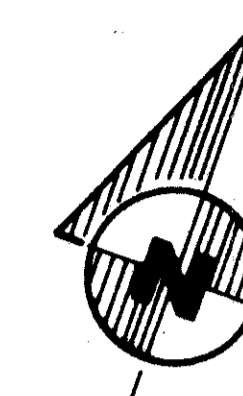
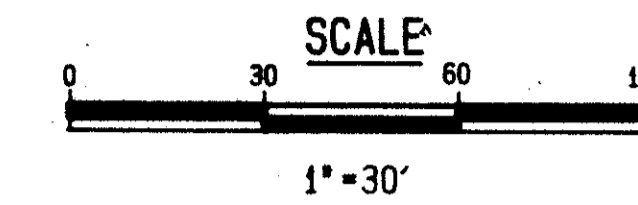
LYING IN PART OF SECTIONS 4 AND 9 TOWNSHIP 44 SOUTH, RANGE 41 EAST PALM BEACH COUNTY, FLORIDA

SHEET 5 OF 7 SHEETS  
JANUARY 1991



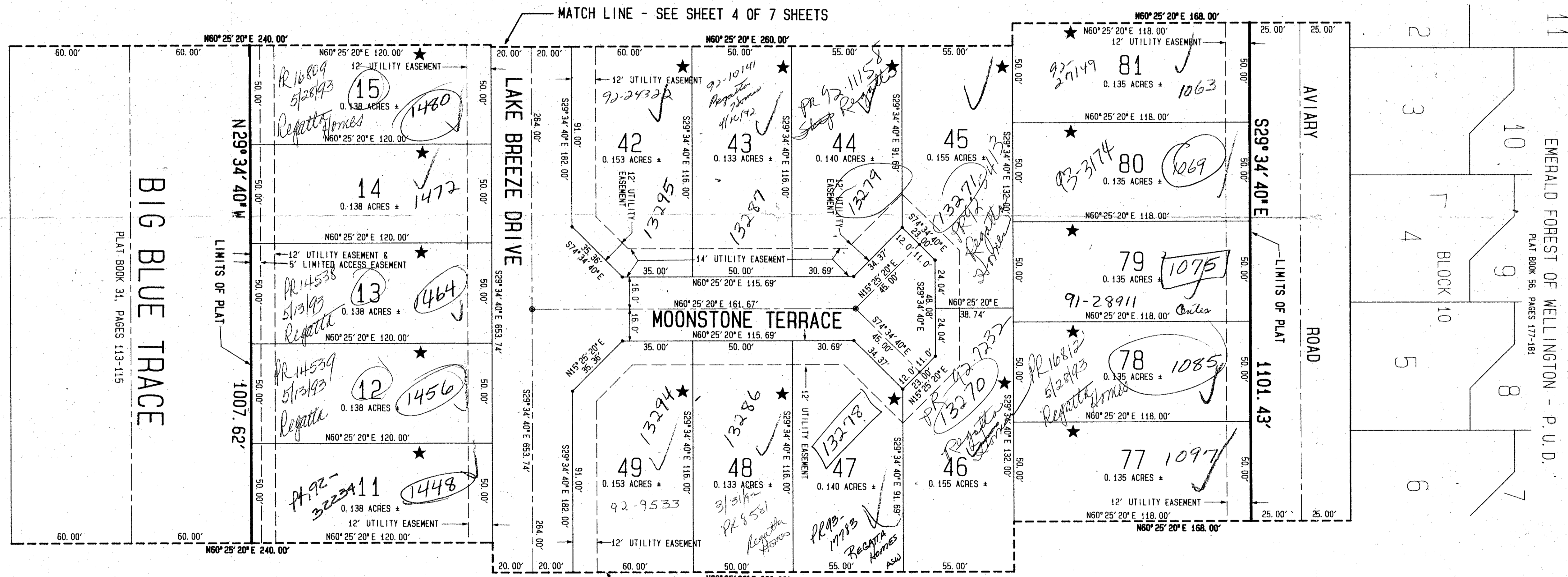
INDEX MAP

- LEGEND**
- BLK. = BLOCK
  - R/W = RIGHT-OF-WAY
  - P.C. = POINT OF CURVATURE
  - P.B.C. = PALM BEACH COUNTY
  - NO. = NUMBER
  - P.U.D. = PLANNED UNIT DEVELOPMENT
  - + = MORE OR LESS
  - A = ARC LENGTH
  - Δ = CENTRAL ANGLE
  - R = RADIUS
  - CL = CENTERLINE
  - D.U. = DWELLING UNIT
  - P.L.S. = PROFESSIONAL LAND SURVEYOR
  - P.C.P. = PERMANENT CONTROL POINT
  - P.R.M. = PERMANENT REFERENCE MONUMENT
  - P.O.B. = POINT OF BEGINNING
  - ★ = ZERO LOT LINE



GREENVIEW SHORES NO. 1 OF WELLINGTON - P. U. D.  
PLAT BOOK 31, PAGES 113-115

BIG BLUE TRACE  
PLAT BOOK 31, PAGES 113-115



MATCH LINE - SEE SHEET 4 OF 7 SHEETS

MATCH LINE - SEE SHEET 6 OF 7 SHEETS

EXISTING EASEMENTS PER THE PARENT PLAT OF EMERALD FOREST OF WELLINGTON - P. U. D. HAVE BEEN ABANDONED IN OFFICIAL RECORD BOOK 6712, PAGES 1961 THROUGH 1964, INCLUSIVE, OF THE PUBLIC RECORDS OF PALM BEACH COUNTY, FLORIDA.

TAZ 727

BOOK 68  
PAGE 51  
FLOOD ZONE B  
QUAD 77  
SE  
PLAT NAME  
49777741  
WELLINGTON  
ZIP CODE 33414

68/51

0332-096

EMERALD FOREST #2

**Dailey-Fotony, inc.**  
land surveyors, planners, engineers  
5050 10th Avenue North, Suite B - Lake Worth, Florida 33463-2602  
Phone 407-965-8787