

# BREAKERS WEST PLAT NO. 18

"PART OF A PLANNED UNIT DEVELOPMENT"

SITUATE IN SECTIONS 29 AND 30, TOWNSHIP 43 SOUTH, RANGE 42 EAST, PALM BEACH COUNTY, FLORIDA  
 BEING A REPLAT OF A PORTION OF TRACTS 1, 4, AND 5, BLOCK 1, AND TRACTS 2, 3, 4, AND 10,  
 BLOCK 2, OF "PALM BEACH FARMS COMPANY PLAT NO. 3" (P.B. 2, PGS. 45-54) AND A PORTION OF  
 LOTS 4, 5, 6, AND 7, BLOCK 1, "PALM BEACH FARMS COMPANY LAT 0. 9" (P.B. 5, PG. 58)

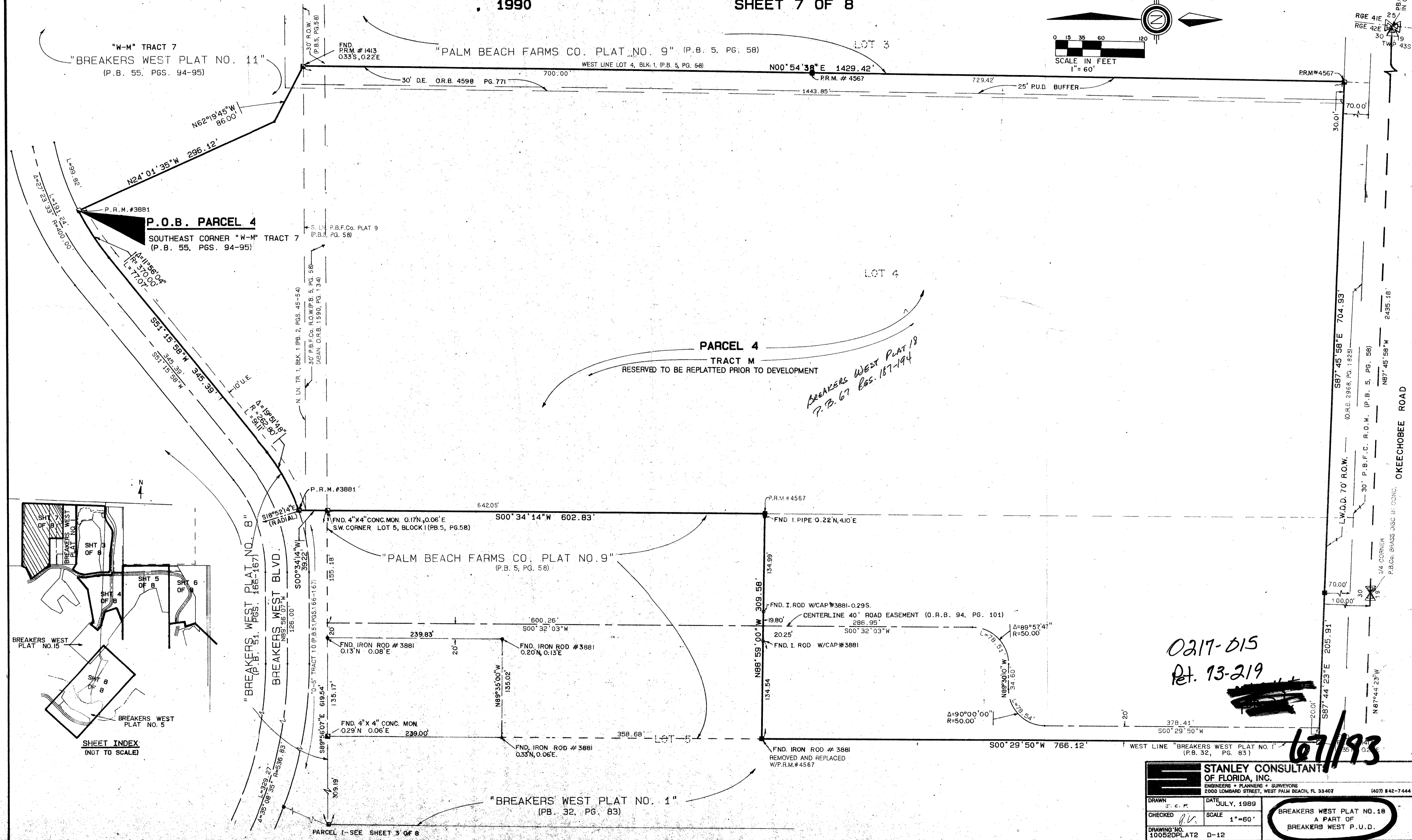
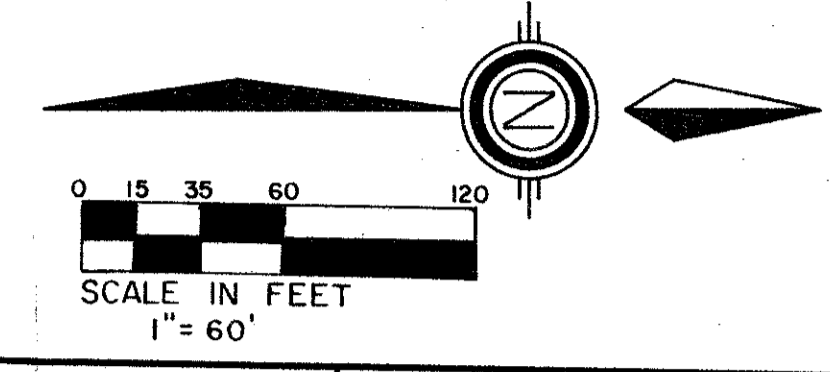
1990

SHEET 7 OF 8

0217-015

# 193

STATE OF FLORIDA  
 COUNTY OF PALM BEACH  
 THIS PLAT WAS FILED FOR  
 RECORD \_\_\_\_\_ DAY OF \_\_\_\_\_  
 AD, 19 \_\_\_\_\_ AND DULY RECORDED  
 IN PLAT BOOK \_\_\_\_\_ ON PAGE \_\_\_\_\_



TAZ 817

*PARCEL 4  
 TRACT M  
 RESERVED TO BE REPLATED PRIOR TO DEVELOPMENT  
 BREAKERS WEST PLAT 18  
 P.B. 67 EGS. 187-194*

0217-015  
 Pt. 13-219

6/7/193

SUBMISSION Breakers West Plat 18  
 PAGE 193  
 PLANNED UNIT DEVELOPMENT  
 PLAT NO. 18  
 SHEET # 40  
 DATE 7/13/93  
 PLO NAME STANLEY CONSULTANTS OF FLORIDA, INC.  
 2000 LOMBARD STREET, WEST PALM BEACH, FL 33407  
 (407) 842-7444

|   |                    |
|---|--------------------|
| <b>STANLEY CONSULTANTS OF FLORIDA, INC.</b>   |                    |
| ENGINEERS • PLANNERS • SURVEYORS<br>2000 LOMBARD STREET, WEST PALM BEACH, FL 33407 (407) 842-7444 |                    |
| DRAWN<br>T.C.F.   | DATE<br>JULY, 1993 |
| CHECKED<br>R.V.   | SCALE<br>1"=60'    |
| DRAWING NO.<br>10052PLAT2   | D-12               |