

BREAKERS WEST PLAT NO. 18

"PART OF A PLANNED UNIT DEVELOPMENT"

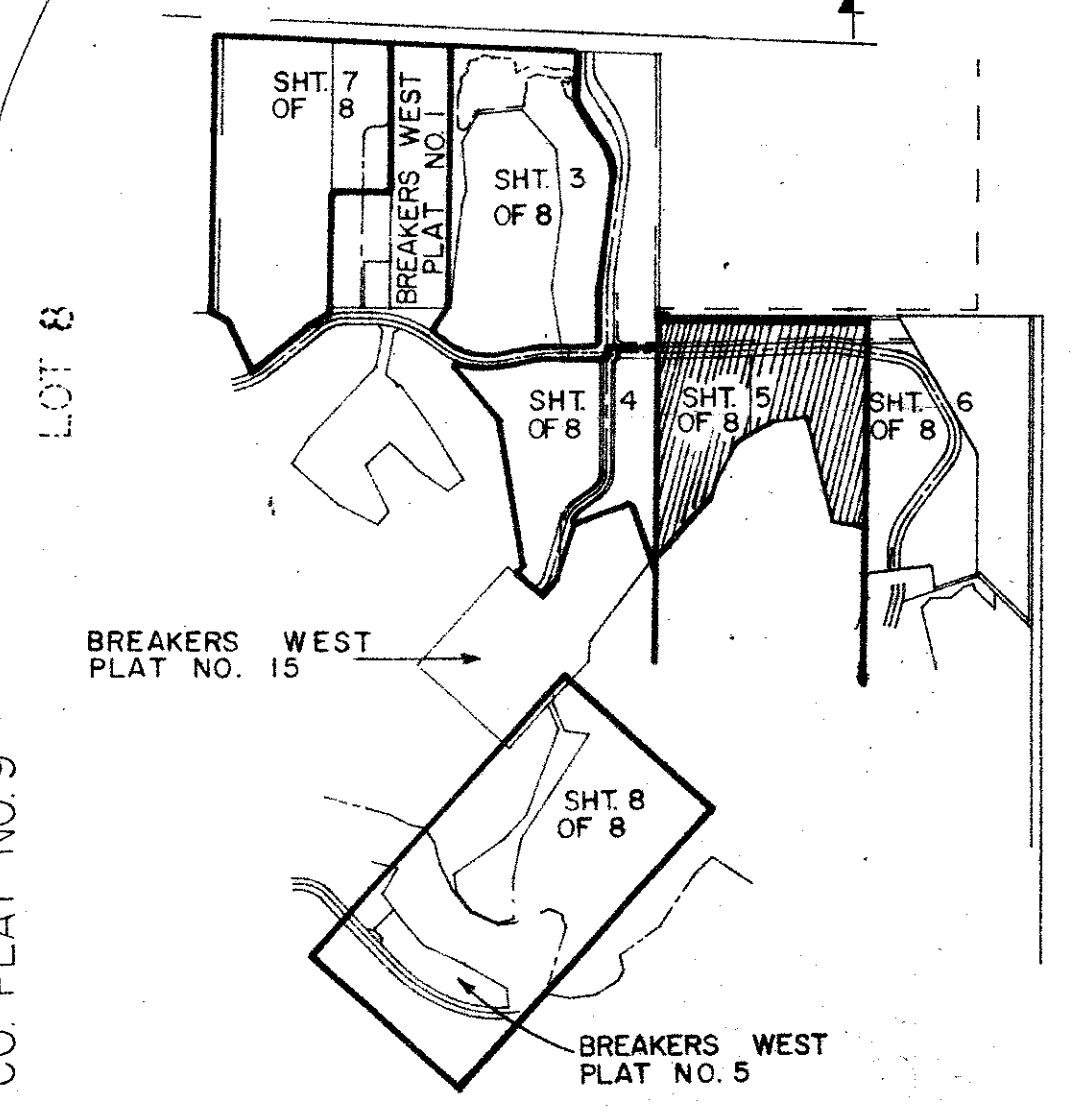
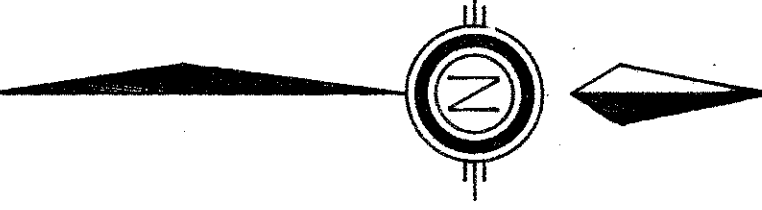
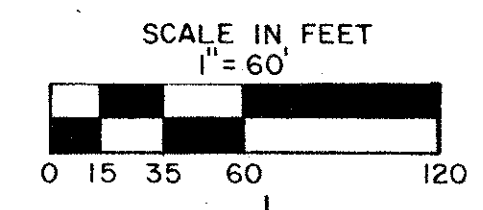
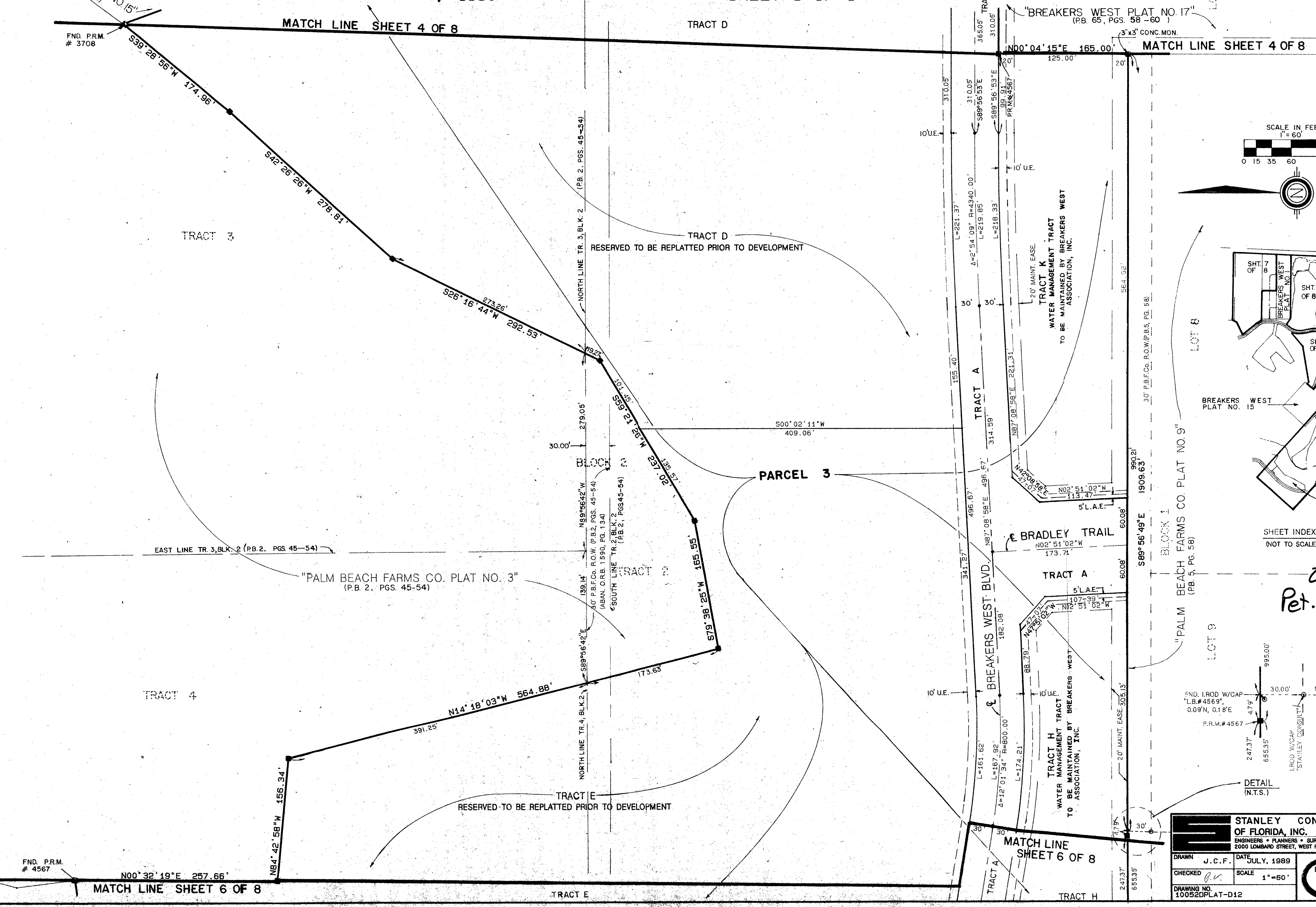
SITUATE IN SECTIONS 29 AND 30, TOWNSHIP 43 SOUTH, RANGE 42 EAST, PALM BEACH COUNTY, FLORIDA
 BEING A REPLAT OF A PORTION OF TRACTS 1, 4, AND 5, BLOCK 1, AND TRACTS 2, 3, 4, AND 10,
 BLOCK 2, OF "PALM BEACH FARMS COMPANY PLAT NO. 3" (P.B. 2, PGS. 45-54) AND A PORTION OF
 LOTS 4, 5, 6, AND 7, BLOCK 1, "PALM BEACH FARMS COMPANY PLAT NO. 9" (P.B. 5, PG. 58)
 1990
 SHEET 5 OF 8

0217-015

191

STATE OF FLORIDA
 COUNTY OF PALM BEACH
 THIS PLAT WAS FILED FOR
 RECORD
 THIS _____ DAY OF _____
 AD, 19 _____ AND DULY RECORDED
 IN PLAT BOOK _____ ON PAGES
 _____ AND _____
 JOHN B. DUNKLE, CLERK
 BY: _____, D.C.

CIRCUIT COURT SEAL



0217-015
 Pet. 73-219

67/191

STANLEY CONSULTANTS OF FLORIDA, INC. ENGINEERS • PLANNERS • SURVEYORS 2000 LOMBARD STREET, WEST PALM BEACH, FL 33407 (407) 842-7444	
DRAWN J. C. F.	DATE JULY, 1989
CHECKED [Signature]	SCALE 1" = 60'
DRAWING NO. 10052DPLAT-D12	
BREAKERS WEST PLAT NO. 18 A PART OF BREAKERS WEST P.U.D.	

TAZ 817

SUBDIVISION & PLANNING DEPT. 10/18
 PAGE 191
 FLOOD ZONE B
 ZONING R5
 DATE 7-21-89
 ZIP CODE 33411
 FID NAME [Signature]
 [Signature]