

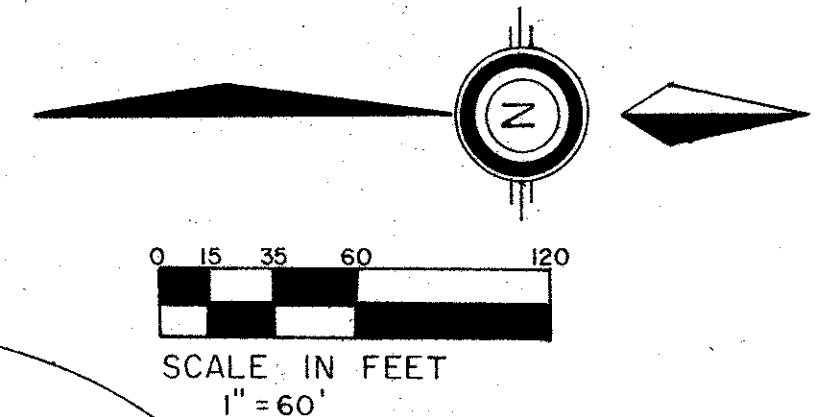
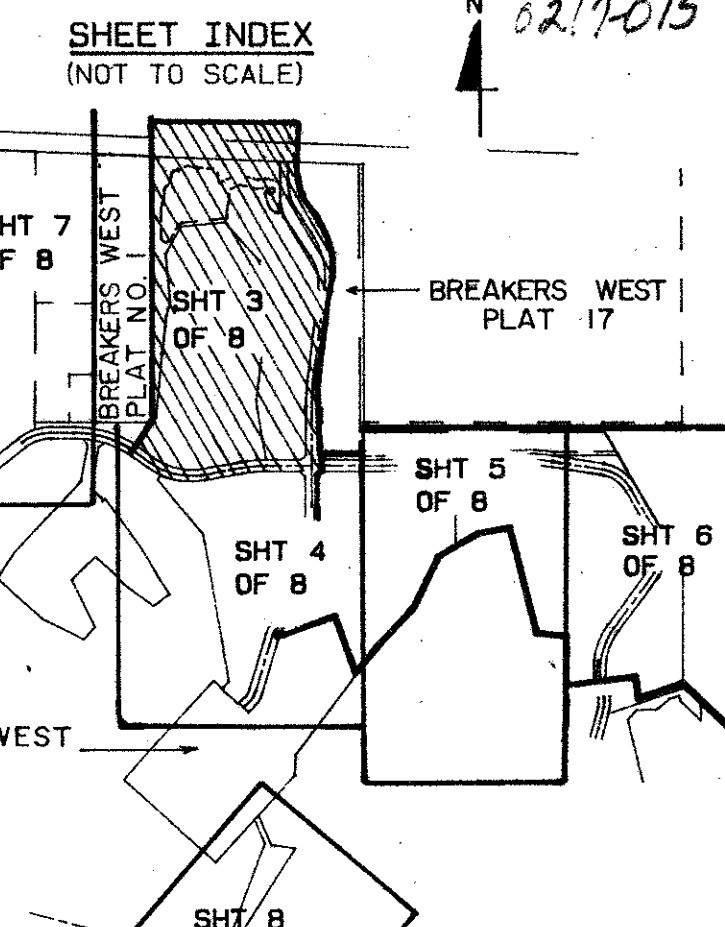
BREAKERS WEST PLAT NO. 18

"PART OF A PLANNED UNIT DEVELOPMENT"

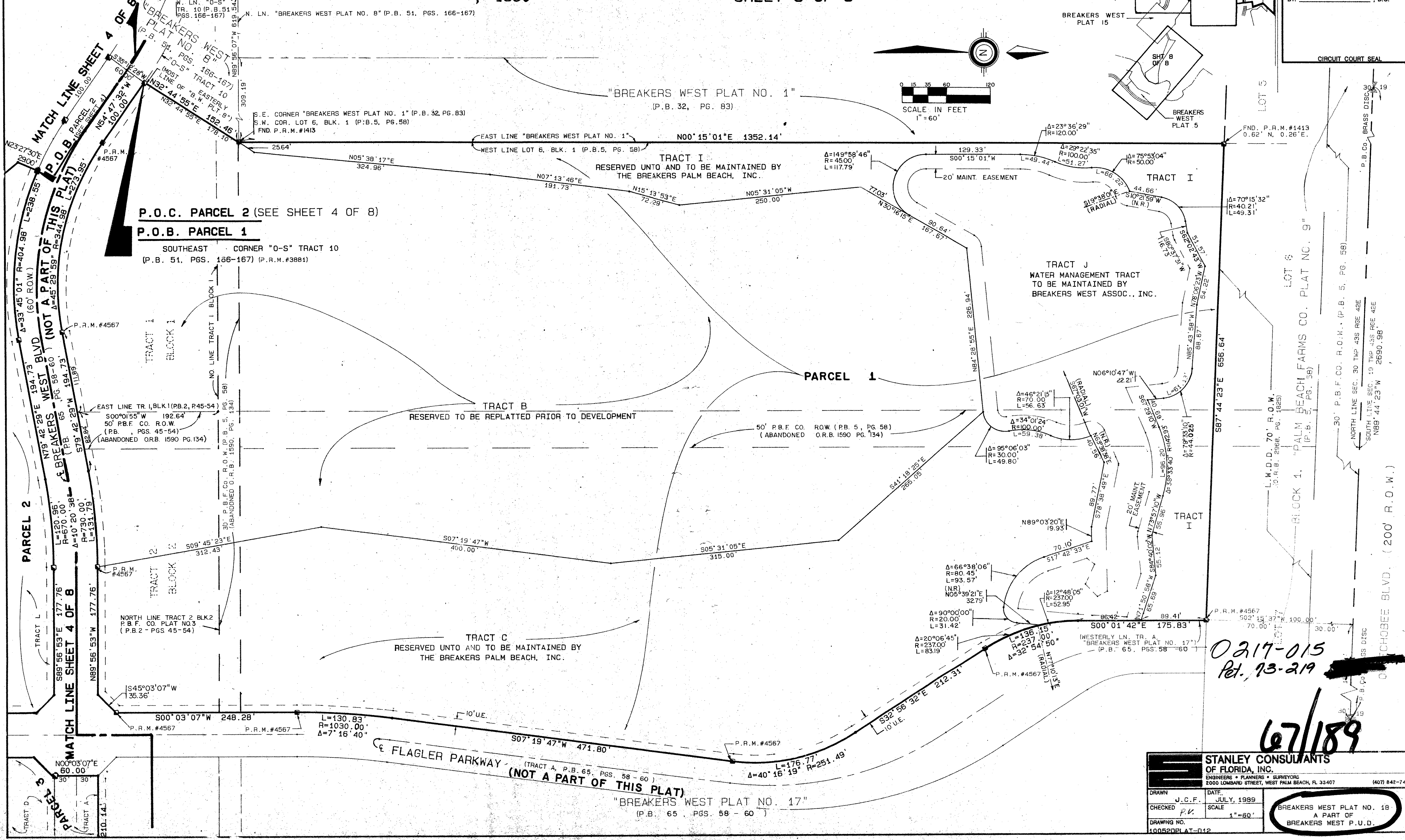
SITUATE IN SECTIONS 29 AND 30, TOWNSHIP 43 SOUTH, RANGE 42 EAST, PALM BEACH COUNTY, FLORIDA
 BEING A REPLAT OF A PORTION OF TRACTS 1, 4, AND 5, BLOCK 1, AND TRACTS 2, 3, 4, AND 10,
 BLOCK 2, OF "PALM BEACH FARMS COMPANY PLAT NO. 3" (P.B. 2, PGS. 45-54) AND A PORTION OF
 LOTS 4, 5, 6, AND 7, BLOCK 1, "PALM BEACH FARMS COMPANY PLAT NO. 9" (P.B. 5, PG. 58)
 , 1990
 SHEET 3 OF 8

189

STATE OF FLORIDA
 COUNTY OF PALM BEACH
 THIS PLAT WAS FILED FOR
 RECORD _____ DAY OF _____
 AD, 19 _____ AND DULY RECORDED
 IN PLAT BOOK _____ ON PAGES
 _____ AND _____
 JOHN B. DUNKLE, CLERK
 BY: _____, D.C.



"PALM BEACH FARMS
 CO. PLAT NO. 3"
 (P.B. 2, PGS. 45-54)



0217-015
 Plat. 13-219

67/189

| | |
|---|--------------------|
| STANLEY CONSULTANTS OF FLORIDA, INC. | |
| ENGINEERS • PLANNERS • SURVEYORS 2000 LOMBARD STREET, WEST PALM BEACH, FL 33407 (407) 842-7444 | |
| DRAWN J.C.F. | DATE JULY, 1999 |
| CHECKED P.V. | SCALE 1"=60' |
| DRAWING NO. 10052PLAT-012 | |
| BREAKERS WEST PLAT NO. 18 A PART OF BREAKERS WEST P.U.D. | |

TAG 817

0217-015
 67/189
 08-13-219
 212 006 2311
 0217-015
 67/189
 08-13-219
 212 006 2311