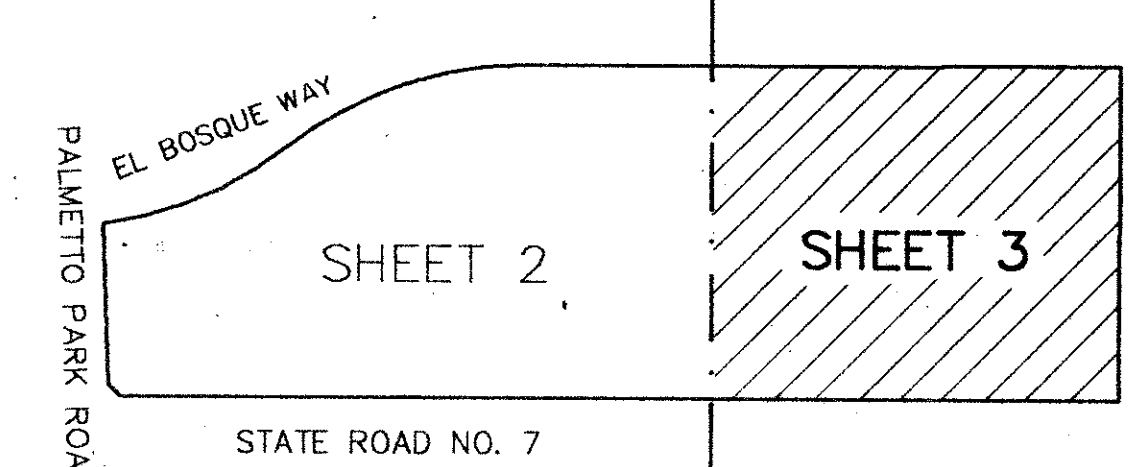
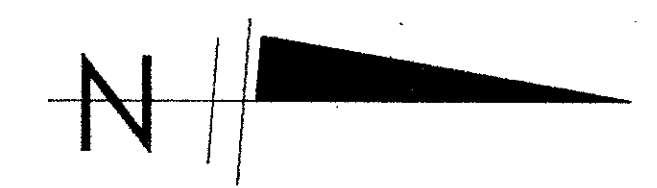
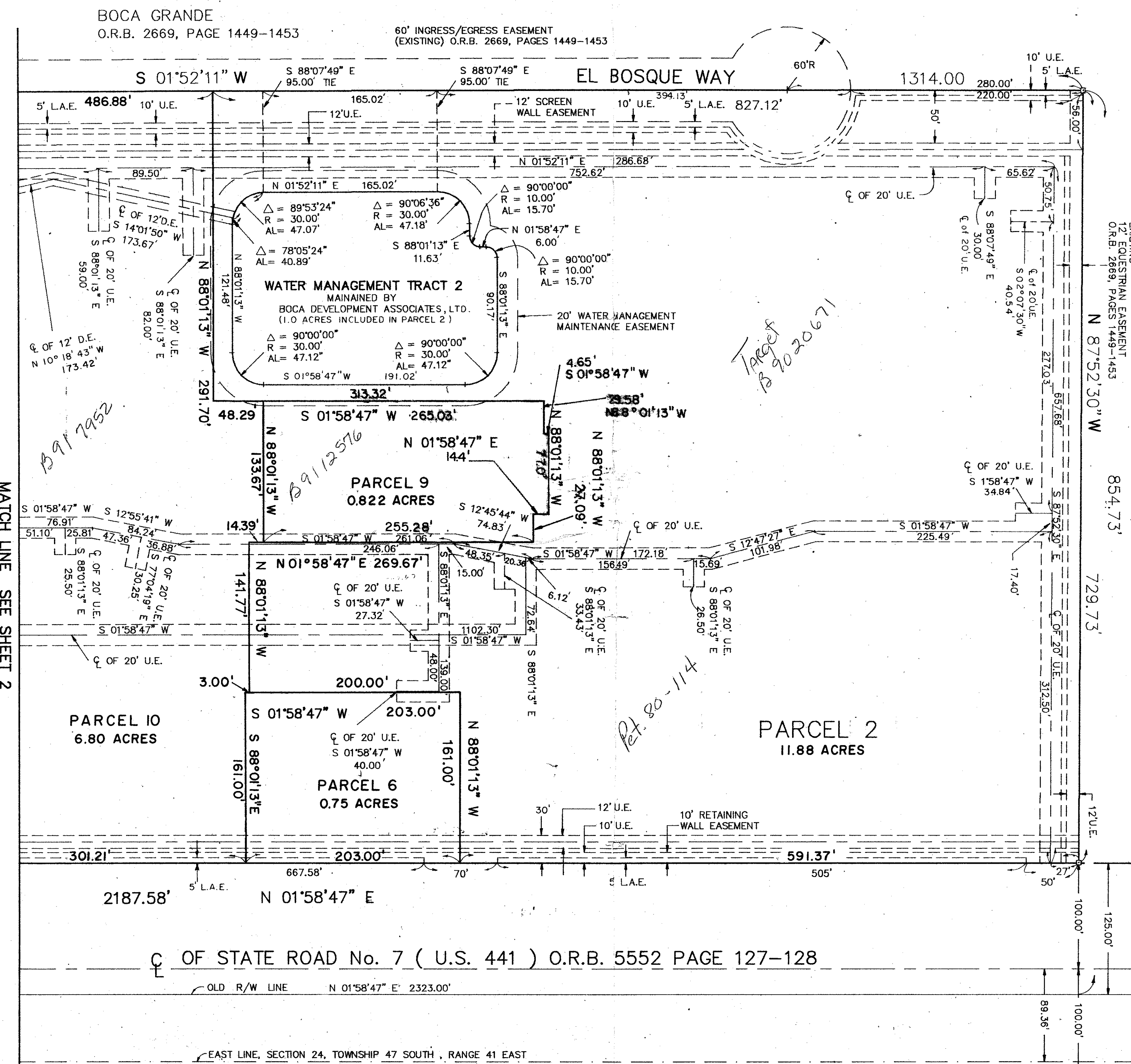


WEST BOCA SQUARE REPLAT

BEING A REPLAT OF A PORTION OF WEST BOCA SQUARE AS RECORDED IN PLAT BOOK 66, PAGE 95
THRU 97 PUBLIC RECORDS OF PALM BEACH COUNTY, FLORIDA SITUATED IN
SECTION 24, TOWNSHIP 47 SOUTH, RANGE 41 EAST, PALM BEACH COUNTY, FLORIDA
SHEET 3 OF 3
OCTOBER, 1990

0586-001

143



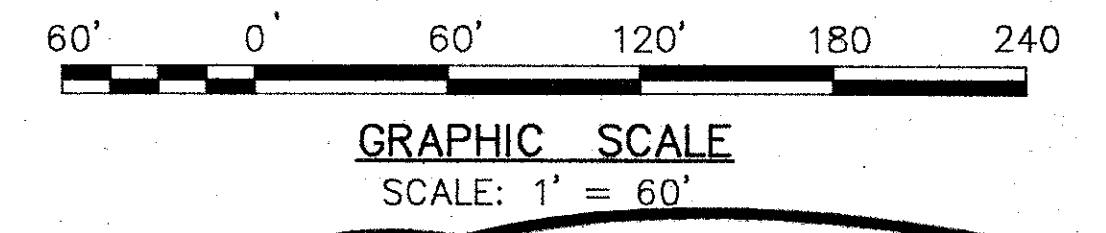
P.C.D. TABULATION

AREA OF THIS PLAT	33.9 ACRES
GROSS LEASABLE FLOOR AREA	296,453 SQ. FT.
ZONING	CG/PCD
PETITION NUMBER	80-114 (B)

LEGEND OF ABBREVIATIONS

C	= CENTER LINE	R	= RADIUS
D.E.	= DRAINAGE EASEMENT	AL	= ARC LENGTH
U.E.	= UTILITY EASEMENT	Δ	= CENTRAL ANGLE
L.A.E.	= LIMITED ACCESS EASEMENT	LCB	= LONG CHORD BEARING
O.R.B.	= OFFICIAL RECORD BOOK IN PALM BEACH COUNTY	L.W.D.D.	= LAKE WORTH DRAINAGE DISTRICT
PGS.	= PAGES	R/W	= RIGHT OF WAY
☐	= FOUND P.R.M. NO. 1632		

- NOTES**
- PERMANENT REFERENCE MONUMENTS (P.R.M.'S) ARE DESIGNATED THUS: ☐
 - THE SOUTH LINE OF THE SOUTHEAST ONE-QUARTER OF SECTION 24, TOWNSHIP 47 SOUTH, RANGE 41 EAST, IS ASSUMED TO BEAR NORTH 89°59'54" EAST AND ALL OTHER BEARINGS ARE RELATIVE THERETO.
 - THERE SHALL BE NO BUILDINGS OR ANY KIND OF CONSTRUCTION PLACED ON UTILITY EASEMENTS. CONSTRUCTION OR LANDSCAPING UPON WATER MANAGEMENT MAINTENANCE EASEMENTS MUST BE IN CONFORMANCE WITH ORDINANCE 86-21 AND ALL OTHER BUILDINGS AND ZONING CODES AND/OR ORDINANCES OF PALM BEACH COUNTY.
 - THERE SHALL BE NO TREES OR SHUBS PLACED ON UTILITY EASEMENTS WHICH ARE PROVIDED FOR WATER AND SEWER USE. LANDSCAPING ON OTHER UTILITY EASEMENTS SHALL BE ALLOWED ONLY AFTER CONSENT OF ALL OTHER UTILITIES OCCUPYING SAME.
 - ALL PLATTED UTILITY EASEMENTS SHALL ALSO BE EASEMENTS FOR THE CONSTRUCTION, INSTALLATION, MAINTENANCE AND OPERATION OF CABLE TELEVISION SERVICES; PROVIDED, HOWEVER, THAT NO SUCH CONSTRUCTION, INSTALLATION, MAINTENANCE OR OPERATION OF CABLE TELEVISION SERVICES SHALL INTERFERE WITH THE FACILITIES AND SERVICES OF AN ELECTRIC, TELEPHONE, GAS OR OTHER PUBLIC UTILITY.
 - THERE MAY BE ADDITIONAL RESTRICTIONS THAT ARE NOT RECORDED ON THIS PLAT THAT MAY BE FOUND IN THE PUBLIC RECORDS OF THIS COUNTY.



TAL 782

NOTE
EASEMENTS SHOWN HEREON AND NOT ON PLAT OF WEST BOCA SQUARE, PLAT BOOK 66, PAGES 95, 96, AND 97 PUBLIC RECORDS OF PALM BEACH COUNTY, FLORIDA ARE NEW EASEMENTS. EASEMENTS SHOWN ON SAID PLAT OF WEST BOCA SQUARE THAT ARE NOT SHOWN HEREON HAVE BEEN ABANDONED. SEE OFFICIAL RECORD BOOK 6724 PAGE 204.

WEST BOCA SQUARE REPLAT
PAGE 143
FLOOD MAP # 100B
ZONING KE-SE
ZIP CODE 33413
BLOCK 67
SUBDIVISION B
QUAD # 6A
FIELD NAME Same
DATE 10/11/90

Field Book No.	Pg.
Design	
Drawn	B. WILLIAMS
Checked	W. MITZELFELD

REO SURVEYORS, INC.
4361 OKEECHOBEE BLVD.
WEST PALM BEACH, FLORIDA

WEST BOCA SQUARE REPLAT

67/143

No.	90-1090
Scale	AS SHOWN
Date	OCT, 1990
Sheet	3
of	3
File No.	BF-2445-A