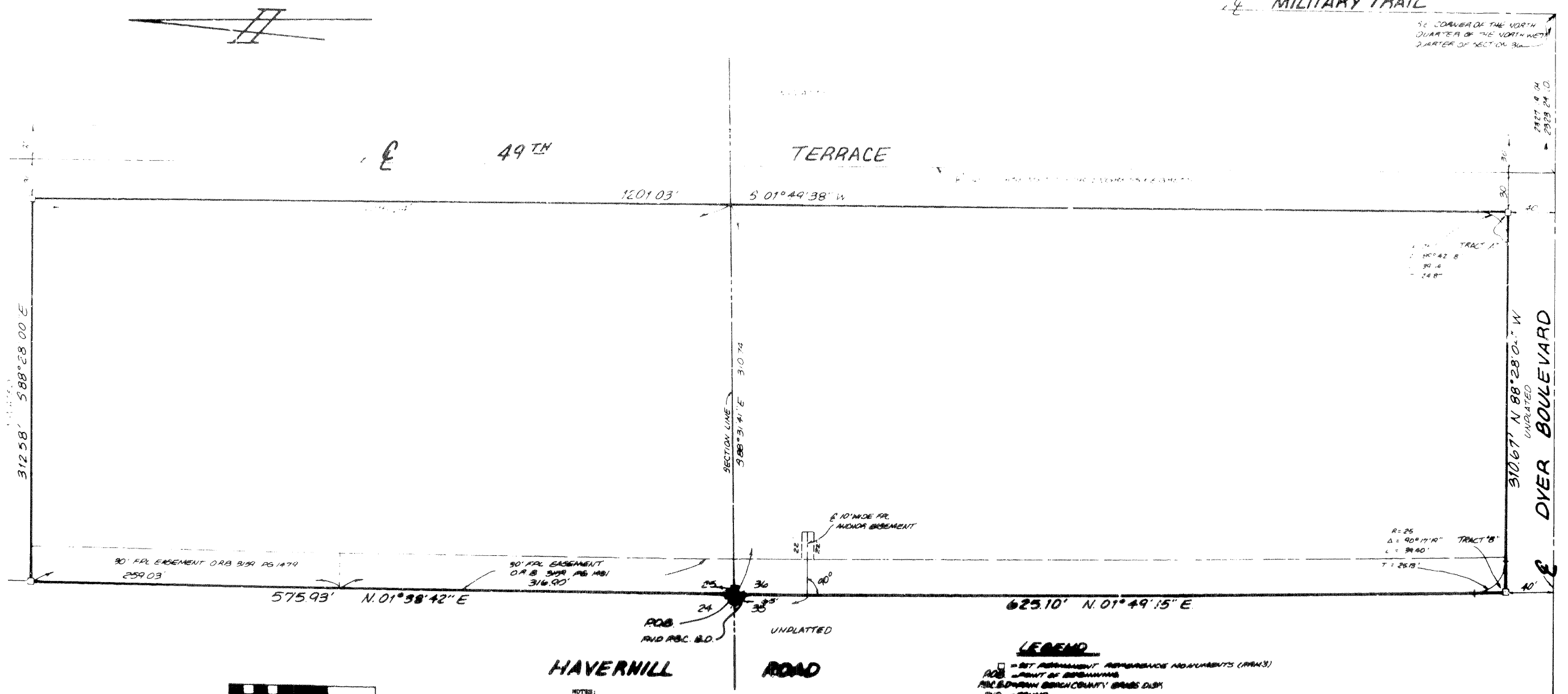


BOUNDARY PLAT OF JAMES LAND

BEING A PORTION OF SECTIONS 25 AND 36,
TOWNSHIP 42 SOUTH, RANGE 42 EAST, CITY OF
RIVIERA BEACH, PALM BEACH COUNTY, FLORIDA

SEPTEMBER, 1990
SHEET 2 OF 2

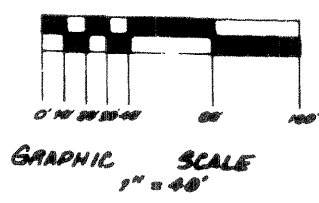
MILITARY TRAIL



SE CORNER OF THE NORTH QUARTER OF THE NORTH WEST QUARTER OF SECTION 36

TRACT 'A'
1. 100' x 42' 8"
2. 30' x 6'
3. 24' x 8'

TRACT 'B'
R=25
 $\Delta = 90^{\circ}17'10''$
L = 34.40'
T = 26.75'



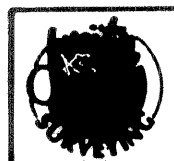
HAVERNILL ROAD

NOTES:

1. SURVEY REFERENCES: BOUNDARIES SHOWN RELATE TO FLORIDA STATE PLANE COORDINATES, EAST ZONE, FROM BEACH COUNTY 1972 MERIDIAN ADJUSTMENT.
2. *NOTICE: THERE MAY BE ADDITIONAL INSTRUMENTS THAT ARE NOT REFERRED TO IN THIS PLAT THAT MAY BE FOUND IN THE PUBLIC RECORDS OF THIS COUNTY.

LEGEND

- = SET ADJUSTMENT REFERENCE ADJUSTMENTS (P.P.M.S.)
- ROB = POINT OF BEGINNING
- P.B.C. = PALM BEACH COUNTY GRANITE DISK
- FWO = FOUND
- MA = APPROVED
- MB = BOUND



P.O. Box 7067
Jupiter • Florida 33458-7067
407-744-6884

SHEET
2
OF
2

90-078