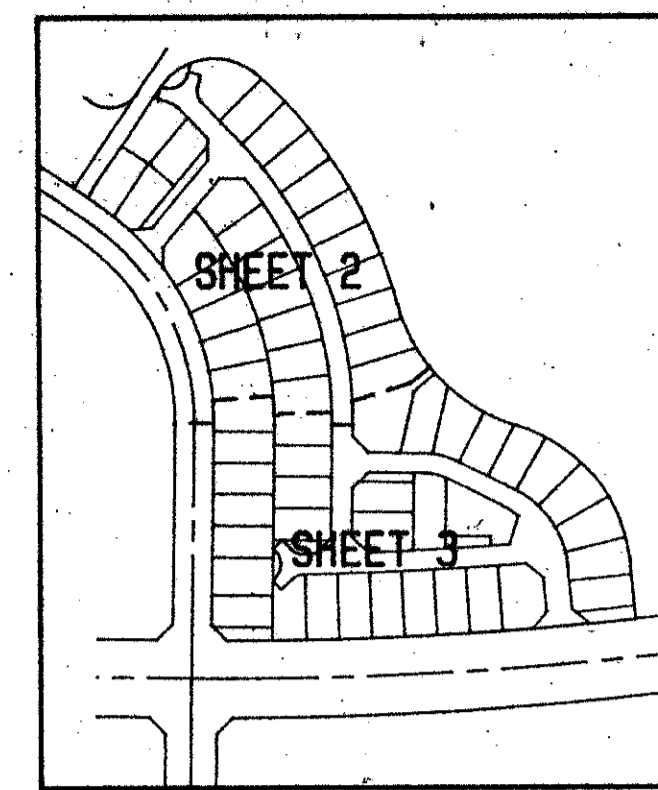


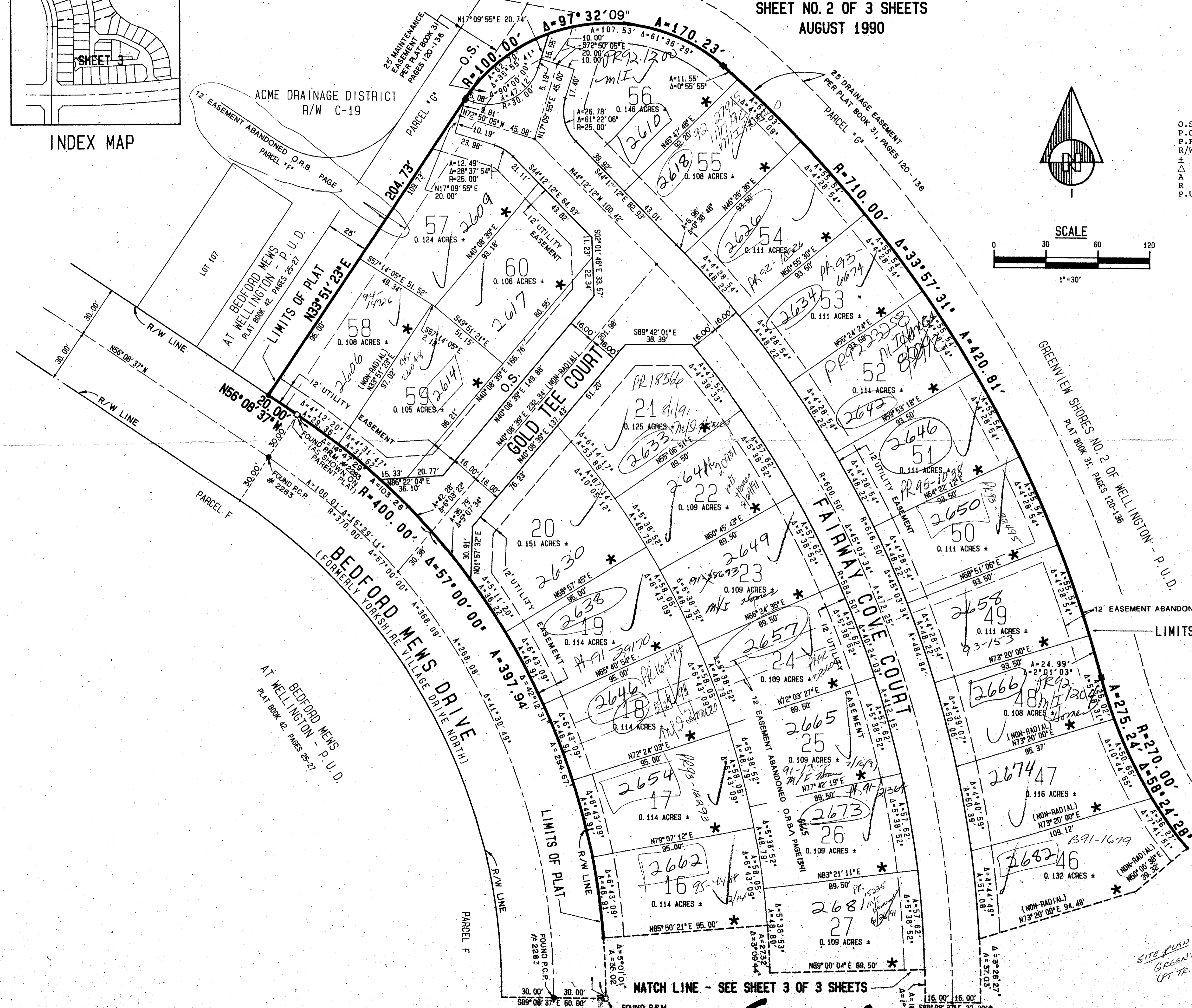
FAIRWAY COVE OF WELLINGTON P. U. D.

BEING A REPLAT OF LOTS 1, 2, AND 3, BLOCK 50, GREENVIEW SHORES NO. 2 OF WELLINGTON - P. U. D.
AS RECORDED IN PLAT BOOK 31, PAGES 120-136, INCLUSIVE, PUBLIC RECORDS OF PALM BEACH COUNTY, FLORIDA
LYING IN PART OF SECTION 16, TOWNSHIP 44 SOUTH, RANGE 41 EAST,
PALM BEACH COUNTY, FLORIDA

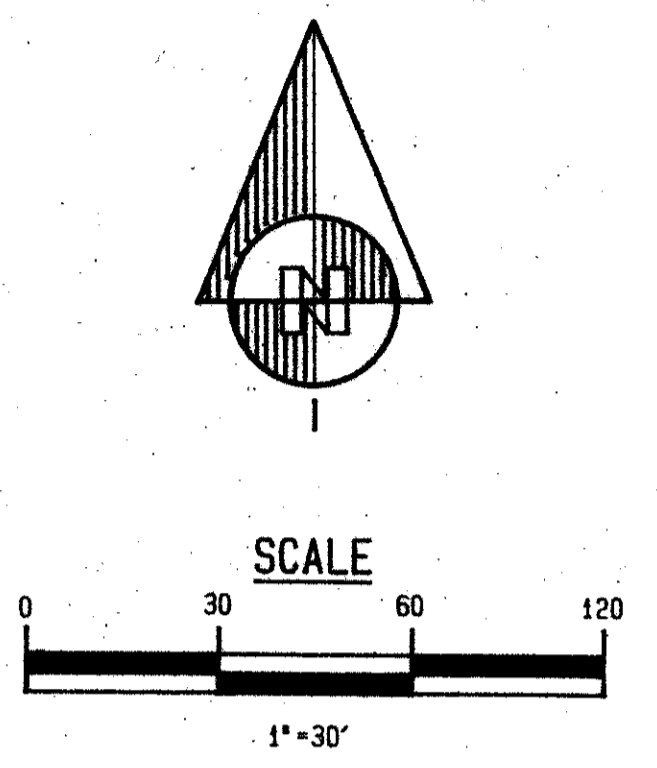
SHEET NO. 2 OF 3 SHEETS
AUGUST 1990



INDEX MAP



- LEGEND**
- O.S. = OPEN SPACE
 - P.C.P. = PERMANENT CONTROL POINT
 - P.R.M. = PERMANENT REFERENCE MONUMENT
 - R/W = RIGHT OF WAY
 - ± = MORE OR LESS
 - Δ = CENTRAL ANGLE
 - A = ARC LENGTH
 - R = RADIUS
 - P.U.D. = PLANNED UNIT DEVELOPMENT



SUBDIVISION * FAIRWAY COVE
 BOOK 67 PAGE 114
 FLOOD ZONE 15
 FLOOD MAP *
 ZONING AR
 CUD # 77
 GE 86-32
 ZIP CODE 33414
 PUD NAME Greenview Shores No. 2
 67/114

071 211

MATCH LINE - SEE SHEET 3 OF 3 SHEETS

FAIRWAY COVE OF WELLINGTON - P.U.D.

APP. BY [Signature]
CHECKED BY [Signature]

STE. PLAN: BU-50
GREENVIEW SHORES #2
(P. TR. 12)

0332-094

Pet 86-32

Dailey-Fotony, inc.
 land surveyors, planners, engineers
 5050 10th Avenue North, Suite 8 - Lake Worth, Florida 33463-2022
 Phone 407-885-8727