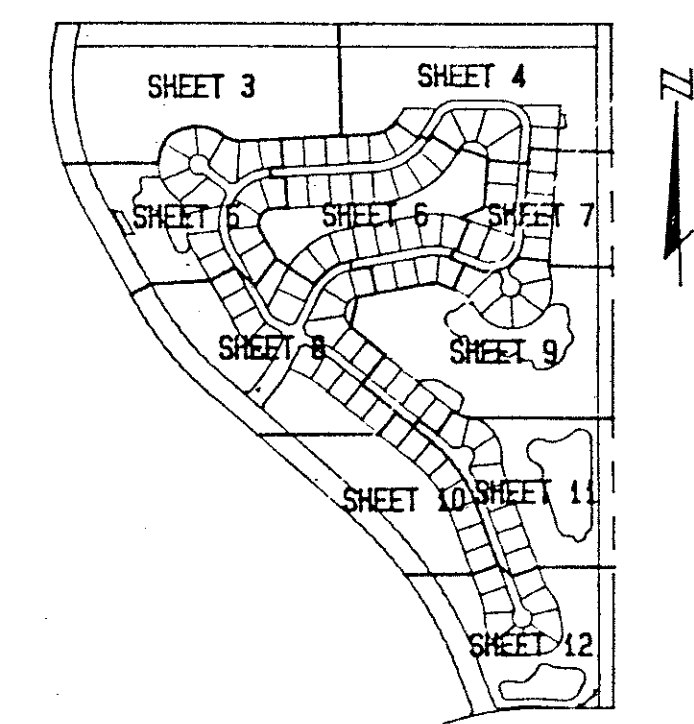


BINK'S FOREST OF THE LANDINGS AT WELLINGTON P. U. D. PLAT 1

IN PARTS OF SECTIONS 6 AND 7, TOWNSHIP 44 SOUTH, RANGE 41 EAST
PALM BEACH COUNTY, FLORIDA
IN TWELVE SHEETS SHEET No. 5

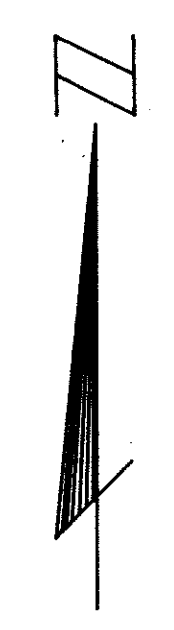
60

5

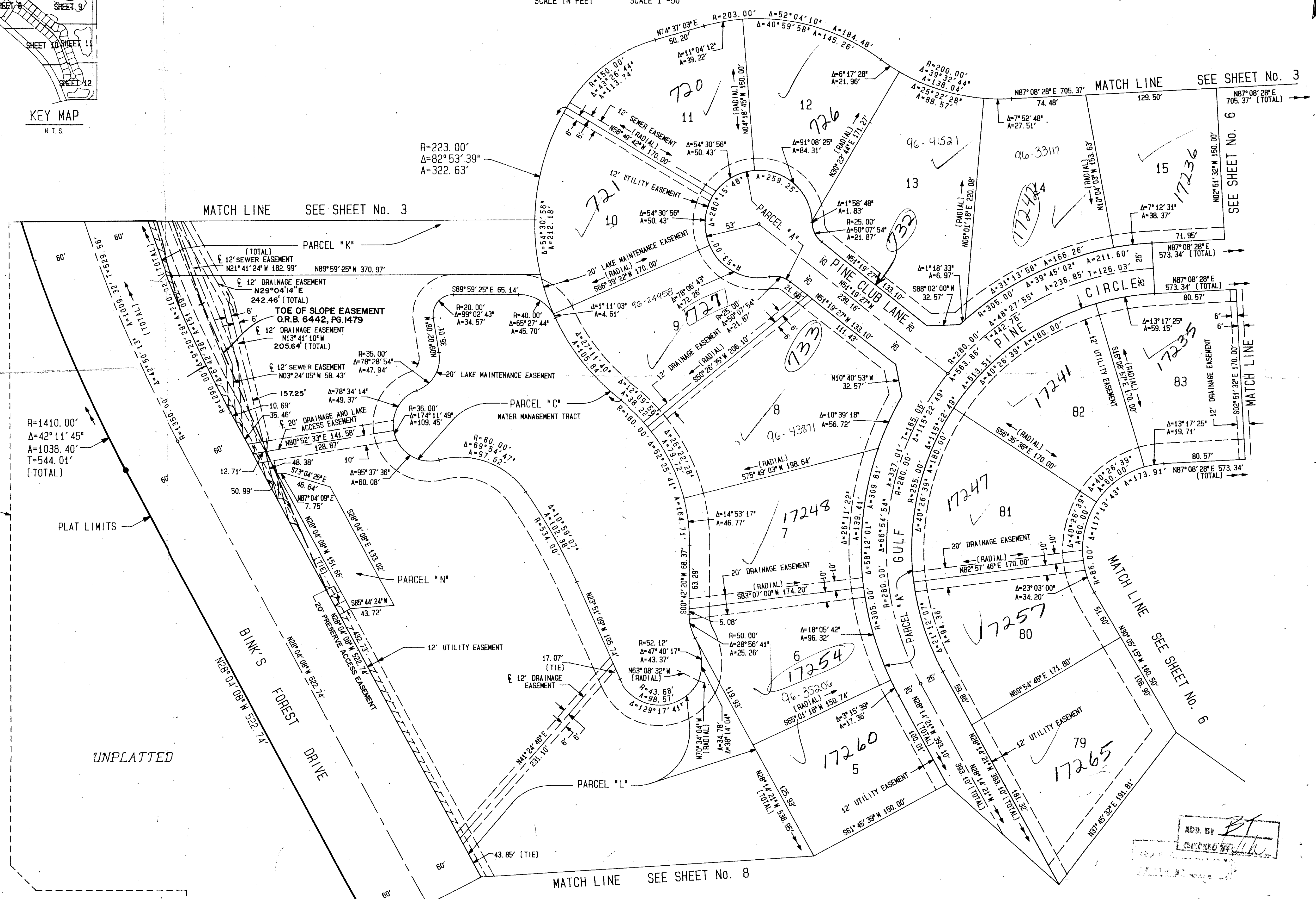


KEY MAP
N.T.S.

GEE AND JENSON
ENGINEERS - ARCHITECTS - PLANNERS, INC.
APRIL 1989
SCALE IN FEET SCALE 1"=50'



STATE OF FLORIDA
COUNTY OF PALM BEACH
This plat was filed for
record at _____ M. this _____ day
of _____ 1990, and duly
recorded in Plat Book No. _____
on Pages _____ and _____
JOHN B. DUNKLE
Clerk Circuit Court
By: _____ D. C.



WOODFIELD NO. 1 OF THE LANDINGS
ABANDONED O. R. B. 4690,
PGS. 1585 - 1587

SUBDIVISION - BINK'S FOREST OF THE
LANDINGS
BOOK L7 PAGE LCO
FLOOD MAP - 100B
DRAWING KE
DATE 08/16/90
BY J. B. GEE

COMPUTED D. M. LEI/CADD
DRAWN D. M. LEI/CADD
CHECKED M. J. J.
APPROVED

6/4/01
67/60
0269-009

--- LIMITED ACCESS EASEMENT WATER MANAGEMENT TRACTS ARE THE PERPETUAL MAINTENANCE OBLIGATION OF FOURTH WELLINGTON, INC.

BINK'S FOREST OF THE LANDINGS AT WELLINGTON P.U.D. PLAT 1