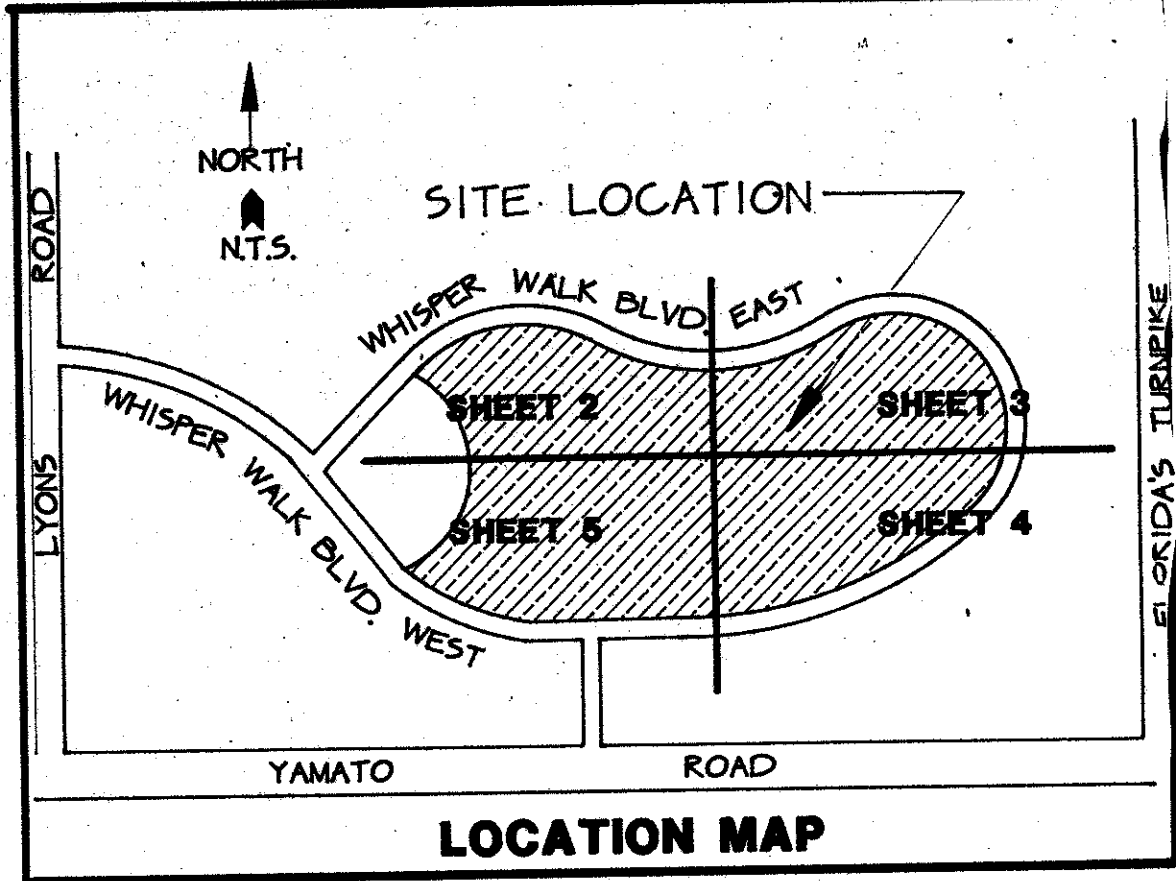


# WHISPER WALK SECTION "E"

SITUATE IN SECTION 5, TOWNSHIP 47 SOUTH, RANGE 42 EAST,  
PALM BEACH COUNTY, FLORIDA,  
BEING A REPLAT OF A PORTION OF TRACT A OF  
THE BOUNDARY PLAT OF WHISPER WALK, A P.U.D.  
(P.B. 43, PG. 189 - 191)

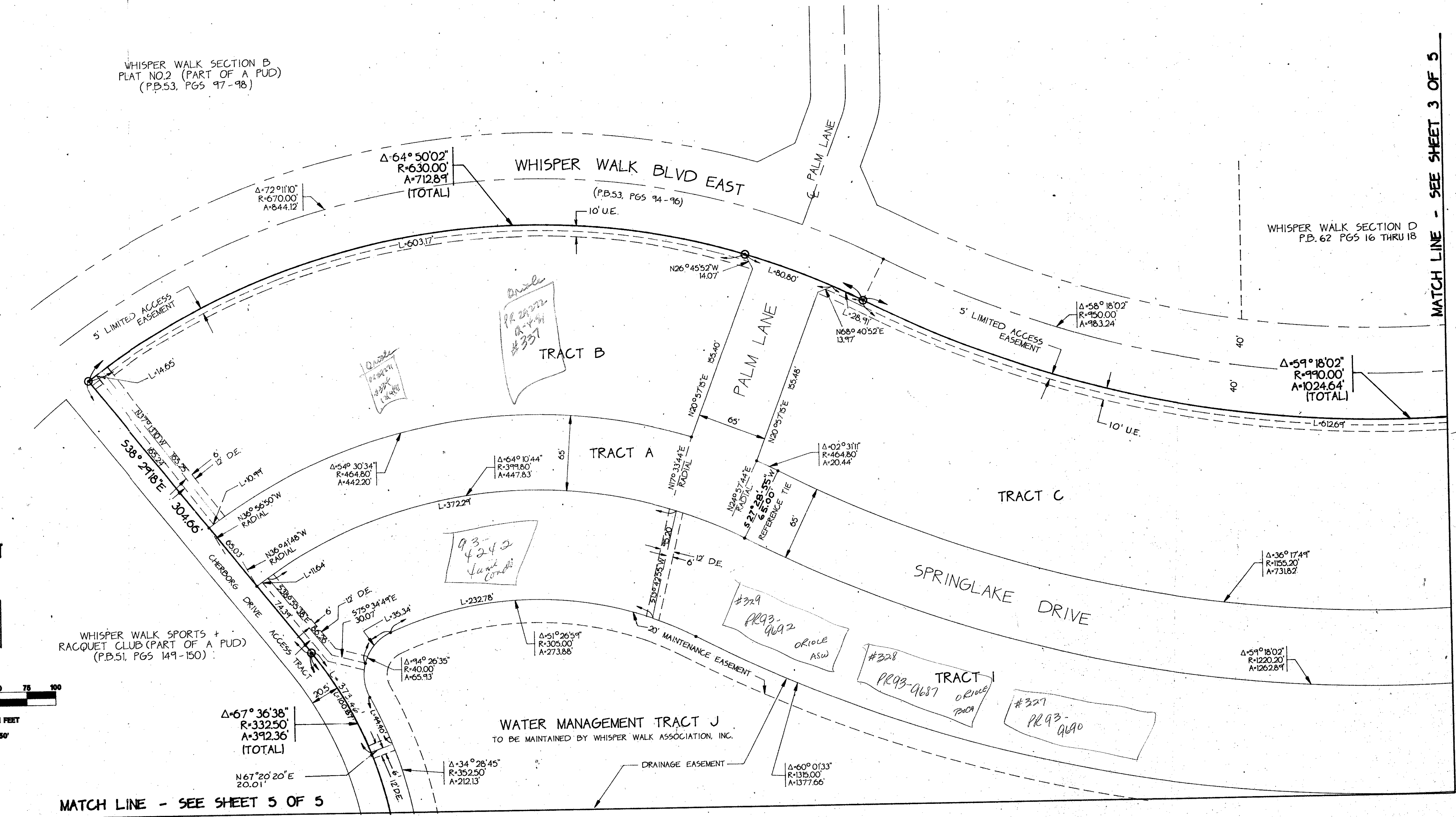
THIS INSTRUMENT PREPARED BY JAMES E. PARK, P.L.S.  
WILLIAMS, HATFIELD & STONER, INC. - ENGINEERS PLANNERS SURVEYORS  
1325 SOUTH CONGRESS AVENUE, SUITE 118, BOYNTON BEACH, FLORIDA 33426

SHEET 2 OF 5



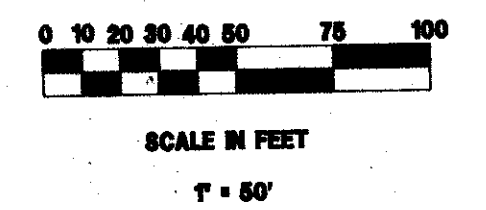
WHISPER WALK SECTION B  
PLAT NO.2 (PART OF A PUD)  
(P.B.53, PGS 97-98)

WHISPER WALK SECTION D  
P.B. 62 PGS 16 THRU 18



MATCH LINE - SEE SHEET 3 OF 5

Bldg 321	PR 92-10665	4/20/92
Bldg 344	PR 92-10667	4/20/92
Bldg 344	PR 92-10667	4/20/92
Bldg 351	PR 92-12983	5/13/92
Bldg 352	PR 92-12984	5/13/92
Bldg 274	PR 93-1397	
Bldg 275	PR 93-1400	
Bldg 291	PR 93-3446	
Bldg 331	PR 93-3448	



SUBDIVISION - Whisper Walk Section E  
BOOK 47  
PAGE 41  
FLOOD ZONE B  
QUAD # 53  
ZONING KS  
SE 80-229  
ZIP CODE 33434  
PUD NAME SCONE  
5/1/92

TAZ 555

0339-004  
Pet 80-229  
Assoc #000  
07/41

## WHISPER WALK, SECTION "E"