

# MONTERRA

PART OF PINE RIDGE AT DELRAY BEACH NORTH P.U.D.

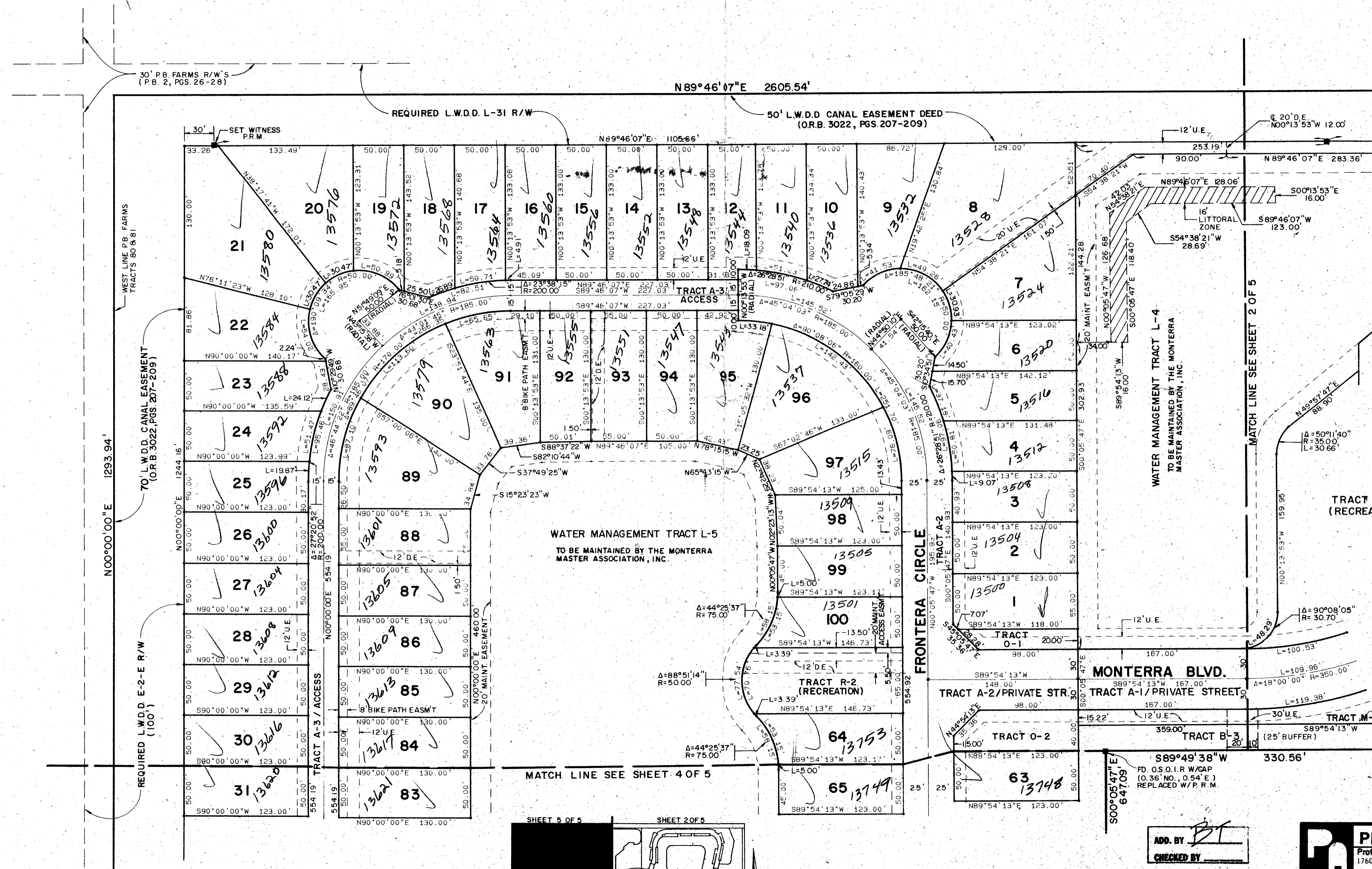
BEING A REPLAT OF HIDDEN LAKES PHASE NO. 1, (P.B. 41, PGS. 41-42) AND  
A PORTION OF BLOCK 9, PALM BEACH FARMS COMPANY PLAT NO. 1 (P.B. 2, PGS. 26-28)  
SITUATE IN SECTION 9, TOWNSHIP 46 SOUTH, RANGE 42 EAST  
PALM BEACH COUNTY, FLORIDA

AUGUST, 1990

SHEET 5 OF 5

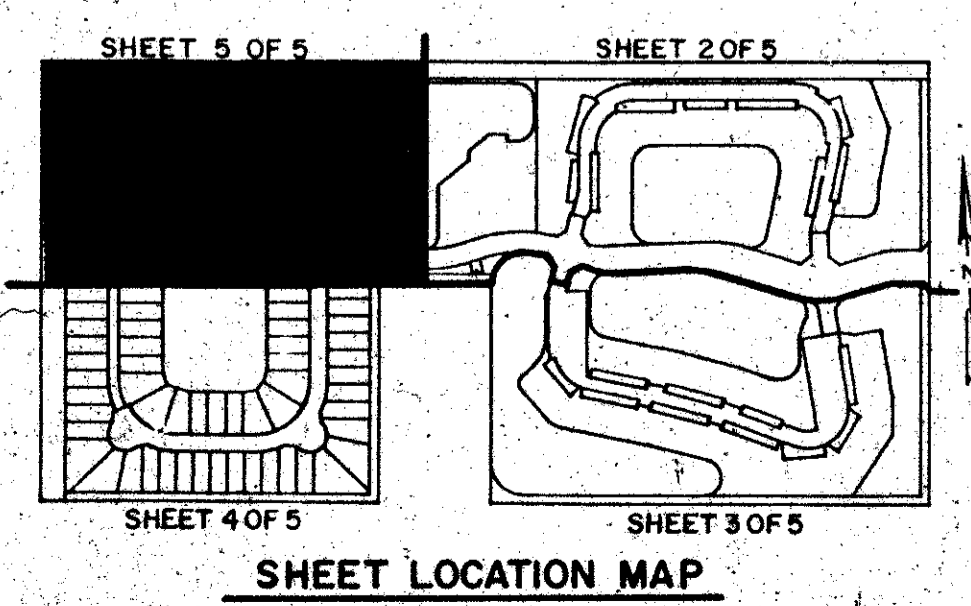
# 194

STATE OF FLORIDA  
COUNTY OF PALM BEACH  
THIS PLAT WAS FILED FOR  
RECORD THIS DAY OF  
AUGUST, 1990 AND DULY RECORDED  
IN PLAT BOOK ON PAGES  
THROUGH  
BY: JOHN B. DUNKLE, CLERK  
D.C.



SUBDIVISION \* MONTERRA  
BOOK 66  
PAGE 194  
FLOOD MAP # 200A  
ZONING RS  
QUAD # 51  
ZIP CODE 33446  
# 81-215  
FILE NAME PINE RIDGE @ DELRAY BCH  
07/16/90

TAZ 459



ADD. BY BT  
CHECKED BY

0253-001  
Pet. 81-215

**PETSCH & ASSOCIATES, INC.**  
Professional Engineers • Land Surveyors • Development Consultants  
1760 N. Congress Ave., Suite 203, W. Palm Beach, FL 33409  
(407) 640-3800

**MONTERRA**

DESIGNED	CHECKED	SCALE	JOB NO.	SHEET OF
M.E.H.	RAH	1" = 50'	89-042	5 5

66/194