

# BOCA WEST P.U.D. MASTER PLAT 2

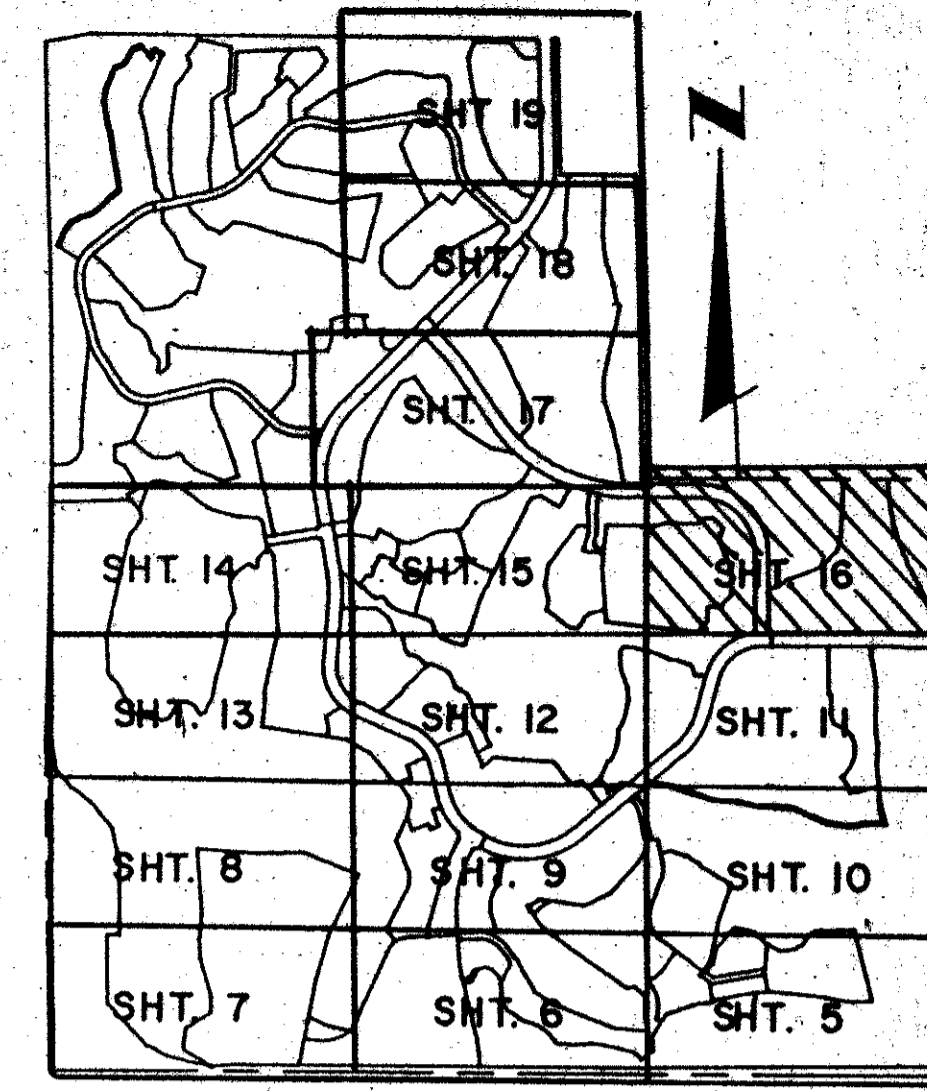
IN SECTIONS 9, 15 AND 16, TOWNSHIP 47 SOUTH, RANGE 42 EAST  
PALM BEACH COUNTY, FLORIDA  
IN 19 SHEETS - SHEET NO. 16

GEE & JENSON  
ENGINEERS - ARCHITECTS - PLANNERS, INC.  
WEST PALM BEACH, FLORIDA  
FEBRUARY 1989

100 0 100 200 300 400  
SCALE IN FEET SCALE 1" = 100'

0214-026  
**174**

STATE OF FLORIDA  
COUNTY OF PALM BEACH  
This plat was filed for  
record at \_\_\_\_\_ M. this \_\_\_\_\_ day  
of \_\_\_\_\_, 1990, and duly  
recorded in Plat Book No. \_\_\_\_\_  
on Pages \_\_\_\_\_ thru \_\_\_\_\_  
JOHN B. DUNKLE  
Clerk Circuit Court  
By: \_\_\_\_\_ D.C.

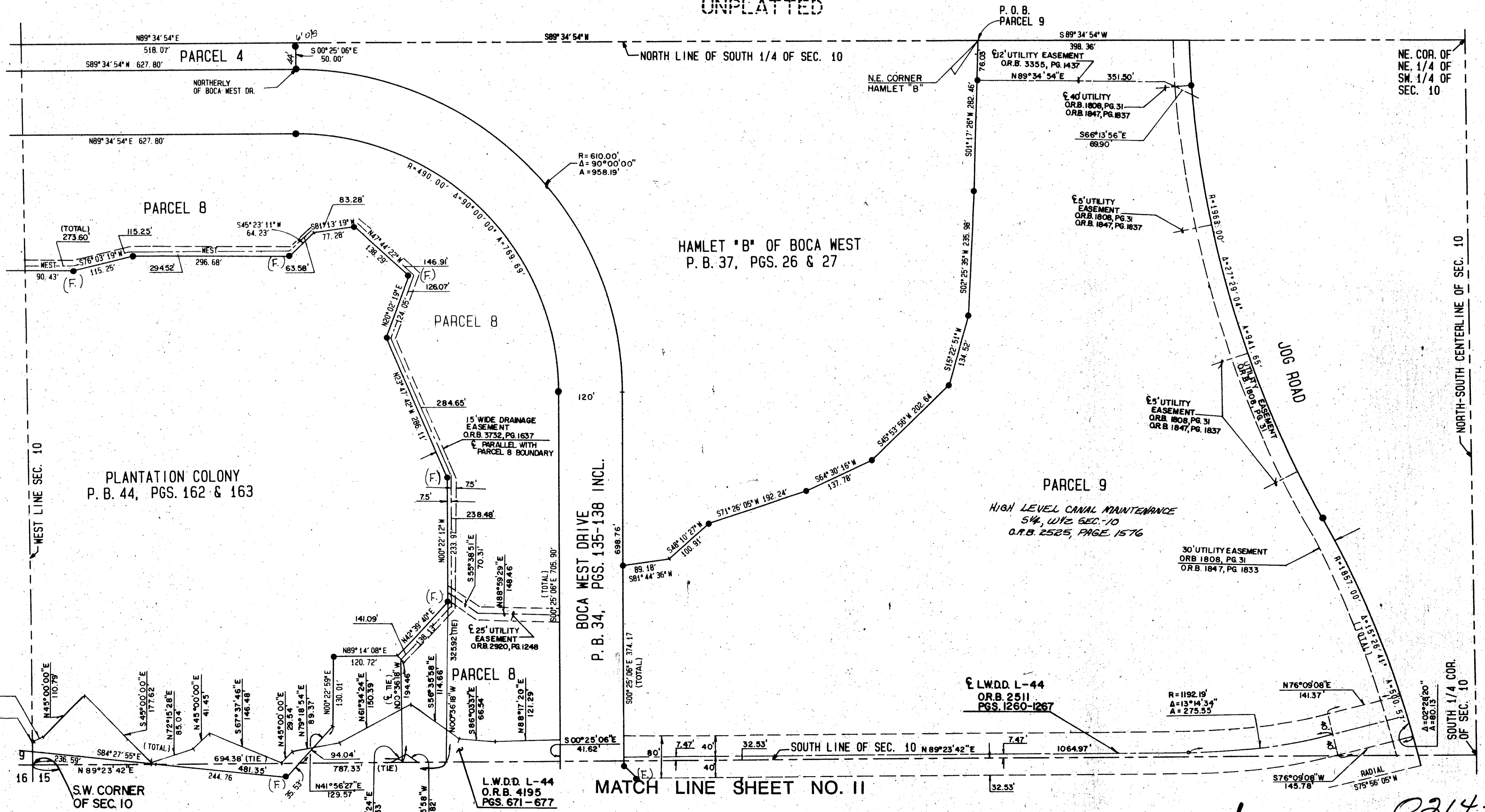


KEY MAP

UNPLATTED



MATCH LINE SHEET NO. 15



MATCH LINE SHEET NO. 11

TAZ 607  
SUBDIVISION: BOCA WEST MASTER PLAT 2  
BOOK: C  
PAGE: 174  
FLOOD ZONE: F  
ZONING: AR  
QUAD: 53  
SE: 85-7  
P.U.D. NAME: same  
DATE: 12/17/87

COMPUTED: [Signature]  
DRAWN: O.L.B.  
CHECKED: J.H.D.  
COMMENTS:  
APPROVED: [Signature]  
REVISION:

BOCA WEST PUD MASTER PLAT 2  
66/174  
0214-026  
Pt. 85-7