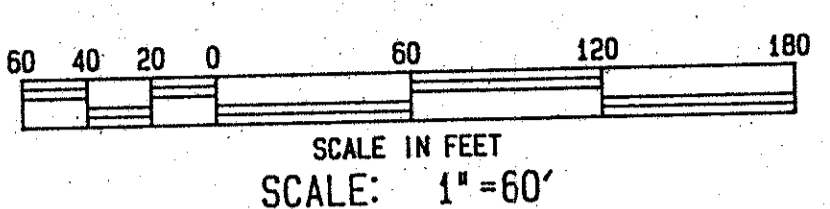


PLAT No. 16 ST. ANDREWS COUNTRY CLUB

(A P.U.D.)

BEING A PORTION OF SECTION 34, TOWNSHIP 46 SOUTH,
RANGE 42 EAST, PALM BEACH COUNTY, FLORIDA.

JUNE, 1990



CIVIC TRACT
(TRACT "D")
PLAT No. 1 ST. ANDREWS COUNTRY CLUB
(A P.U.D.)
P.B. 43, PG. 81

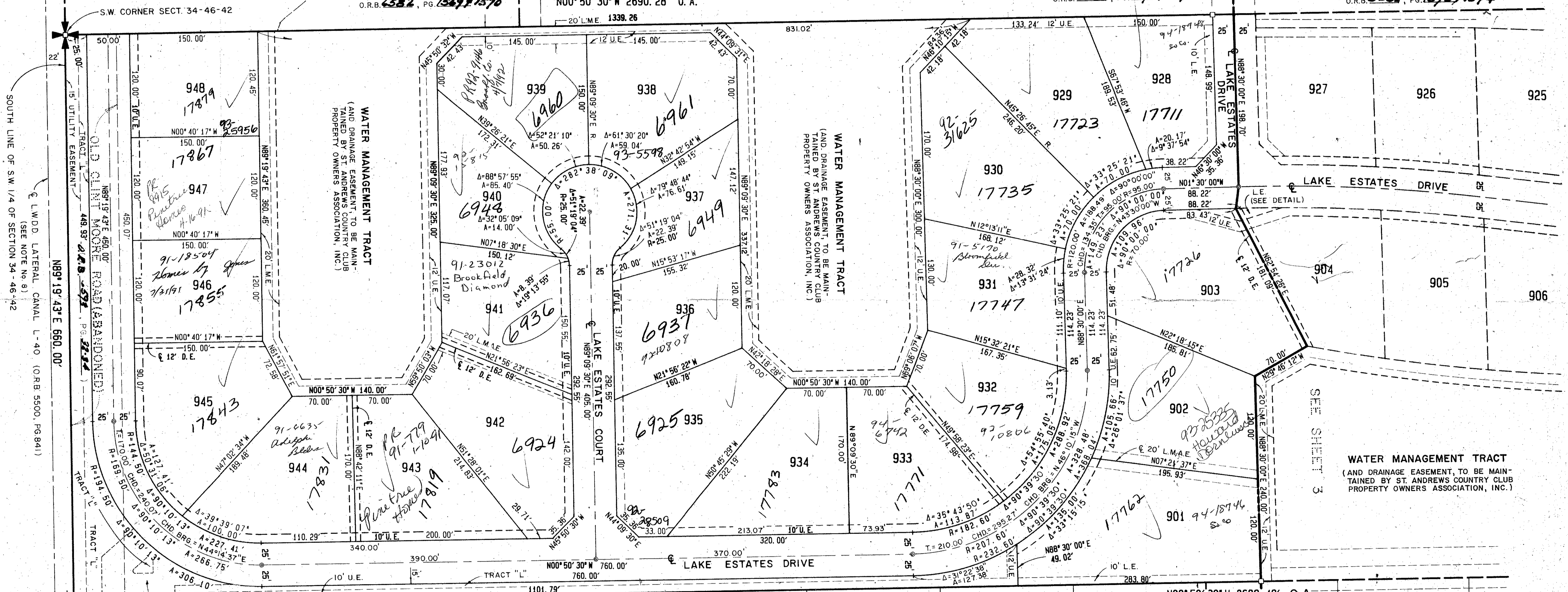
TRACT "A"
PLAT NO. 2 ST. ANDREWS COUNTRY CLUB
(A P.U.D.)
P.B. 43, PG. 170-178

WATER MANAGEMENT TRACT
O.R.B. 6582, PG. 1571-1572

N00°50'30"W 2690.28' O.A.
20' L.M.E. 1339.26

WATER MANAGEMENT TRACT
O.R.B. 6582, PG. 1571-1572

WATER MANAGEMENT TRACT
O.R.B. 6582, PG. 1571-1572



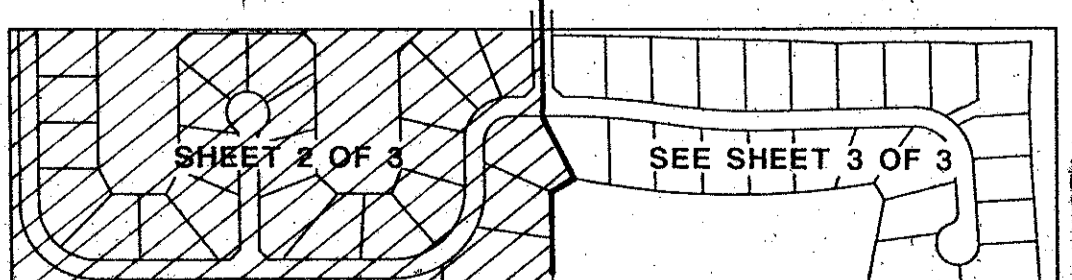
SOUTH LINE OF SW 1/4 OF SECTION 34-46-42
(SEE NOTE NO. 8)

Q L.W.D.D. LATERAL CANAL L-40 (O.R.B. 5500, PG. 841)

OLD CLINT MOORE ROAD (ABANDONED)

OLD CLINT MOORE ROAD

UTILITY EASEMENT
SCALE: 1"=60'



KEY MAP
SCALE: 1"=500'

LANDSCAPE EASEMENT
DETAIL
(NOT TO SCALE)

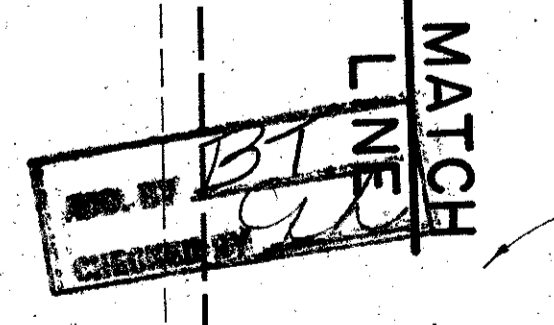
BONIELLO'S ACRES P.U.D.
PHASE TWO
(P.B. 33, PGS. 166-167)

PLAT OF
LAKE ESTATES
PLAT No. 16
ST. ANDREWS COUNTRY CLUB

WALLACE SURVEY CORP.			
9176 ALTERNATE A1A, LAKE PARK, FLORIDA 33403			
FIELD	W.B.	JOB NO	90-1085
OFFICE	M.B. & R.C.	DATE	JUNE, 1990
C'KD	F.G.	REF.	

SUBDIVISION - LAKE ESTATES
PAGE 157
FLOOD ZONE B
FLOOD MAP #2154
ZONING RE
ROAD # 37
SE 80-73
PUD NAME
ST. ANDREWS C.C.

TAL 603



0305-013
Pet. 80-7

66/157