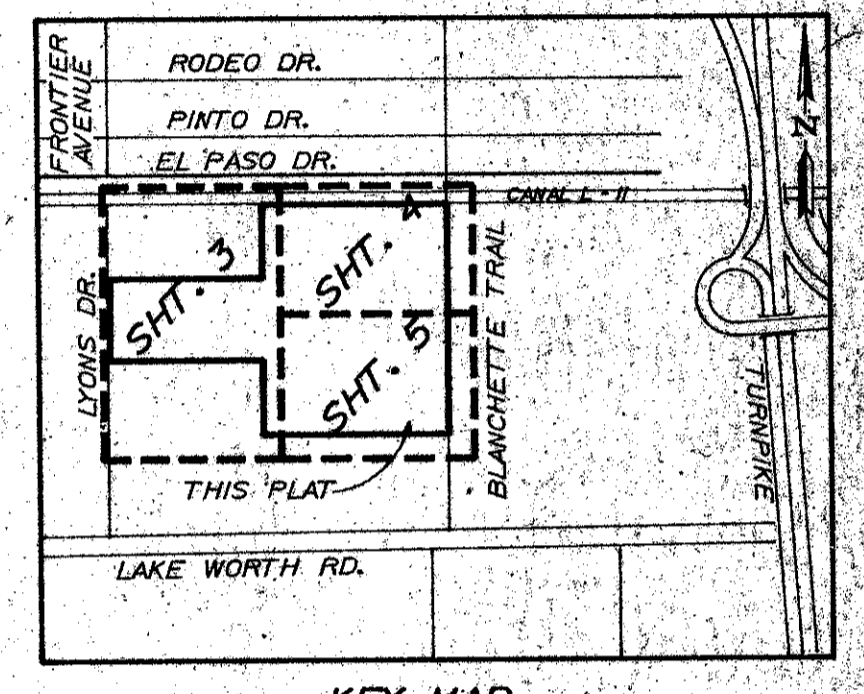
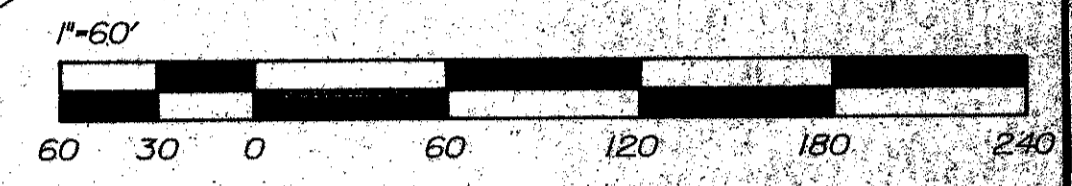
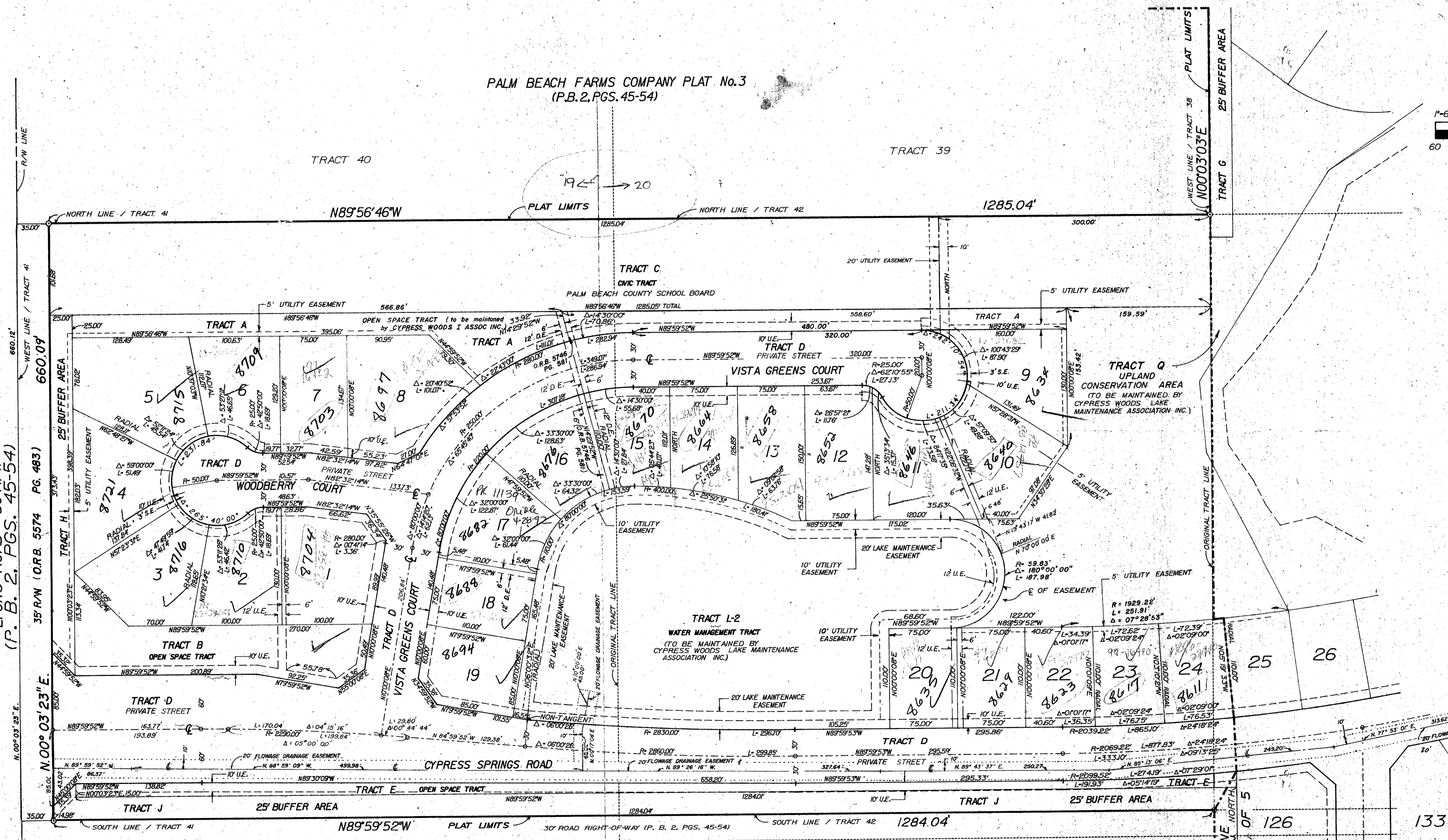


A PART OF CYPRESS WOODS, PLANNED UNIT DEVELOPMENT
 "CYPRESS WOODS I"
 LYING IN PORTIONS OF SECTIONS 19, 20, AND 29, TOWNSHIP 44 SOUTH, RANGE 42 EAST
 BEING A REPLAT OF A PORTION OF TRACTS 37, 38, 41, 42, 43, 44, 53 AND 54,
 BLOCK 24 OF "PALM BEACH FARMS COMPANY PLAT NO. 3", PLAT BOOK 2, PAGES 45-54,
 INCLUSIVE, OF THE PUBLIC RECORDS OF PALM BEACH COUNTY, FLORIDA.
 AUGUST 1988

STATE OF FLORIDA SS
 COUNTY OF PALM BEACH
 THIS PLAT WAS FILED FOR RECORD
 AT THIS DAY
 OF A.D. 1988 AND
 DULY RECORDED IN PLAT BOOK
 ON PAGES THRU
 JOHN B. DUNKLE
 CLERK OF THE CIRCUIT COURT
 BY: D. C.



- SURVEYOR'S NOTES:**
1. BEARINGS SHOWN HEREON ARE RELATIVE TO AN ASSUMED BEARING OF NORTH, THE CENTERLINE OF BLANCHETTE TRAIL, A PUBLIC RIGHT-OF-WAY, AS LOCATED IN SECTION 20, TOWNSHIP 44 SOUTH, RANGE 42 EAST, PALM BEACH COUNTY, FLORIDA.
 2. @ DENOTES PERMANENT REFERENCE MONUMENT.
 3. O DENOTES PERMANENT CONTROL POINT.
 4. THIS PLAT CONFORMS TO THE MINIMUM TECHNICAL STANDARDS FOR LAND SURVEYING IN THE STATE OF FLORIDA, AS ADOPTED BY THE DEPARTMENT OF PROFESSIONAL REGULATION, BOARD OF LAND SURVEYORS (CHAPTER 12H-6, FLORIDA ADMINISTRATIVE CODE).
 5. THERE MAY BE ADDITIONAL RESTRICTIONS THAT ARE NOT RECORDED ON THIS PLAT THAT MAY BE FOUND IN PUBLIC RECORDS OF PALM BEACH COUNTY.
 6. CURVILINEAR LOT LINES ARE NON-RADIAL UNLESS OTHERWISE NOTED.
 7. D. E. - DENOTES DRAINAGE EASEMENT
 8. U. E. - DENOTES UTILITY EASEMENT
 9. S. E. - DENOTES SIDEWALK EASEMENT



THIS INSTRUMENT WAS PREPARED BY RONALD E. ROONEY
 IN AND FOR THE OFFICES OF CONSULT-TECH ENGINEERING, INC.
 50 E. SAMPLE ROAD FOURTH FLOOR
 POMPANO BEACH, FLORIDA 33064

PALM BEACH FARMS COMPANY PLAT No.3
 (P.B.2, PGS. 45-54)

ADD BY BT
 CHECKED BY [signature]

SUBDIVISION: CYPRESS WOODS I
 BOOK: 66
 FLOOD ZONE: B
 QUAD: 48
 ZIP CODE: 33062
 PUB. NAME: [unclear]
 DATE: 1/20/1988

Cypress Woods I 66/129

0515-001
 Plat. 86-98