

PALM LAKES APARTMENT COMPLEX

A PORTION OF DORFMAN P.U.D.

A PARCEL OF LAND LYING IN THE SOUTHWEST ONE-QUARTER
OF SECTION 13, TOWNSHIP 43 SOUTH, RANGE 42 EAST,
PALM BEACH COUNTY, FLORIDA - JANUARY, 1990

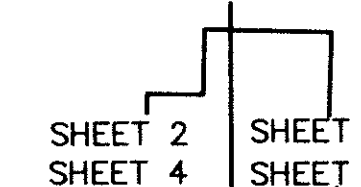
0492-002

91

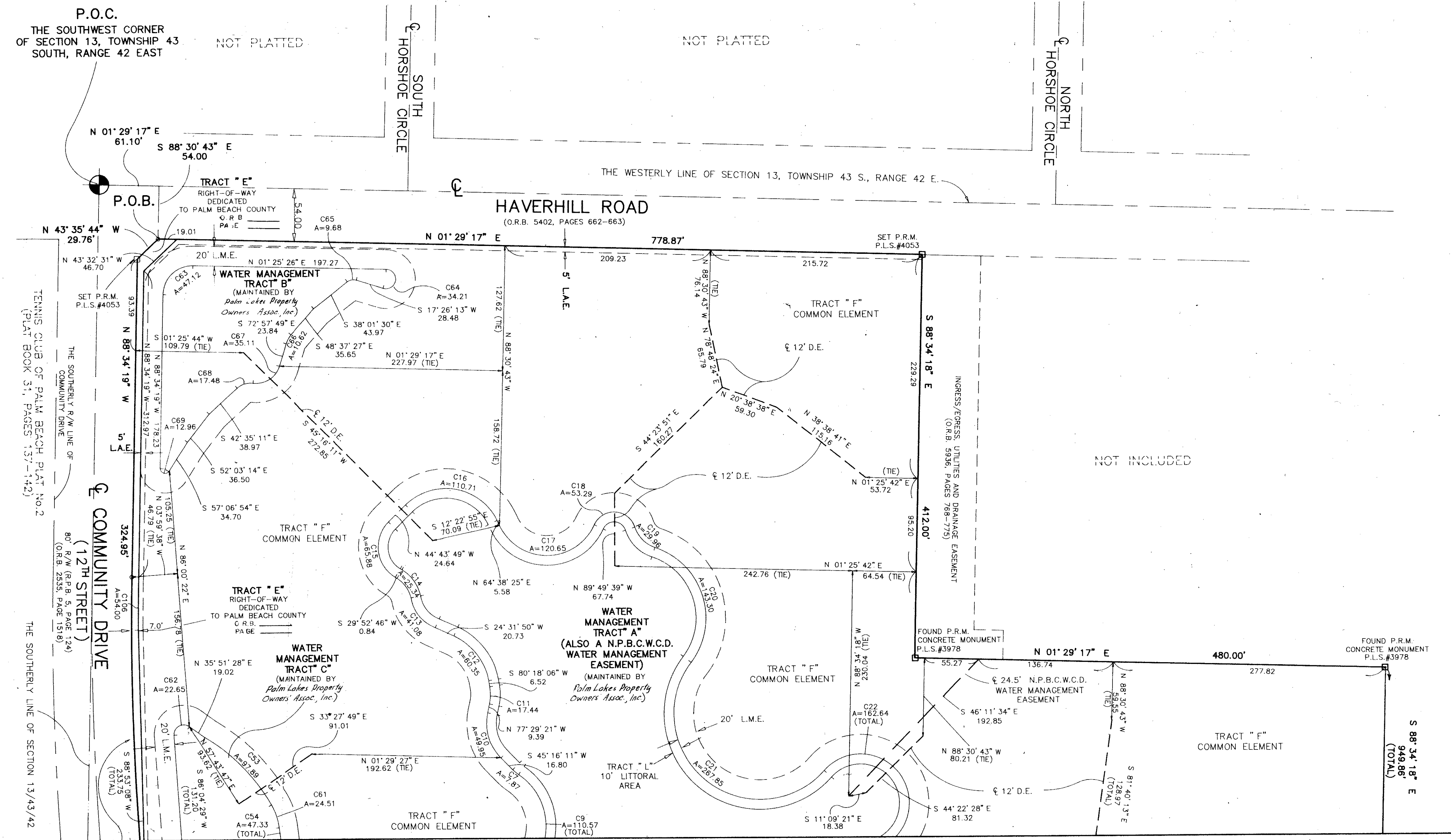
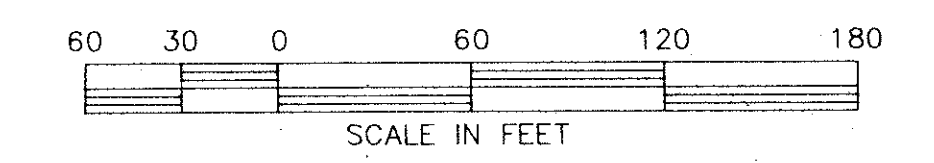
INDEX OF SHEETS

- SHEET 1 = COVER SHEET
- SHEET 2 = DRAINAGE AND LIMITED ACCESS EASEMENT
- SHEET 3 = DRAINAGE AND LIMITED ACCESS EASEMENT
- SHEET 4 = UTILITY EASEMENTS AND P.U.D. BUFFER
- SHEET 5 = UTILITY EASEMENTS AND P.U.D. BUFFER

STATE OF FLORIDA
COUNTY OF PALM BEACH
THIS PLAN WAS FILED FOR
RECORD AT
THIS DAY OF
AD. 19 AND DULY RECORDED
IN PLAT BOOK ON PAGES
AND
JOHN B. DUNKLE, CLERK
CIRCUIT COURT
BY:



SCALE: 1"=80'



EASEMENT CURVE DATA:

CURVE	DELTA	RADIUS	ARC	CHORD	TANGENT	CHORD BRG
7	11° 16' 06"	40.00	7.87	7.85	3.95	S 39° 38' 08" W
9	101° 08' 55"	62.63	110.57	96.76	76.18	S 84° 34' 32" W
10	57° 14' 28"	50.00	49.95	47.90	27.28	S 73° 53' 25" W
11	27° 12' 33"	45.00	45.00	17.44	17.33	S 88° 35' 38" W
12	55° 46' 16"	62.00	60.35	58.00	32.81	S 52° 24' 58" W
13	58° 16' 38"	40.39	41.08	39.33	22.51	S 51° 30' 22" W
14	48° 24' 11"	30.00	25.34	24.60	13.48	S 54° 04' 50" W
15	105° 23' 26"	35.82	65.98	56.98	47.01	S 82° 34' 28" W
16	109° 22' 14"	58.00	110.71	58.00	94.65	S 89° 57' 18" E
17	129° 45' 47"	53.27	120.65	96.46	113.62	N 00° 14' 29" W
18	137° 24' 27"	22.22	53.29	41.40	57.00	N 03° 34' 51" E
19	53° 54' 12"	31.84	29.96	28.87	16.19	N 45° 19' 59" E
20	108° 51' 32"	75.42	143.30	122.70	105.46	N 72° 48' 39" E
21	175° 27' 15"	87.47	267.85	174.80	2203.77	N 39° 30' 48" E
22	188° 01' 27"	49.56	162.64	98.88	706.59	S 45° 47' 54" W
53	29° 14' 17"	191.84	97.89	96.84	50.04	N 45° 36' 49" E
54	0° 28' 36"	5689.62	47.33	47.33	23.67	N 83° 08' 03" E
61	22° 38' 47"	61.97	24.51	24.35	12.42	N 71° 33' 51" E
62	129° 46' 59"	10.00	22.65	18.11	21.34	N 29° 02' 02" W
63	89° 59' 45"	30.00	47.12	42.42	30.00	N 43° 34' 27" W
64	196° 00' 44"	10.00	34.21	19.81	71.10	N 80° 34' 12" W
65	55° 27' 43"	10.00	9.86	9.31	5.26	S 10° 17' 39" E
66	24° 20' 22"	25.00	10.62	10.54	5.39	S 60° 47' 38" E
67	80° 27' 53"	25.00	35.11	32.29	21.15	S 32° 43' 53" E
68	50° 05' 15"	20.00	17.48	16.93	9.34	S 17° 32' 34" E
69	148° 32' 34"	5.00	12.96	9.63	17.75	S 17° 09' 24" W
106	1° 05' 53"	2817.79	54.00	54.00	27.00	S 89° 07' 16" E

- ### LEGEND:
- R/W = RIGHT-OF-WAY
 - P.U.D. = PLANNED UNIT DEVELOPMENT
 - R.P.B. = ROAD PLAT BOOK
 - O.R.B. = OFFICIAL RECORD BOOK
 - L.A.E. = LIMITED ACCESS EASEMENT
 - C1 = CURVE DATA
 - N.P.B.C.W.C.D. = NORTHERN PALM BEACH COUNTY WATER CONTROL DISTRICT
 - P.O.C. = POINT OF COMMENCEMENT
 - P.O.B. = POINT OF BEGINNING
 - D.E. = DRAINAGE EASEMENT
 - L.M.E. = LAKE MAINTENANCE EASEMENT
 - = CENTERLINE OF N.P.B.C.W.C.D.
 - = WATER MANAGEMENT EASEMENT CENTERLINE OF 12' DRAINAGE EASEMENT
 - A=35.36 = ARC LENGTH
 - = PERMANENT REFERENCE MONUMENT
 - ⊙ = CENTERLINE

PALM LAKES APARTMENT COMPLEX
 0492-002
 85-171
 DORFMAN P.U.D.
 TAZ 1169

RADIUS=2824.79
 DELTA=5° 50' 51"
 ARC=288.29
 CHORD=288.17
 TANGENT=144.27
 CHORD BRG.=S 88° 30' 16" W
 (TOTAL)

0492-002

Ret-85-171

6/6/91

SHEET 2 OF 5

KEA

King Engineering Associates, Inc.
 5440 Beaumont Center Blvd., Suite 460
 Tampa, Florida 33634
 (813) 886-0111

PALM LAKES APARTMENT COMPLEX