

REPLAT OF TRACT 1
 OF REPLAT OF PARCEL F
 SOUTFIELDS - PHASE II OF PALM BEACH POLO
 AND COUNTRY CLUB - WELLINGTON COUNTRYPLACE - P.U.D.

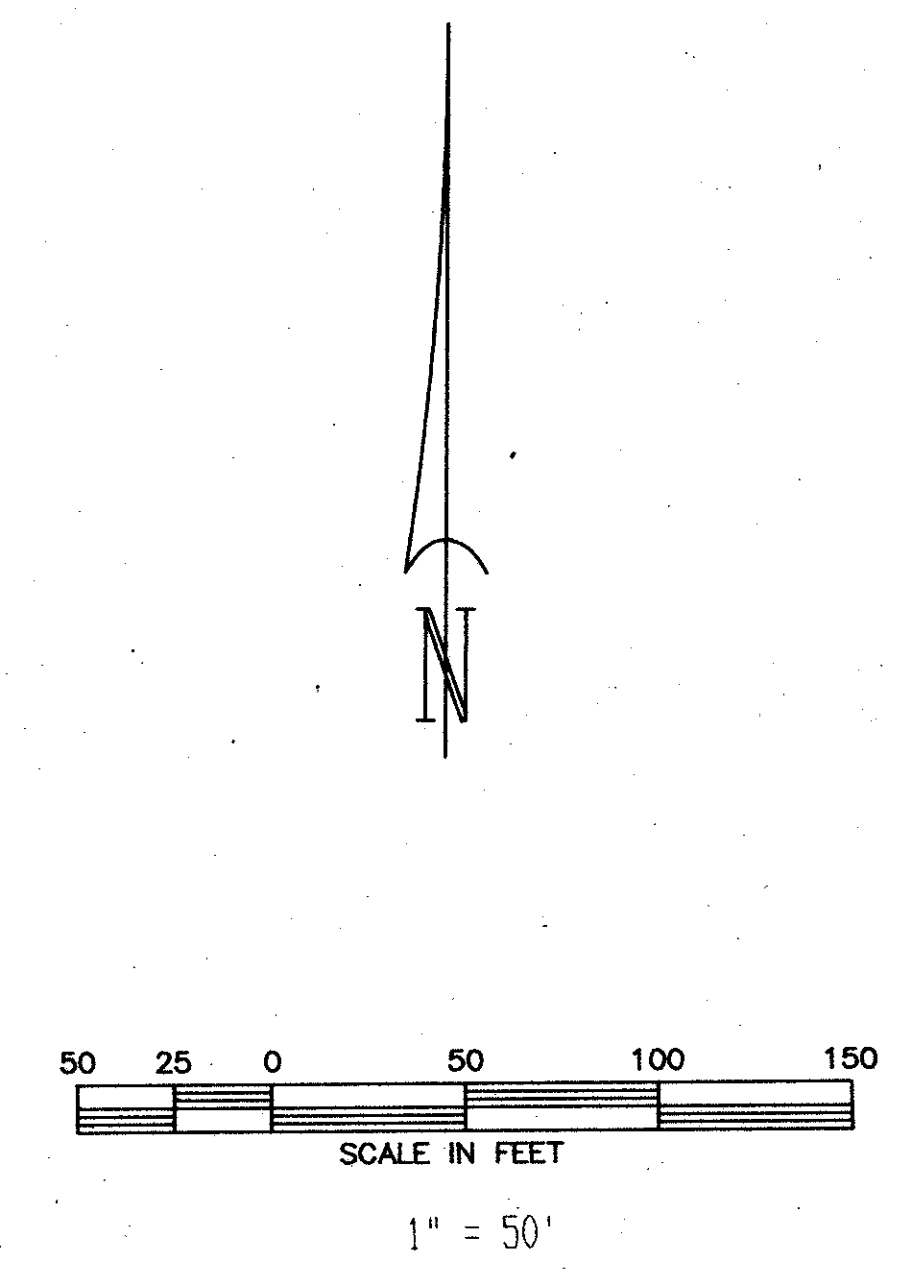
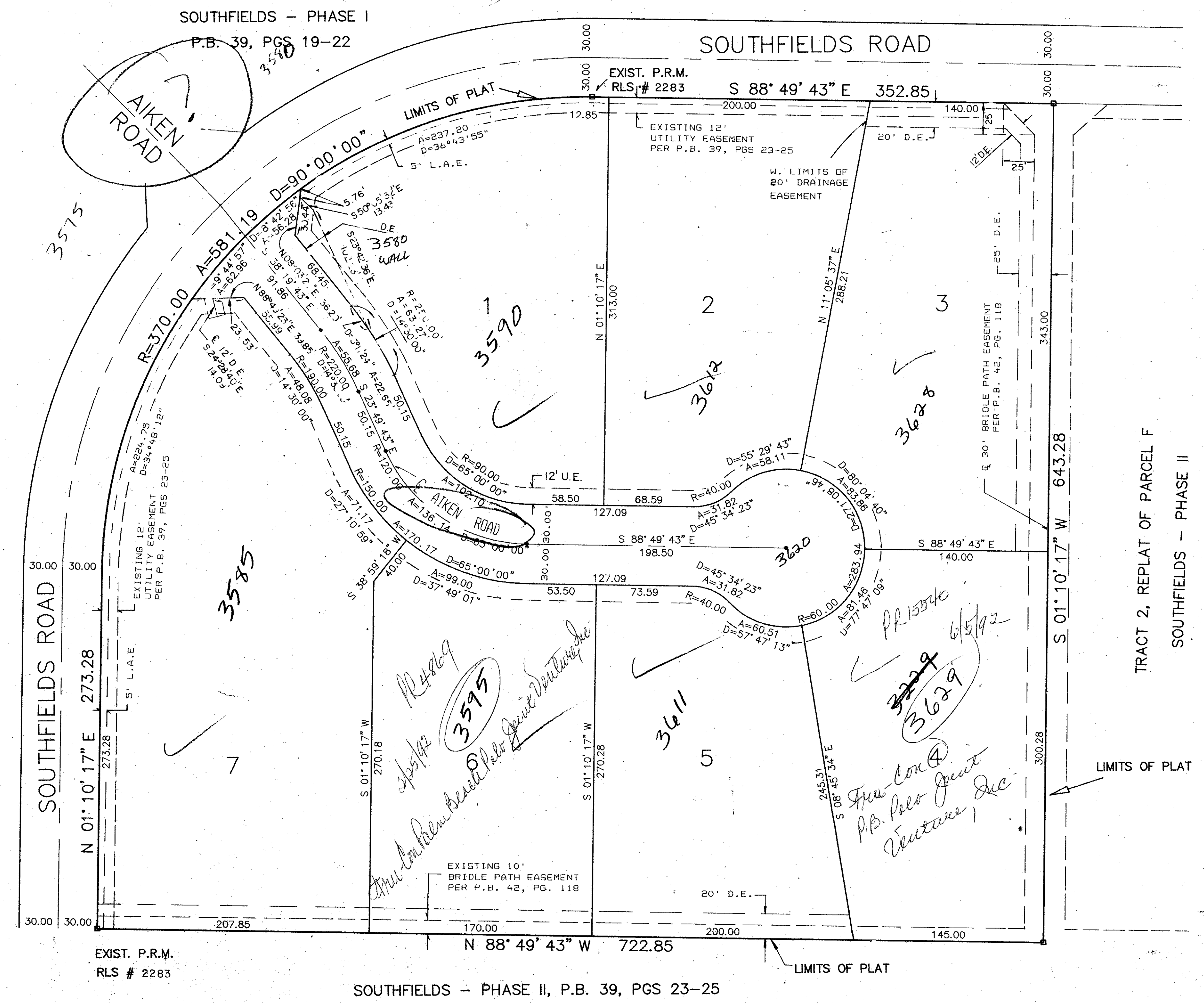
AS RECORDED IN P.B. 42, PG. 118, PUBLIC RECORDS OF PALM BEACH COUNTY, FLA.
 IN PART OF SECTION 21, TWP. 44 S., RGE. 41 E.

PALM BEACH COUNTY, FLORIDA

SHEET 2 OF 2 SHEETS

AUGUST 1989

NOTE:
 P.B. 42 PG. 118
 P.B. 39 PG. 22
 SHOW AIKEN COURT



SUBDIVISION * Southfields Phase II
 BOOK 00 of P.B. 42 PG. 118
 FLOOD ZONE A01 FLOOD MAP # 100-B
 QUAD # 73 ZONING RE
 SE 76-60 ZIP CODE 33414
 PUD NAME Wellington Country Club
 TAZ 728

0333-009
 Pet. 76-60

66/47

SCALE: SHOWN	NICK MILLER, INC. Land Surveying	DRAWN BY:
DATE: AUG 1989	Planning & Development Consultants	CHK:
REPLAT OF TRACT 1 OF REPLAT OF PARCEL F SOUTFIELDS - PHASE II OF PALM BEACH POLO AND COUNTRY CLUB - WELLINGTON COUNTRYPLACE - P.U.D.		
2560 RCA Blvd. Suite 105 Palm Beach Gardens, Florida 33410 (407) 827-2200		DRAWING NUMBER