

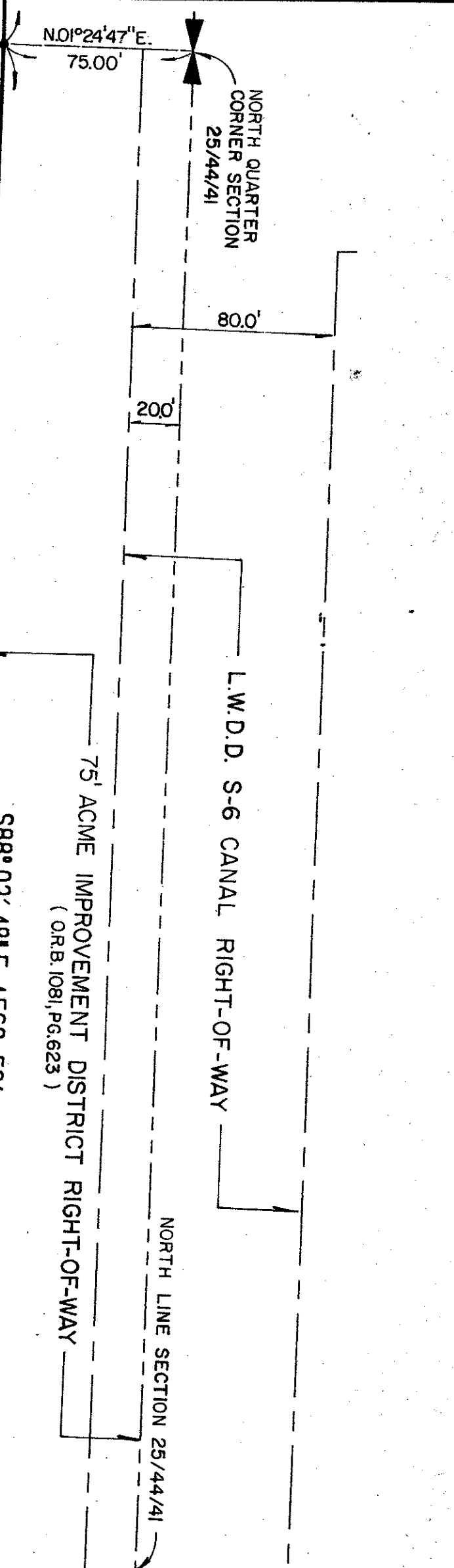
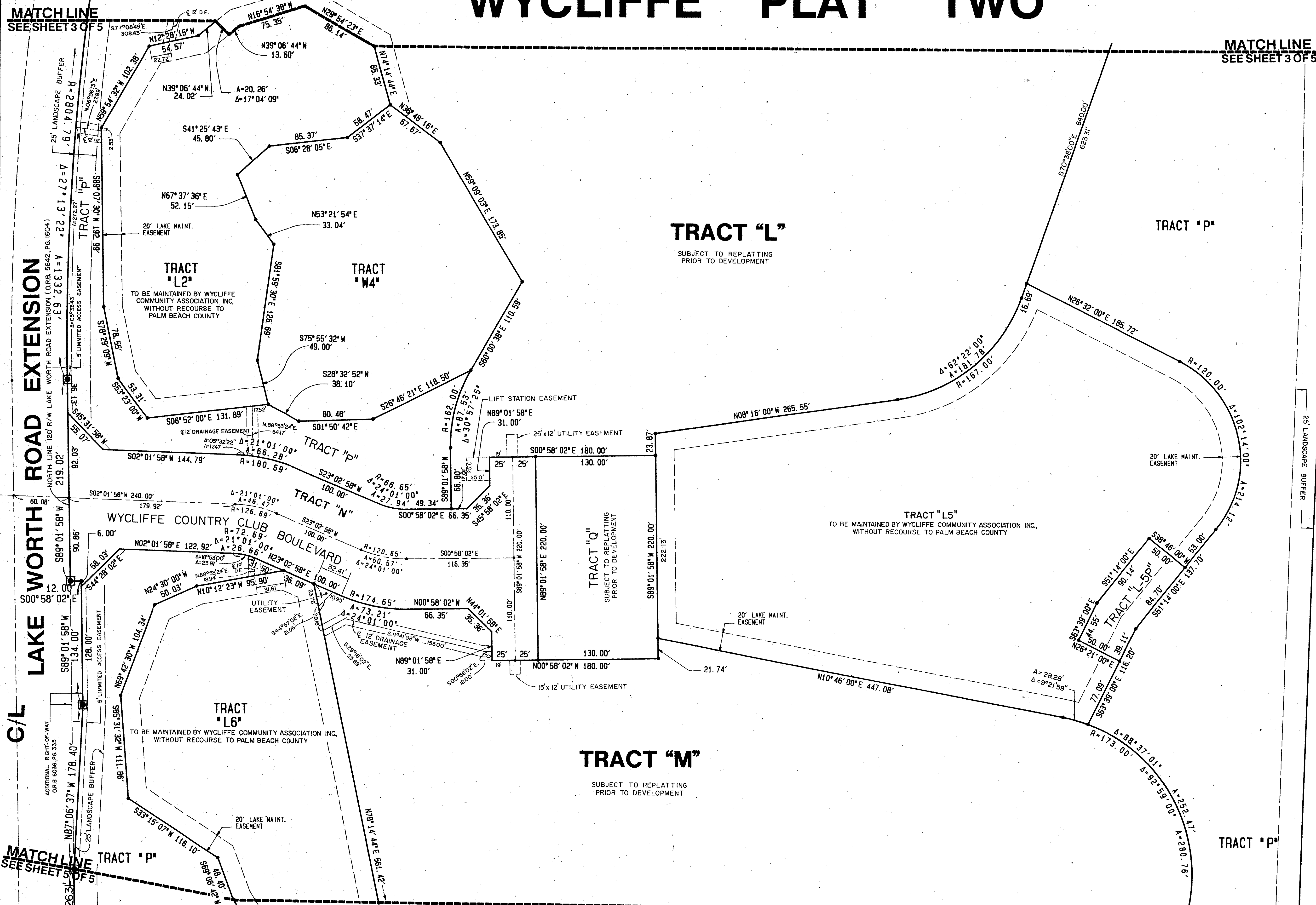
# WYCLIFFE PLAT TWO

State Of Florida )  
                          ss  
County Of Palm Beach

This Plat was filed for record at  
this day of \_\_\_\_\_  
A.D., 1989, and duly recorded  
in Plat Book \_\_\_\_\_ on  
Page \_\_\_\_\_ And \_\_\_\_\_

John B. Dunkle,  
Clerk of the Circuit Court.

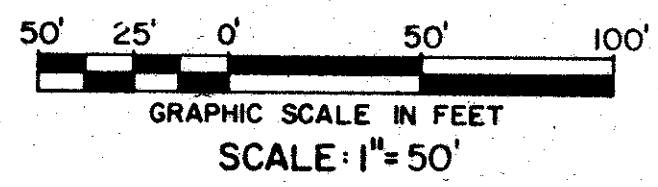
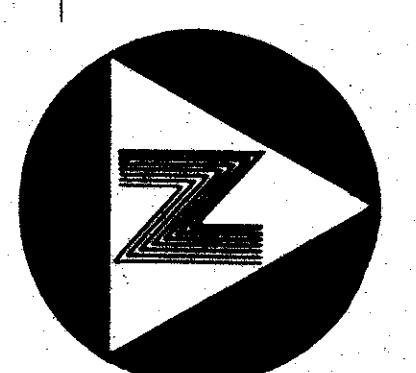
By: \_\_\_\_\_, Deputy Clerk



C/L

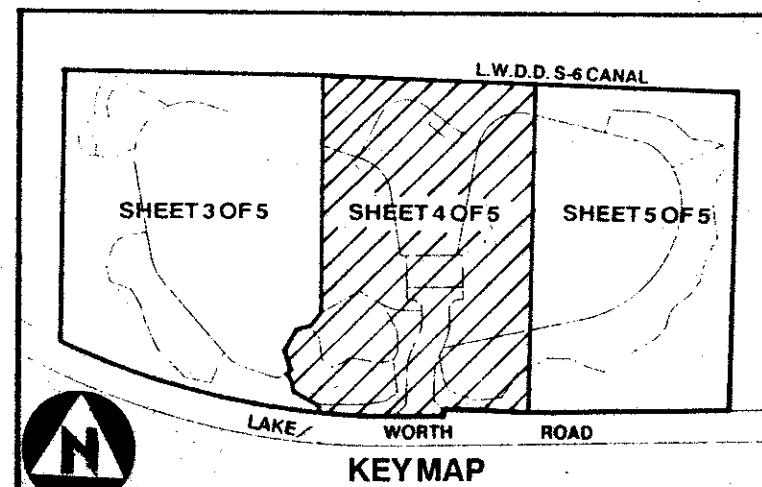
T&Z 736 + 737

SUBDIVISION: Wycliffe Plat 2  
 BOOK: 66  
 FLOOD ZONE: B  
 QUAD: 603  
 SE: 06-104  
 PUD NAME: 25/44/41



RECORDED SUBDIVISION SOUTH OF RIGHT-OF-WAY LAKE WORTH ROAD EXTENSION AS SHOWN HEREON IS WYCLIFFE PLAT ONE P.B. 62, P. 8-13

- Legend:**
- Indicates A Permanent Reference Monument #2424 (P.R.M.)
  - Indicates A Permanent Control Point #2424 (P.C.P.)



0520-008  
 Pet. 8/6-104  
 Allocation 0001  
 60/34

**BENCH MARK**  
 LAND SURVEYING & MAPPING, INC.  
 WEST PALM BEACH, FLORIDA - RIVIERA BEACH, FLORIDA

**RECORD PLAT**  
**WYCLIFFE PLAT TWO**

This instrument was prepared by Wm. R. Van Campen, R.L.S., in  
 and for the offices of Bench Mark Land Surveying & Mapping, Inc.,  
 4152 W. Blue Heron Boulevard Suite 121, Riviera Beach, Florida

OWN	CKD	DATE	W.C. NO.
SCALE	SIZE	P.B. P.	SHEET 4 OF 5