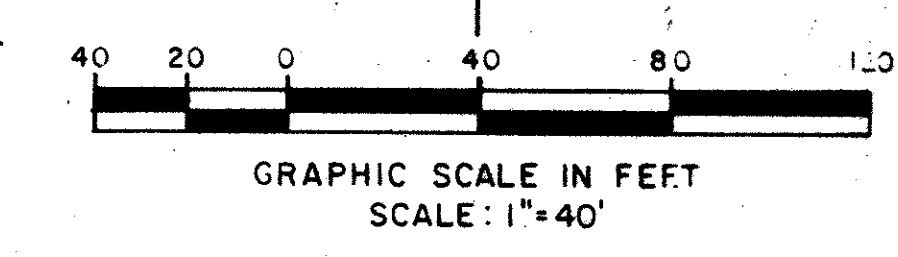
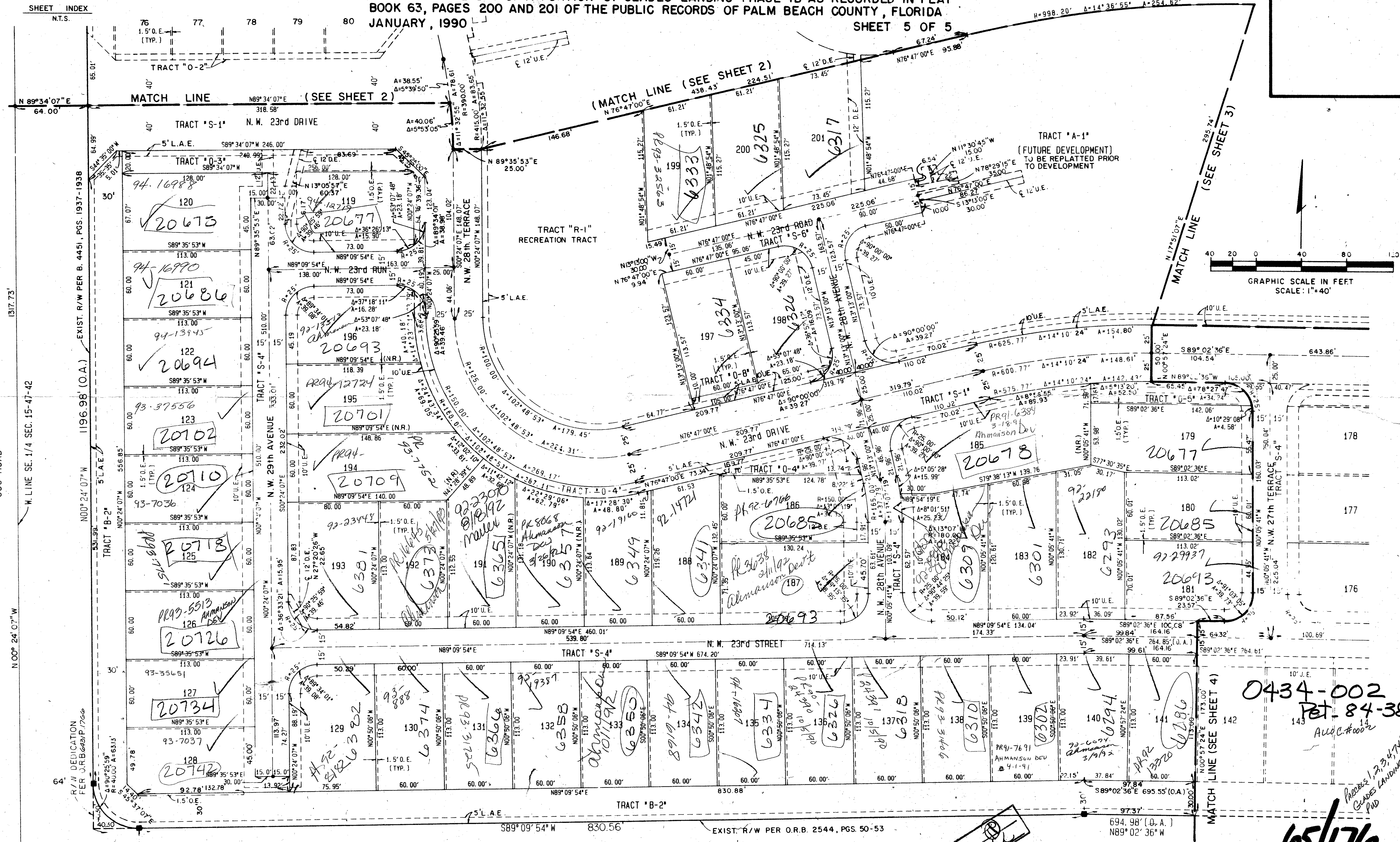
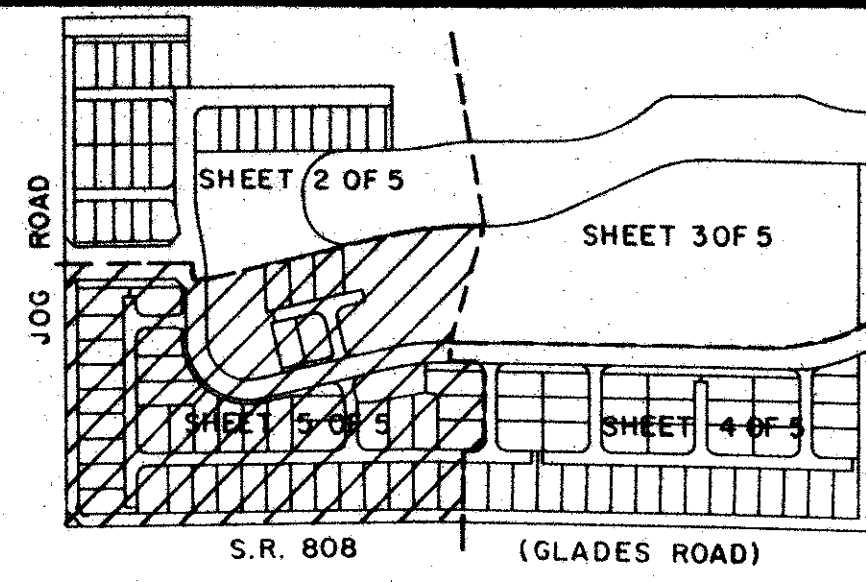


GLADES LANDING PLAT TWO

A PLANNED UNIT DEVELOPMENT

BEING A PLAT OF A PORTION OF THE S.E. 1/4 OF SECTION 15, TOWNSHIP 47 SOUTH, RANGE 42 EAST AND A REPLAT OF A PORTION OF GLADES LANDING PHASE 1B AS RECORDED IN PLAT BOOK 63, PAGES 200 AND 201 OF THE PUBLIC RECORDS OF PALM BEACH COUNTY, FLORIDA
JANUARY, 1990



SUBDIVISION - GLADES LANDING PLAT 2
BOOK 65 PAGE 176
PLANNED ZONE B
CITY OF PALM BEACH
CE 84-38
PUD NAME SAME

0434-002
Ret. 84-38
Alloc. # 0002

65/176

ADD. BY
CHECKED BY

METRIC ENGINEERING & SURVEYING
 ENGINEERS - SURVEYORS
 MIAMI - FORT LAUDERDALE
 WEST PALM BEACH - PANAMA CITY

**PLAT TWO
GLADES LANDING
SHEET 5 OF 5**

D.I.G.
C.A.D.D.
D.R.

STATE ROAD 808 (GLADES ROAD)