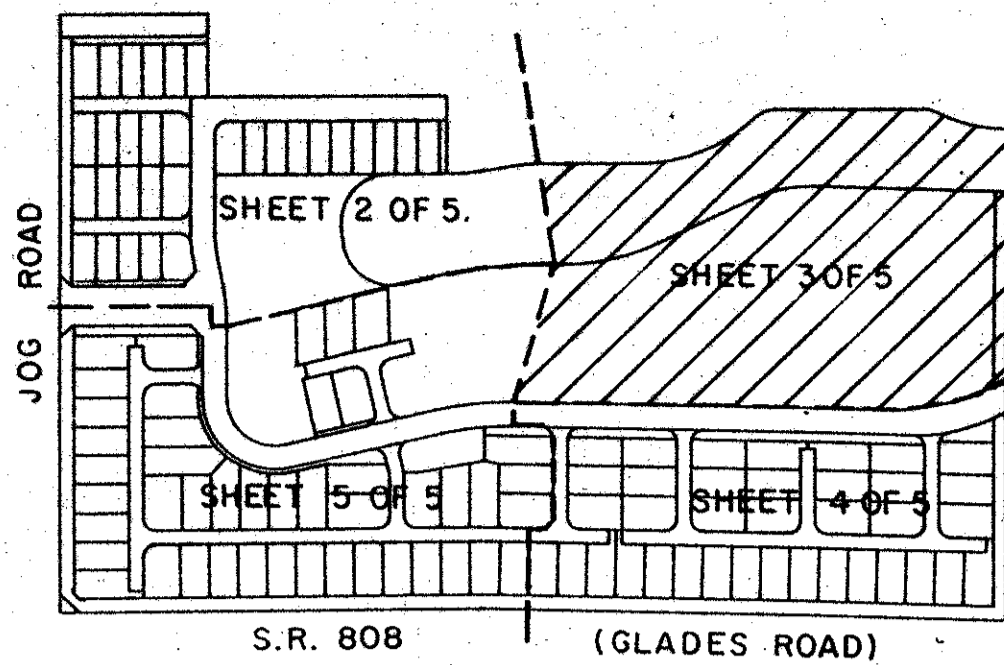


GLADES LANDING PLAT TWO

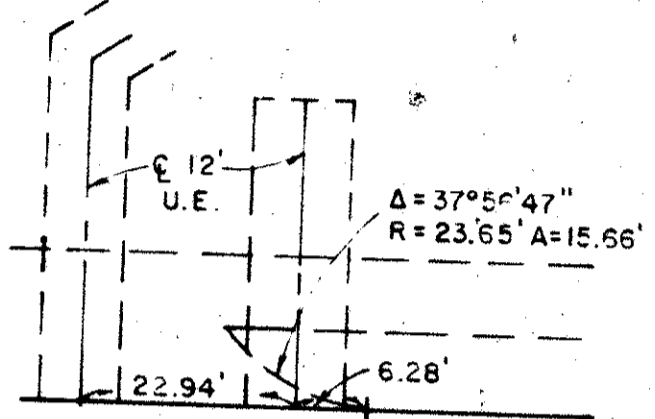
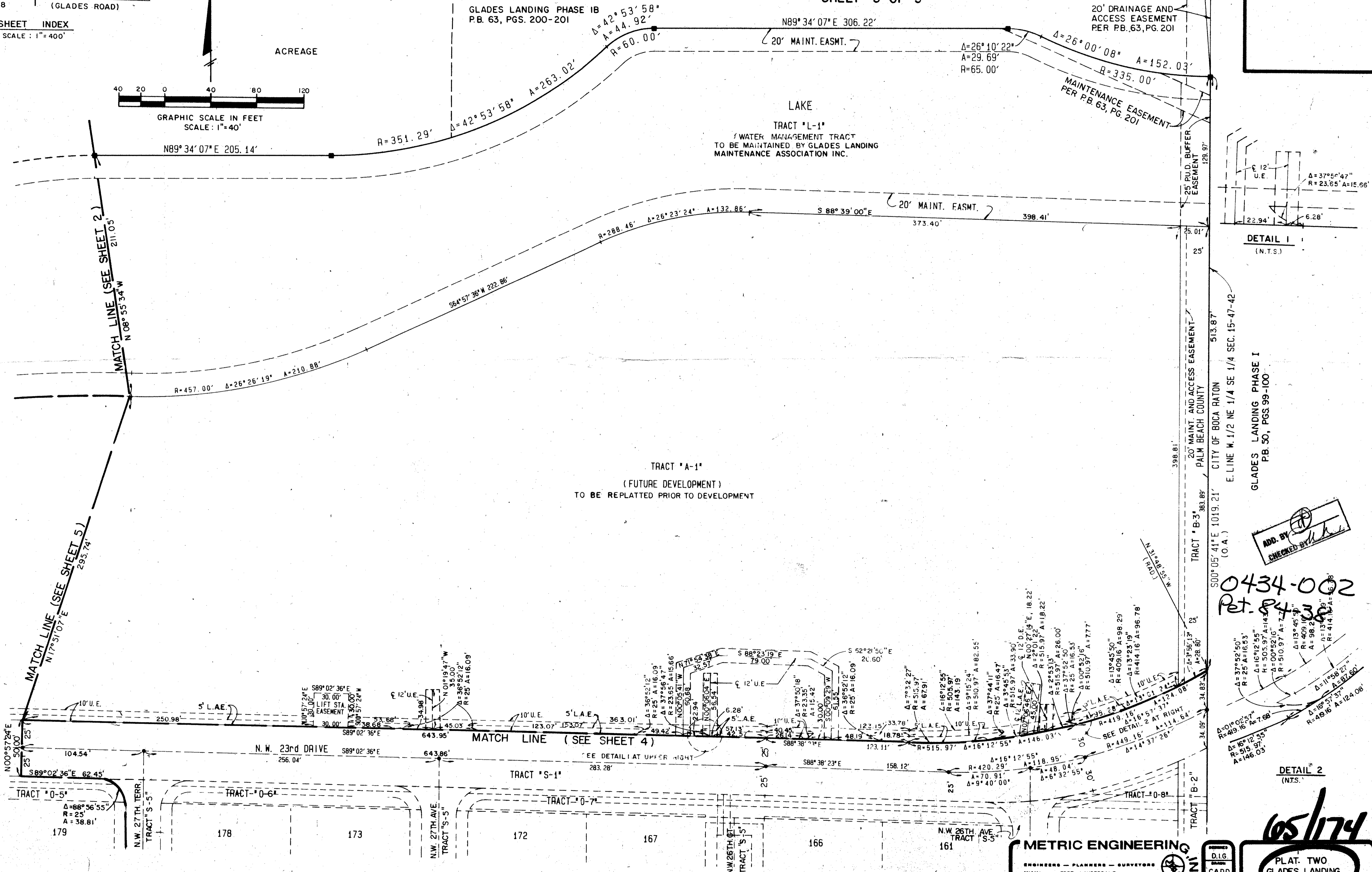
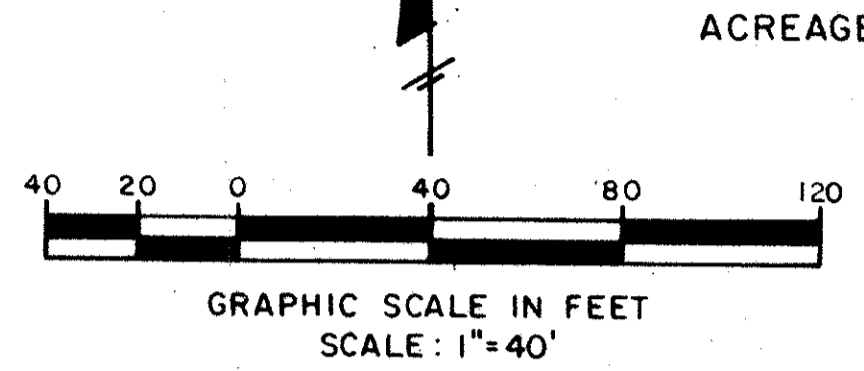
A PLANNED UNIT DEVELOPMENT

BEING A PLAT OF A PORTION OF THE S.E. 1/4 OF SECTION 15, TOWNSHIP 47 SOUTH, RANGE 42 EAST AND A REPLAT OF A PORTION OF GLADES LANDING PHASE 1B AS RECORDED IN PLAT BOOK 63, PAGES 200 AND 201 OF THE PUBLIC RECORDS OF PALM BEACH COUNTY, FLORIDA
JANUARY, 1990

SHEET 3 OF 5



SHEET INDEX
SCALE: 1"=400'

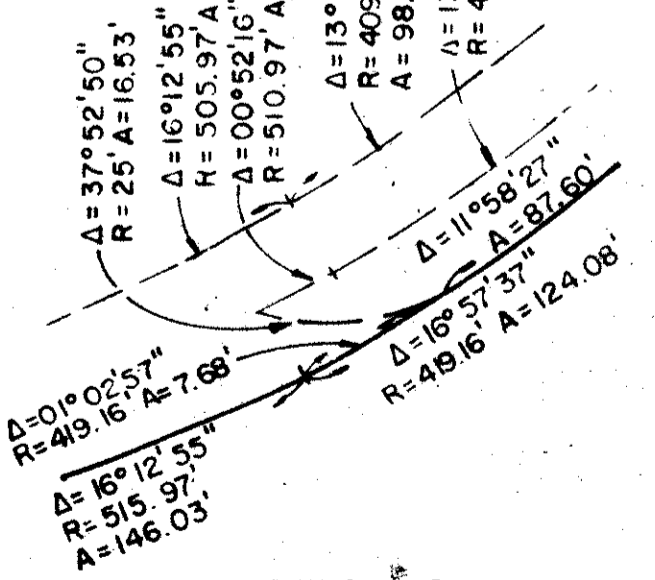


DETAIL 1 (N.T.S.)

GLADES LANDING PHASE I
P.B. 50, PGS. 99-100

ADD. BY
CHECKED BY *[Signature]*

0434-002
Ret. 84338



DETAIL 2 (N.T.S.)

SUBDIVISION - GLADES LANDING PLAT 2
BOOK 65
PAGE 174
FLOOD ZONE B
ZONING - RS
QUAD 38
SHEETS 84-88
PUB. NAME SAME

TAX 608

METRIC ENGINEERING
ENGINEERS - PLANNERS - SURVEYORS
MIAMI - FORT LAUDERDALE
WEST PALM BEACH - PANAMA CITY

D.I.G.
C.A.D.D.
D.R.

65/174
PLAT TWO
GLADES LANDING
SHEET 3 OF 5