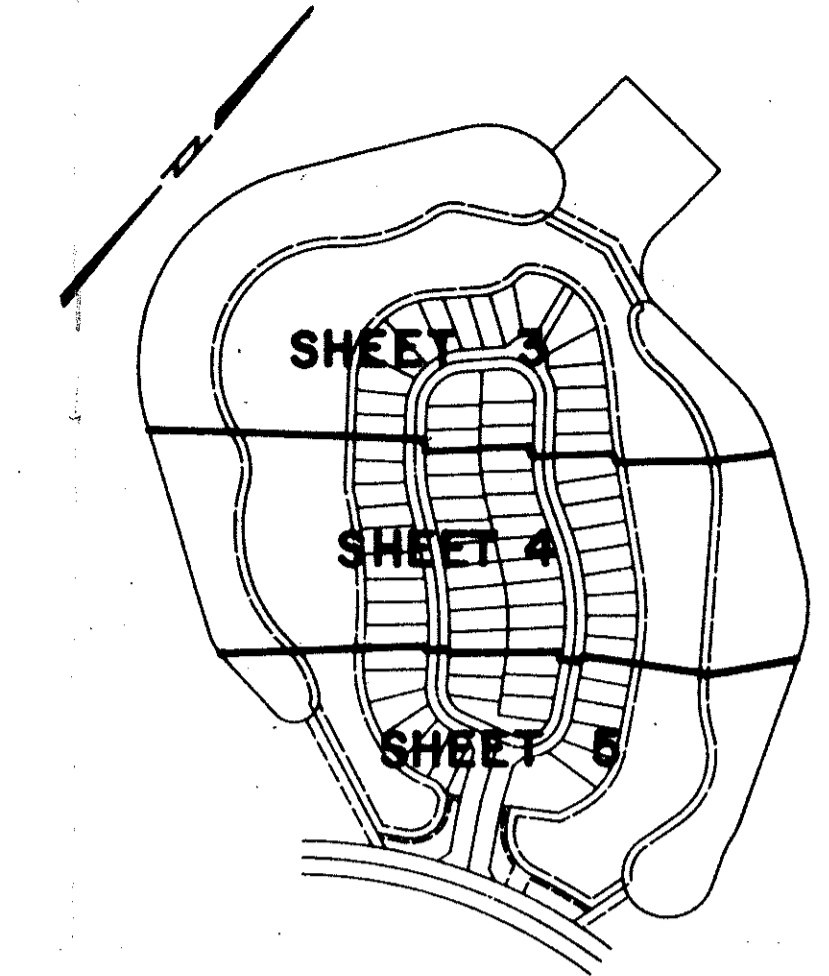


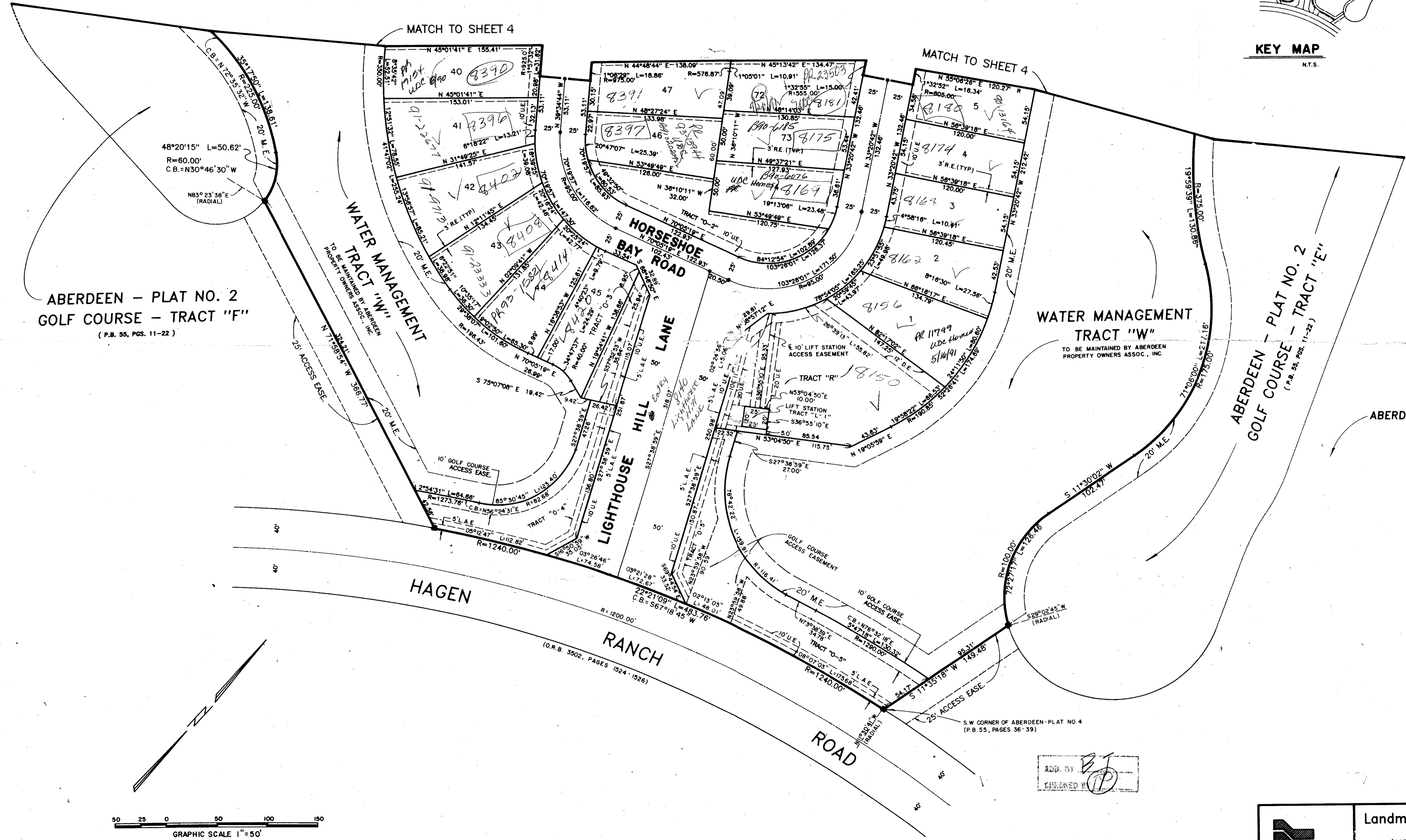
ABERDEEN - PLAT NO. 13

(A PLANNED UNIT DEVELOPMENT)
LYING IN SECTION 16, TOWNSHIP 45 SOUTH, RANGE 42 EAST,
BEING A REPLAT OF A PORTION OF ABERDEEN - PLAT NO. 2, AS RECORDED IN PLAT BOOK
55, PAGES 11 THRU 22, OF THE PUBLIC RECORDS OF PALM BEACH COUNTY, FLORIDA.
SHEET 5 OF 5
OCTOBER, 1989



KEY MAP
N.T.S.

STATE OF FLORIDA
COUNTY OF PALM BEACH
This Plat was filed for record at _____
M. this day of _____, 19____
and duly recorded in Plat Book No. _____
on Page _____
John B. Dunkle, Clerk of the Circuit Court
By _____ D.C.

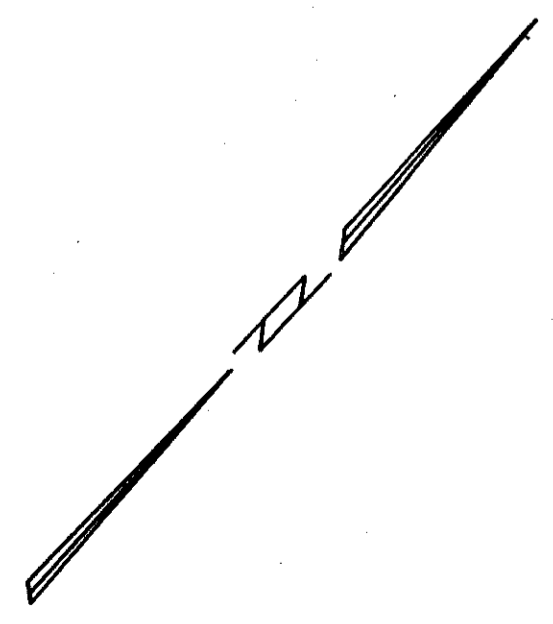
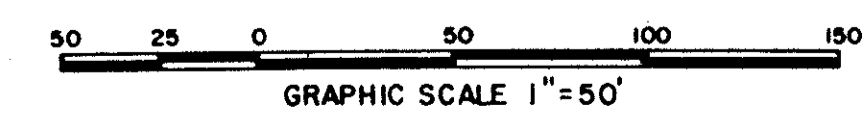


ABERDEEN - PLAT NO. 2
GOLF COURSE - TRACT "F"
(P.B. 55, PGS. 11-22)

WATER MANAGEMENT
TRACT "W"
TO BE MAINTAINED BY ABERDEEN
PROPERTY OWNERS ASSOC., INC.

ABERDEEN - PLAT NO. 2
GOLF COURSE - TRACT "E"
(P.B. 55, PGS. 11-22)

ABERDEEN - PLAT NO. 4
(P.B. 55, PGS. 36-39)



APP. BY [Signature]
DATE [Date]

SUBDIVISION & REDEVELOPMENT PLAT NO. 13
BOOK 65 PAGE 170
PLANNED MAP # 125A
TOWN OF PALM BEACH
E 80-153
PUB. NAME - TAZ 443

Pet. 80-153
0270-015
65/120

Landmark Surveying & Mapping Inc.
1850 FCREST HILL BOULEVARD
PH. (407)433-5405 SUITE 100 W.P.B. FLORIDA
ABERDEEN - PLAT NO. 13