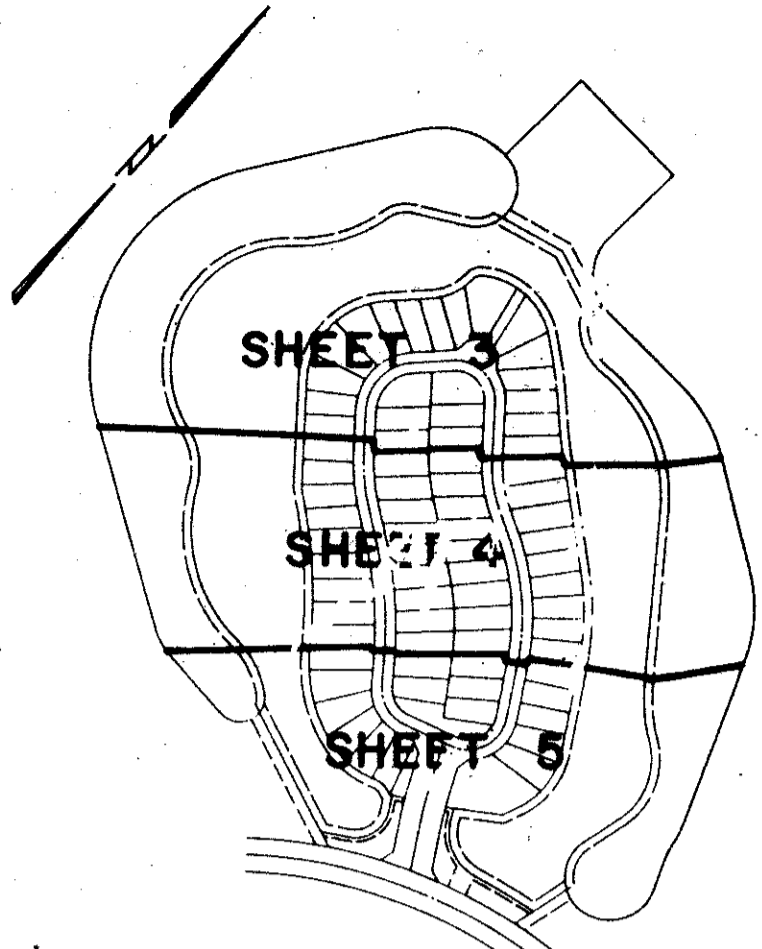


(A PLANNED UNIT DEVELOPMENT)
ABERDEEN - PLAT NO. 13

LYING IN SECTION 16, TOWNSHIP 45 SOUTH, RANGE 42 EAST,
 BEING A REPLAT OF A PORTION OF ABERDEEN - PLAT NO. 2, AS RECORDED IN PLAT BOOK
 55, PAGES 11 THRU 22, OF THE PUBLIC RECORDS OF PALM BEACH COUNTY, FLORIDA.
 SHEET 3 OF 5
 OCTOBER, 1989

118



KEY MAP
 N.T.S.

ABERDEEN - PLAT NO. 8
 (P.B. 59, PGS. 181-183)

ABERDEEN - PLAT NO. 2
 GOLF COURSE - TRACT "F"
 (P.B. 55, PGS. 11-22)

WATER MANAGEMENT TRACT "W"
 TO BE MAINTAINED BY ABERDEEN
 PROPERTY OWNERS ASSOC., INC.

ABERDEEN - PLAT NO. 4
 (P.B. 55, PGS. 36-39)

ABERDEEN - PLAT NO. 2
 GOLF COURSE - TRACT "E"
 (P.B. 55, PGS. 11-22)

N.E. CORNER OF
 ABERDEEN - PLAT NO. 8
 (P.B. 59, PAGES 181-183)

STATE OF FLORIDA
 COUNTY OF PALM BEACH
 This Plat was filed for record at
 M. this day of 19
 and duly recorded in Plat Book No.
 on Page
 John B. Dunkle, Clerk of the Circuit Court
 By D.C.

P.O.B.
 N.W. CORNER OF ABERDEEN - PLAT NO. 4
 (P.B. 55, PAGES 36-39)

GRAPHIC SCALE 1"=50'

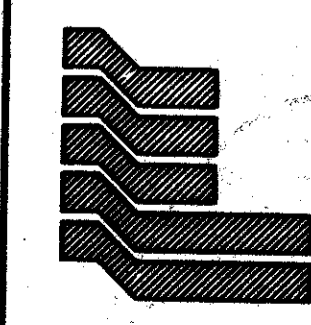
Det
80-153
0270-015

65/118

SUBDIVISION: ABERDEEN PLAT NO. 13
 BOOK: 65
 FLOOD ZONE: B
 FLOOD MAP: RSA
 QUAD: 49
 ZONING: RS/SE
 SE: 80-153
 PUD NAME:

TAB 443

ADD. BY *BT*
 CHECKED BY *nk*



Landmark Surveying & Mapping Inc.
 1850 FOREST HILL BOULEVARD
 PH. (407) 433-5405 SUITE 100 W.P.B. FLORIDA

ABERDEEN - PLAT NO. 13