

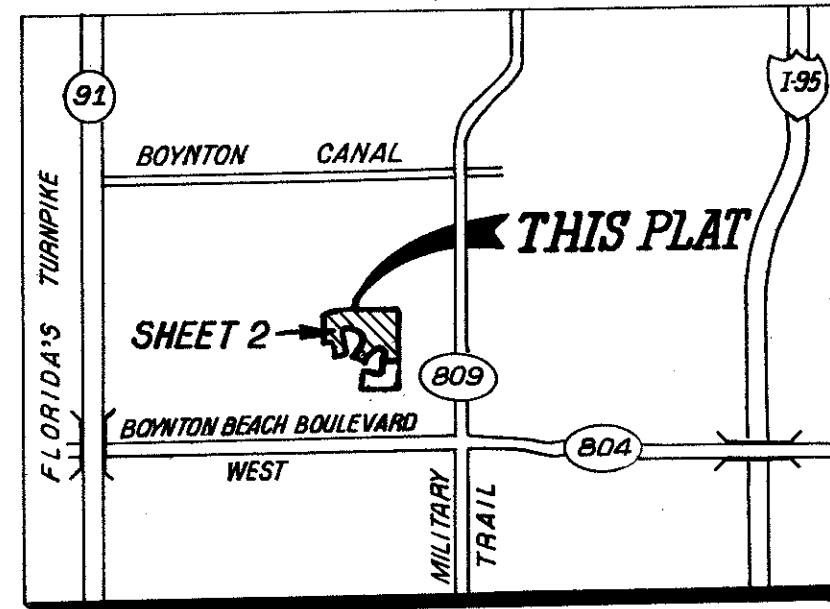
SUN VALLEY EAST PHASE II

SUN VALLEY P.U.D.

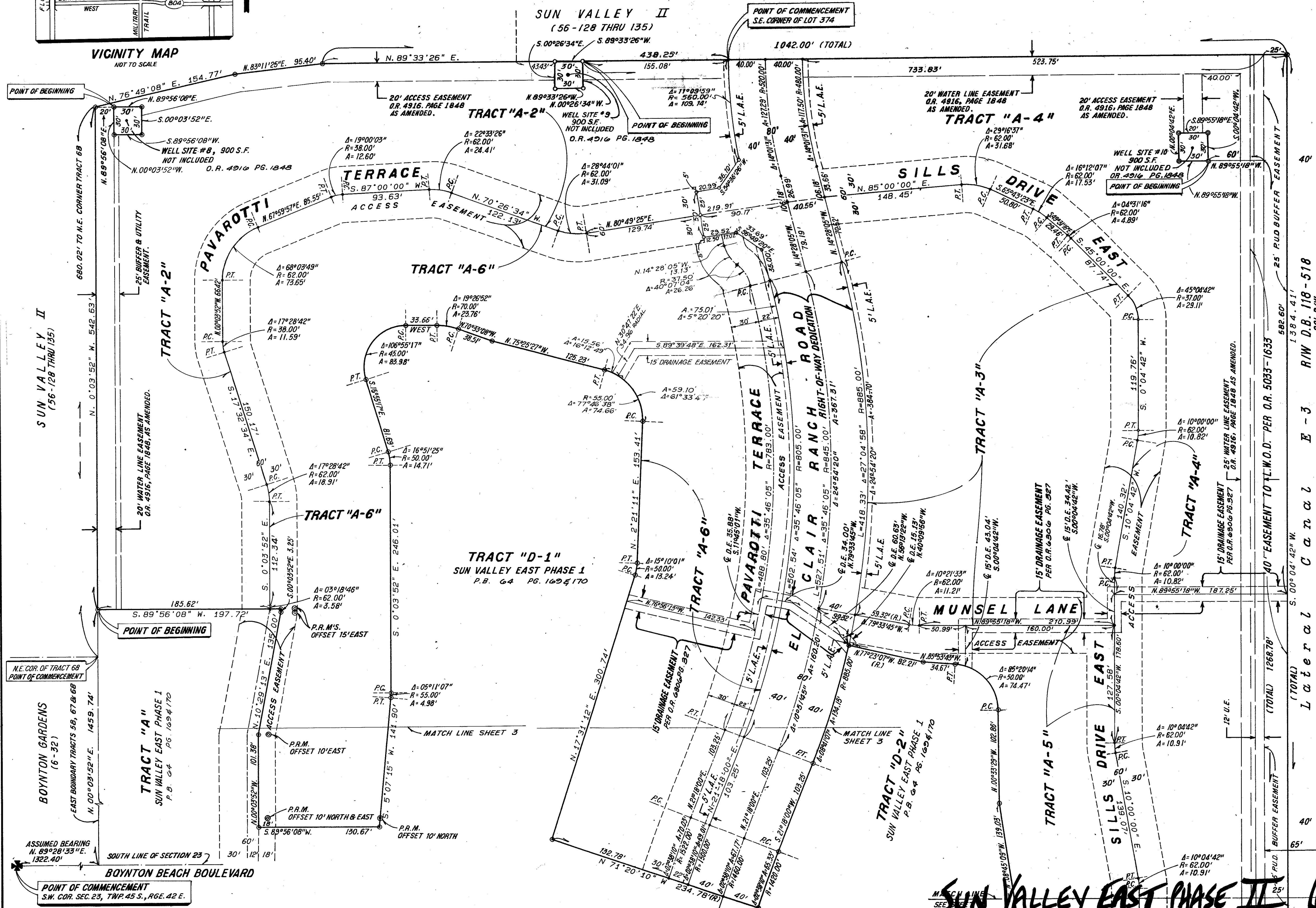
A PLAT OF A PORTION OF SECTION 23, TOWNSHIP 45 SOUTH, RANGE 42 EAST, INCLUDING A REPLAT OF A PORTION OF BOYNTON GARDENS (6-32) PALM BEACH COUNTY, FLORIDA

C.C. WINNINGHAM CORPORATION 1040 N.E. 45TH STREET OAKLAND PARK, FLORIDA, 33334
SCALE: 1" = 50' AUGUST, 1989.

SHEET 2 OF 3



VICINITY MAP NOT TO SCALE



Ret. 85-162
0498-008

SUN VALLEY EAST PHASE II 05/110

Handwritten notes and stamps in the bottom left corner, including 'TRAZ 444', 'RS', and '05-162'.

