

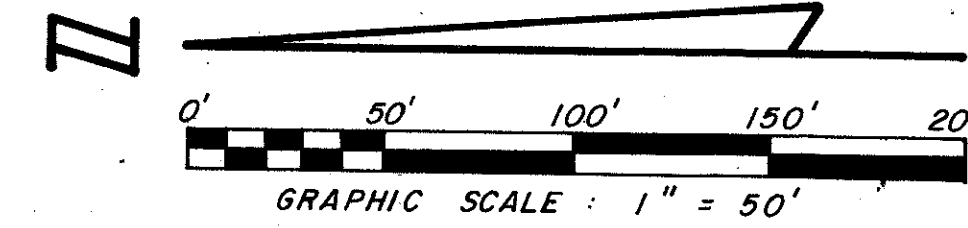
LANTANA PINES - PLAT NO. 3

SPORTSMEN'S CLUB - P.U.D.

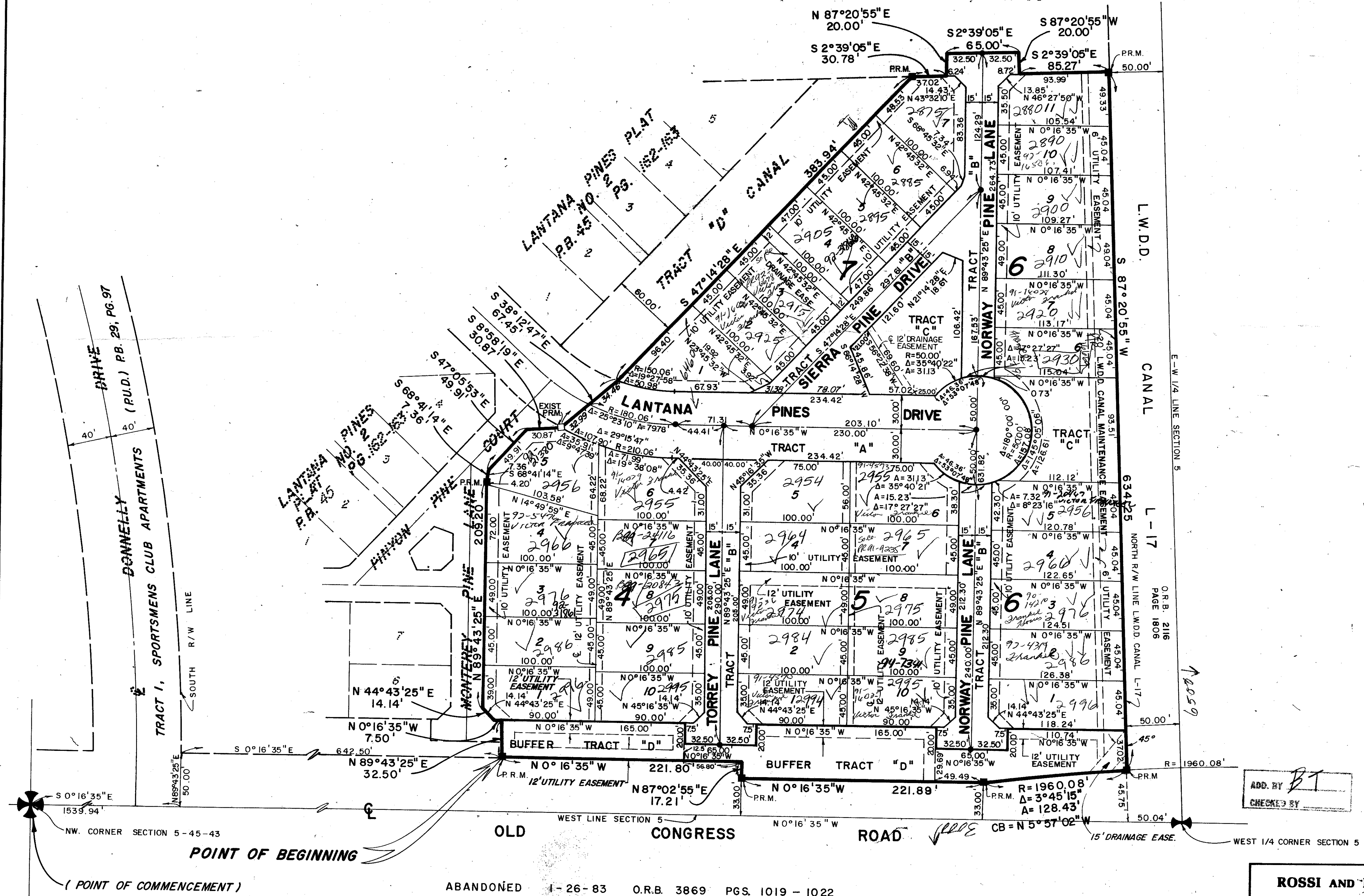
IN SECTION 5, TOWNSHIP 45 SOUTH, RANGE 43 EAST
PALM BEACH COUNTY, FLORIDA

BEING A REPLAT OF A PORTION OF LANAIR PARK AS RECORDED IN PLAT BOOK 21,
PAGE 58, PUBLIC RECORDS OF PALM BEACH COUNTY, FLORIDA

STATE OF FLORIDA }
COUNTY OF PALM BEACH } ss
This Plat was filed for record at _____ M.
this _____ day of _____
19 _____, and duly recorded in Plat Book No. _____
on page _____
JOHN B. DUNKLE, Clerk Circuit Court
By _____, D.C.



LANAIR PARK P.B. 21, PG. 58



31-014

Pet. 86.31
0311-004

ADD. BY BT
CHECKED BY

THIS INSTRUMENT WAS PREPARED BY JOSEPH M. TUCKER IN THE OFFICES OF ROSSI AND MALAVASI ENGINEERS, INC., 1678 PALM BEACH LAKES BOULEVARD, WEST PALM BEACH, FLORIDA 33411
PHONE: 737-6546.

65/95

ROSSI AND MALAVASI ENGINEERS, INC. WEST PALM BEACH, FLORIDA		LANTANA PINES PLAT NO. 3 IN 2 SHEETS SHEET NO. 2	
Date	MAY, 1989	Designed	R. ANDERSON
Drawn	T.J. CURBELO	Scale	1" = 50'
Approved		Job No.	
Checked		File No.	
			Sheet 2 of 2

LANTANA PINES - PLAT 3
 65
 AS-1
 86-31
 SPORTSMEN'S CLUB - P.U.D.

TAR 408