

LEXINGTON HOMES ESTATES P.R.D.

BEING A REPLAT OF A PORTION OF LOTS 2 THROUGH 6 AND LOTS 11 THROUGH 15, INCLUSIVE,
AS SHOWN ON THE PLAT OF THE FLORIDA FRUIT LANDS COMPANY'S SUBDIVISION NO. 2
RECORDED IN PLAT BOOK 1 PAGE 102. TOGETHER WITH THE VACATED ROAD RIGHT-OF-WAY
LYING TO THE WEST, AS RECORDED IN O.R. BOOK 1841, PAGES 1960 THROUGH 1963,
AT THE PUBLIC RECORDS OF PALM BEACH COUNTY, FLORIDA. SITUATED IN
SECTION 25, TOWNSHIP 47 SOUTH, RANGE 41 EAST, PALM BEACH COUNTY, FLORIDA.

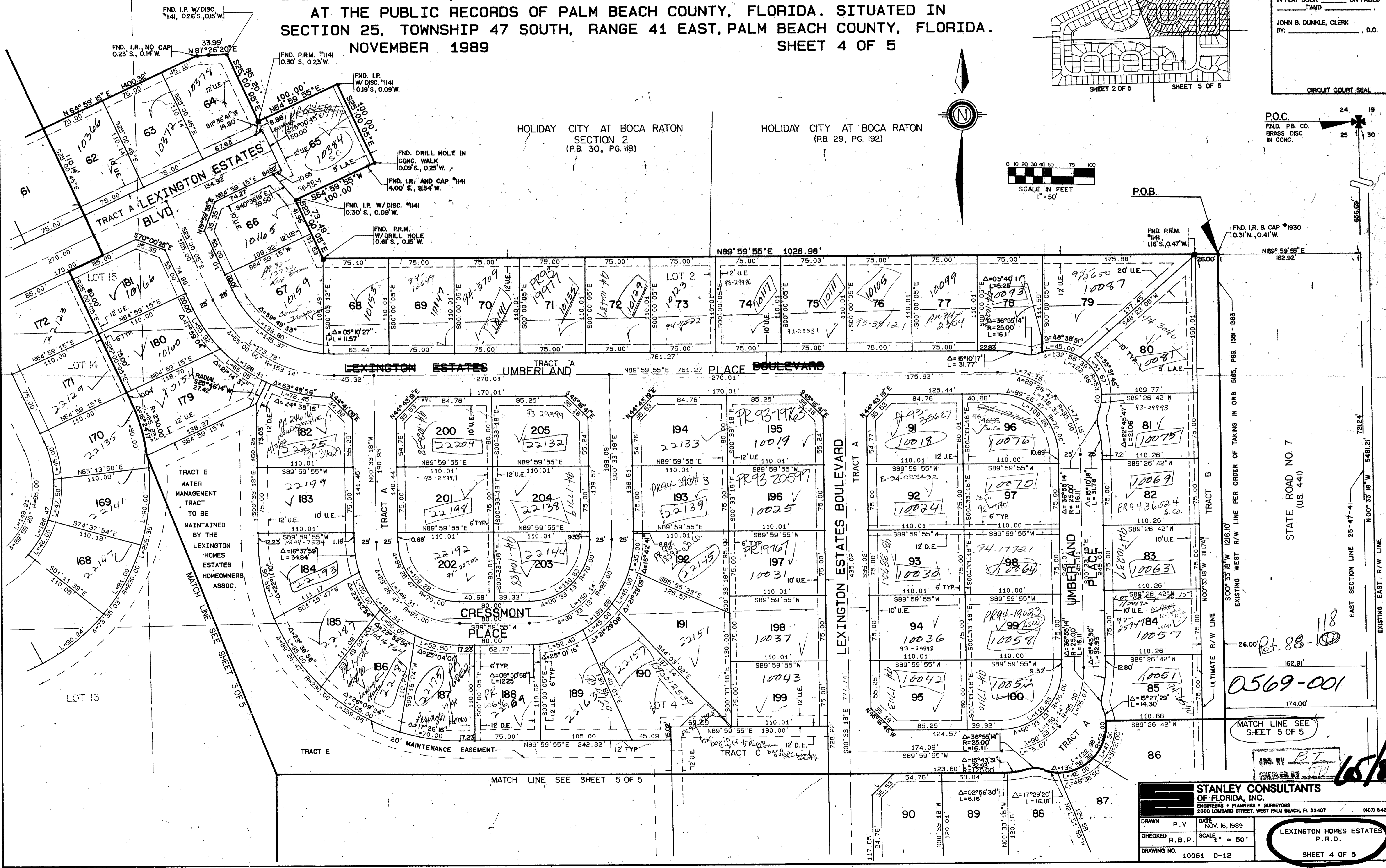
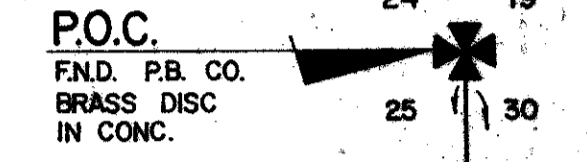
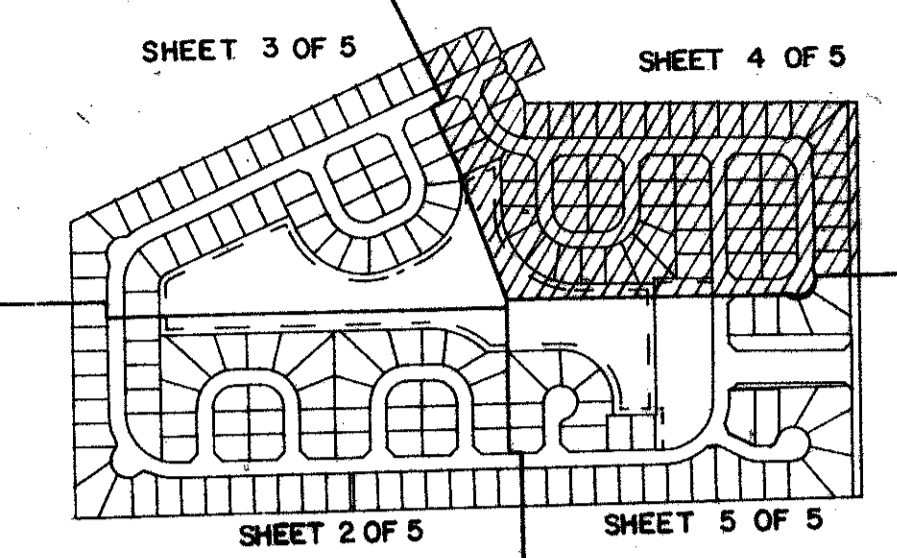
NOVEMBER 1989

SHEET 4 OF 5

0569-001

81

STATE OF FLORIDA
COUNTY OF PALM BEACH
THIS PLAT WAS FILED FOR
RECORD THIS DAY OF
AD, 1989 AND DULY RECORDED
IN PLAT BOOK ON PAGES
AND
JOHN B. DUNKLE, CLERK
BY: _____, D.C.



SUBDIVISION * LEXINGTON HOMES ESTATES
P.R.D. PAGE 81
BLOCK 65
PLAT BOOK 6
DRAWN BY R.S.
CHECKED BY B.P.
DATE NOV. 16, 1989
DRAWING NO. 10061 D-12

STANLEY CONSULTANTS
OF FLORIDA, INC.
ENGINEERS * PLANNERS * SURVEYORS
2000 LOMBARD STREET, WEST PALM BEACH, FL 33407 (407) 842-7444
DRAWN P.V. DATE NOV. 16, 1989
CHECKED R.B.P. SCALE 1" = 50'
DRAWING NO. 10061 D-12

LEXINGTON HOMES ESTATES
P.R.D.
SHEET 4 OF 5

0569-001
Pet. 88-118

65/80