

SAN MICHEL OF THE POLO CLUB

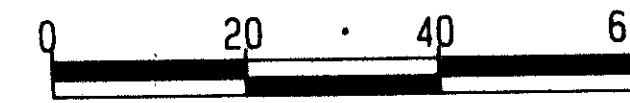
A PART OF THE POLO CLUB P.O.D.

BEING A REPLAT OF A PORTION OF TRACT I, "THE POLO CLUB PLAT III" (P.B. 59, PGS. 110-112)
AND PART OF SECTION 27, TOWNSHIP 46 SOUTH, RANGE 42 EAST
PALM BEACH COUNTY, FLORIDA

IN 8 SHEETS

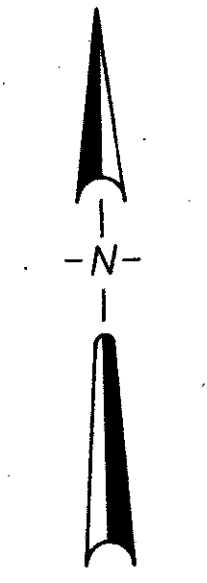
SHEET 4 OF 8

LANGAN ENGINEERING ASSOCIATES, INC.
WEST PALM BEACH, FLORIDA
AUGUST 1989

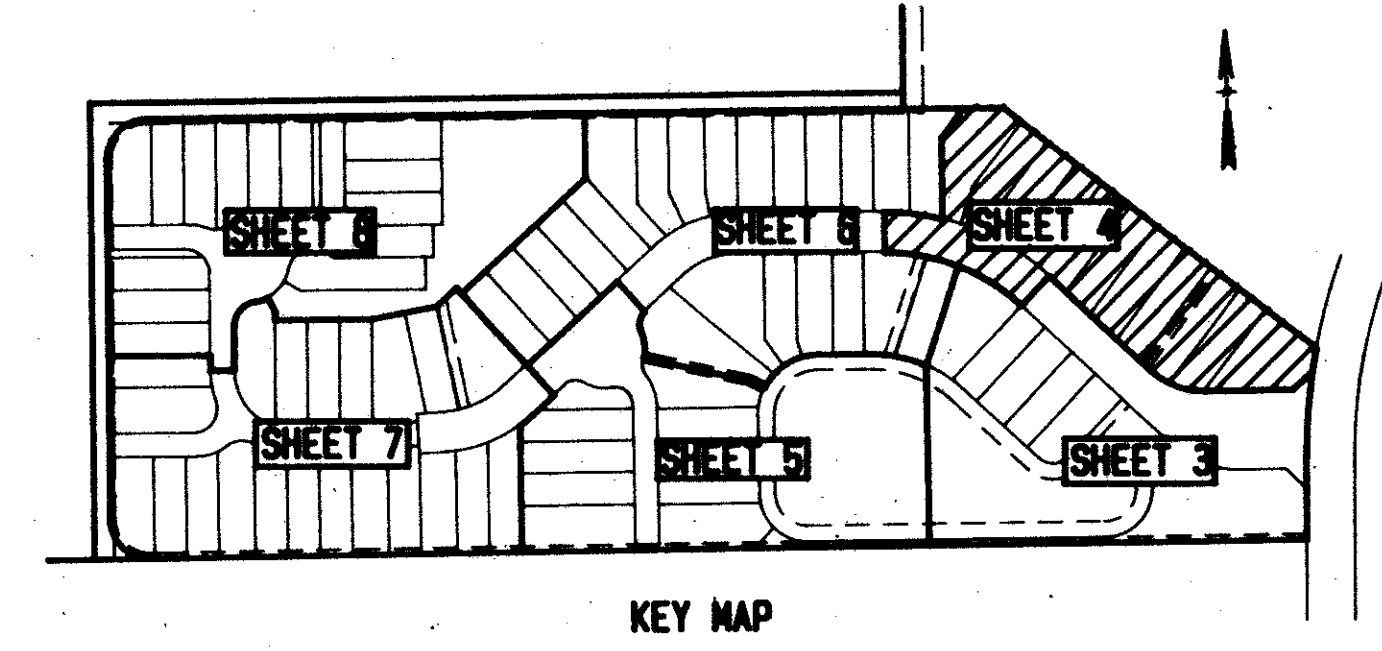


STATE OF FLORIDA
COUNTY OF PALM BEACH
This plat was filed for
record at _____ M., this _____ day
of _____ 198____ and duly
recorded in Plat Book no. _____
on Pages _____ through _____
JOHN B. DUNKLE
Clerk Circuit Court
By: _____ D.C.

ADD. BY *BT*
CHECKED BY *BT*



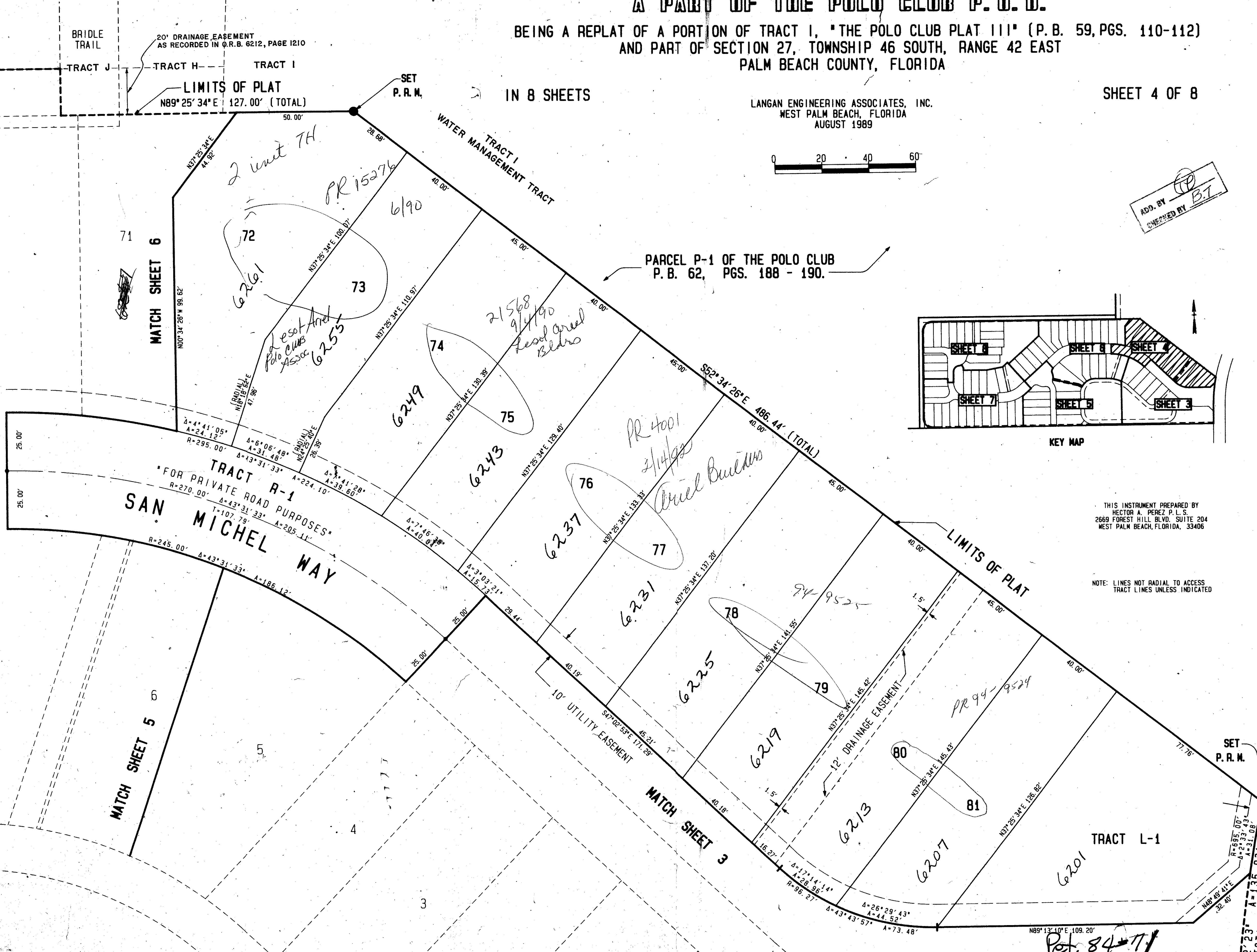
SCALE 1"=20'



KEY MAP

THIS INSTRUMENT PREPARED BY
HECTOR A. PEREZ P.L.S.
2669 FOREST HILL BLVD. SUITE 204
WEST PALM BEACH, FLORIDA, 33406

NOTE: LINES NOT RADIAL TO ACCESS
TRACT LINES UNLESS INDICATED



SUBMISSION * San Michel of the Polo Club
BOOK 64 PAGE 127
FLOOR MAP #257A
ZONING RS
QUAD 37
SE 84-71
PUD NAME San Michel of the Polo Club
2/12/89

COMPUTED MAY 1989
DRAWN CK.
CHECKED HWP.
COMMENTS JWB
APPROVED
REVISION

SAN MICHEL OF THE POLO CLUB

0436-033

64/127

TRADITIONS BOULEVARD
TRACT II
TRACT L-1
TRACT I
TRACT H
TRACT J