

# COCOA PINE ESTATES

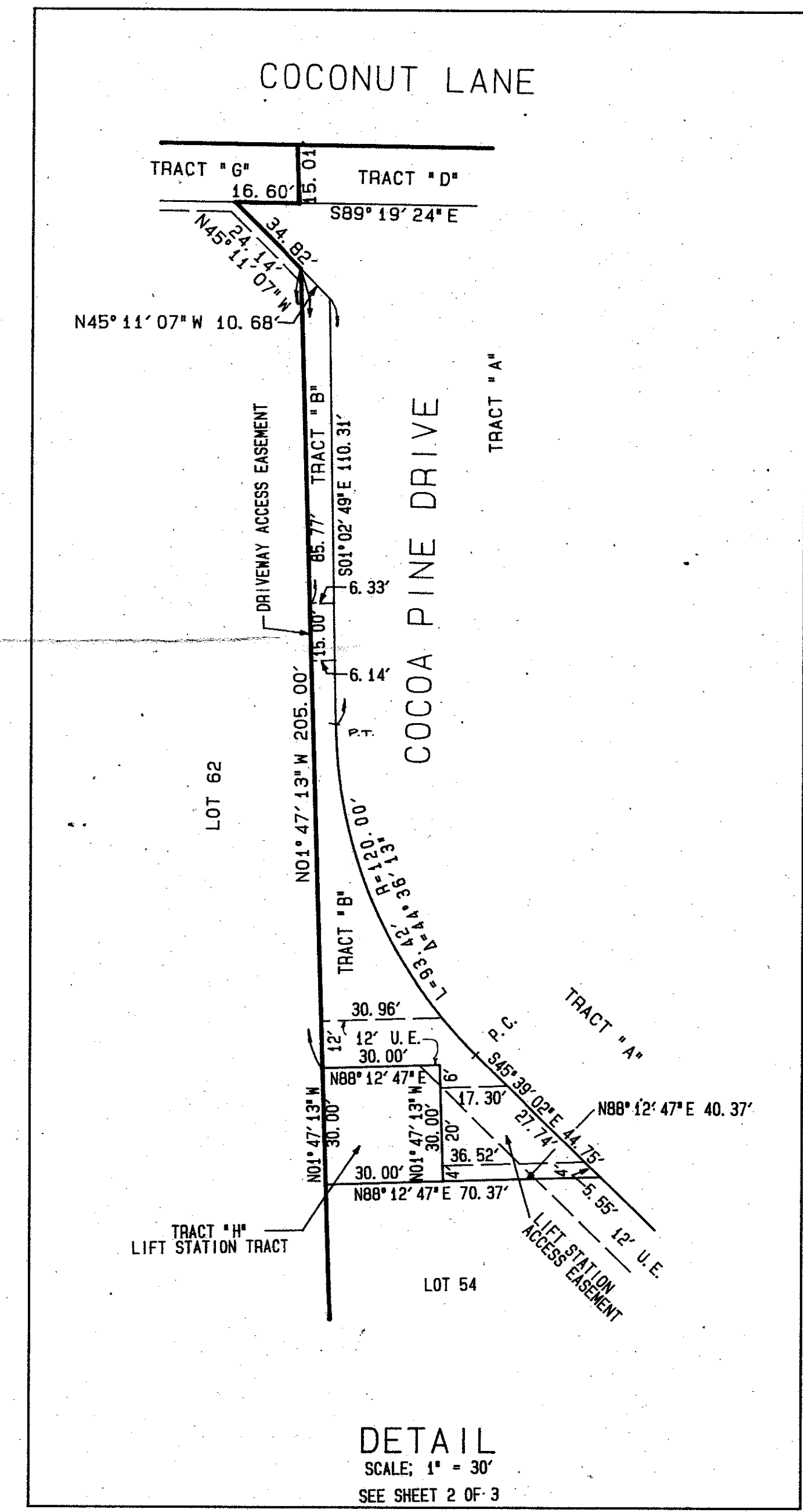
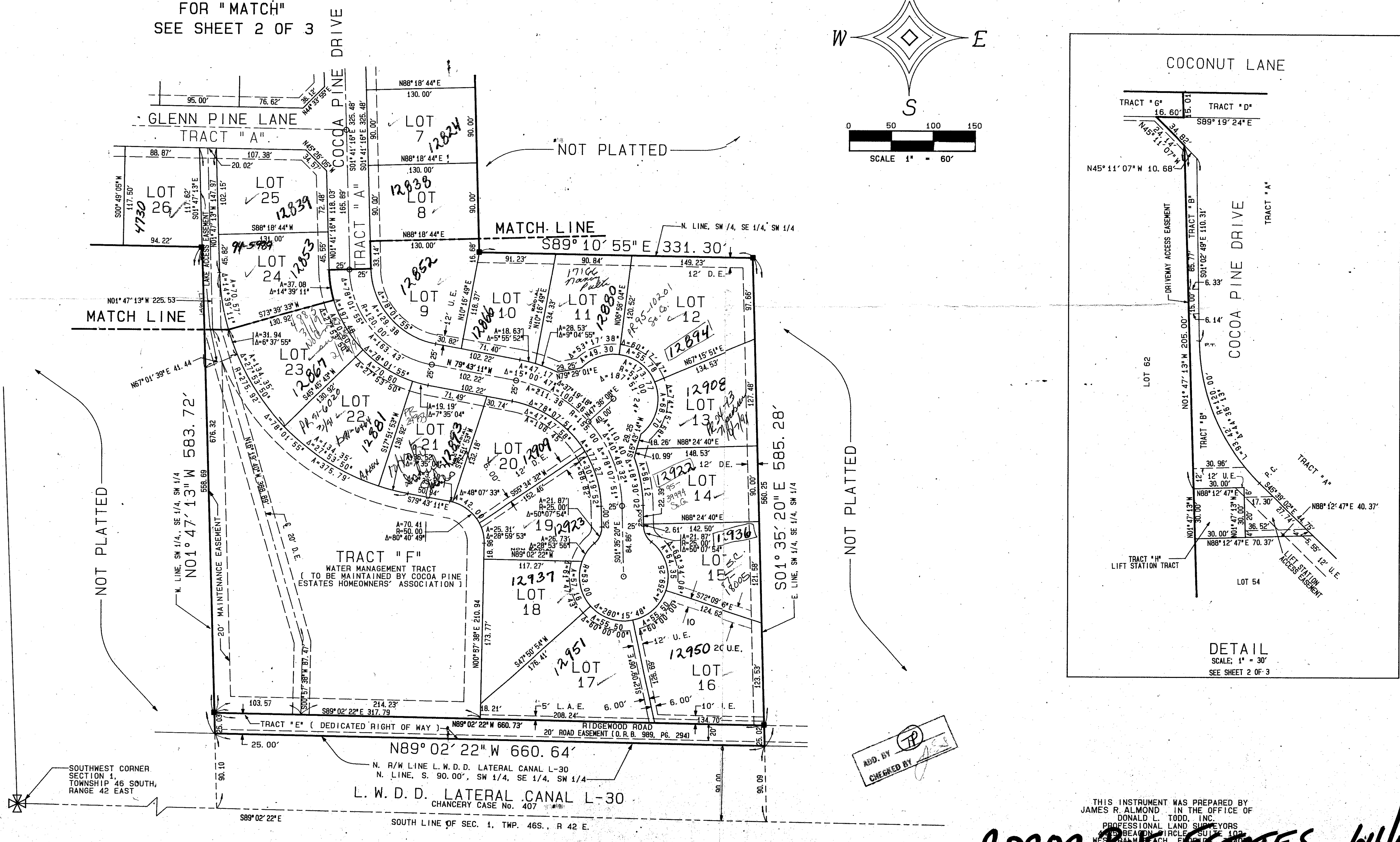
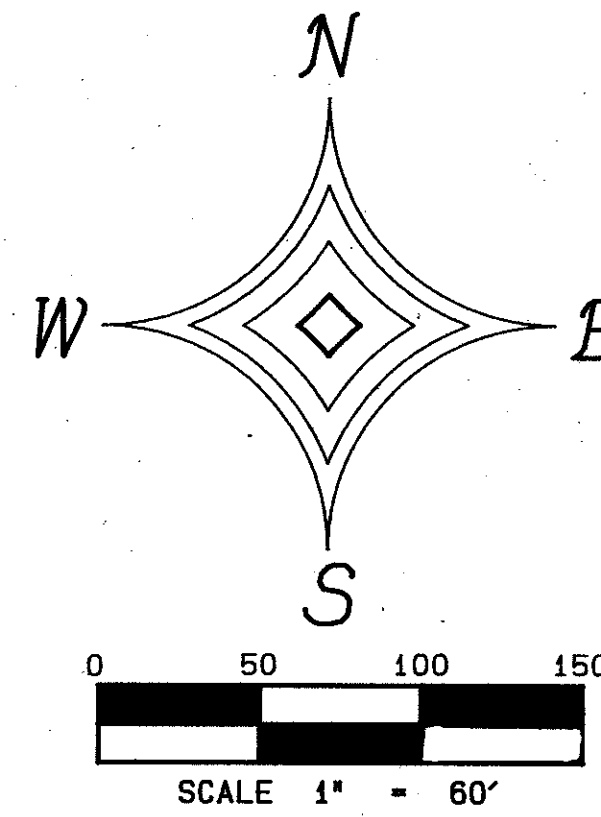
0572-001

46

( A P. R. D. )  
 SITUATE IN SECTION 1, TOWNSHIP 46 SOUTH, RANGE 42 EAST  
 PALM BEACH COUNTY, FLORIDA.  
 JULY 1989 SHEET 3 OF 3

STATE OF FLORIDA  
 COUNTY OF PALM BEACH  
 THIS PLAT WAS FILED FOR  
 RECORD AT \_\_\_\_\_  
 THIS \_\_\_\_\_ DAY OF \_\_\_\_\_  
 1989 AND  
 DULY RECORDED IN PLAT BOOK  
 \_\_\_\_\_ ON PAGES \_\_\_\_\_ AND  
 \_\_\_\_\_  
 JOHN B. DUNKLE, CLERK  
 CIRCUIT COURT  
 BY \_\_\_\_\_ DC

FOR "MATCH"  
 SEE SHEET 2 OF 3



SUPERVISOR: Cocoa Pine Estates  
 BOOK: 041  
 PAGE: 476  
 FLOOD: MAP # 2058  
 ZONING: R5  
 CLASS: 36  
 ZIP CODE: 33426  
 SUB-DIVISION: Cocoa Pine Estates P.R.D.  
 11/01/92 TSZ 542

SOUTHWEST CORNER  
 SECTION 1,  
 TOWNSHIP 46 SOUTH,  
 RANGE 42 EAST

N. R/W LINE L. W. D. D. LATERAL CANAL L-30  
 N. LINE, S. 90.00', SW 1/4, SE 1/4, SW 1/4  
 L. W. D. D. LATERAL CANAL L-30  
 CHANCERY CASE No. 407  
 SOUTH LINE OF SEC. 1, TWP. 46S., R 42 E.

ADD. BY [initials]  
 CHECKED BY [initials]

Pet. 86-142A  
 ALLOCATION #0001

DETAIL  
 SCALE: 1" = 30'  
 SEE SHEET 2 OF 3

0572-001

KEY MAP

SHEET 2 OF 3

SHEET 3 OF 3

COCOA PINE ESTATES 64/46

THIS INSTRUMENT WAS PREPARED BY  
 JAMES R. ALMOND IN THE OFFICE OF  
 DONALD L. TODD, INC.  
 PROFESSIONAL LAND SURVEYORS  
 100 BEACON CIRCLE SUITE 100  
 WEST PALM BEACH, FLORIDA 33411