

STATE OF FLORIDA
COUNTY OF PALM BEACH
THIS PLAT WAS FILED FOR
RECORD THIS DAY OF
AD, 1988 AND DULY RECORDED
IN PLAT BOOK _____ ON PAGES

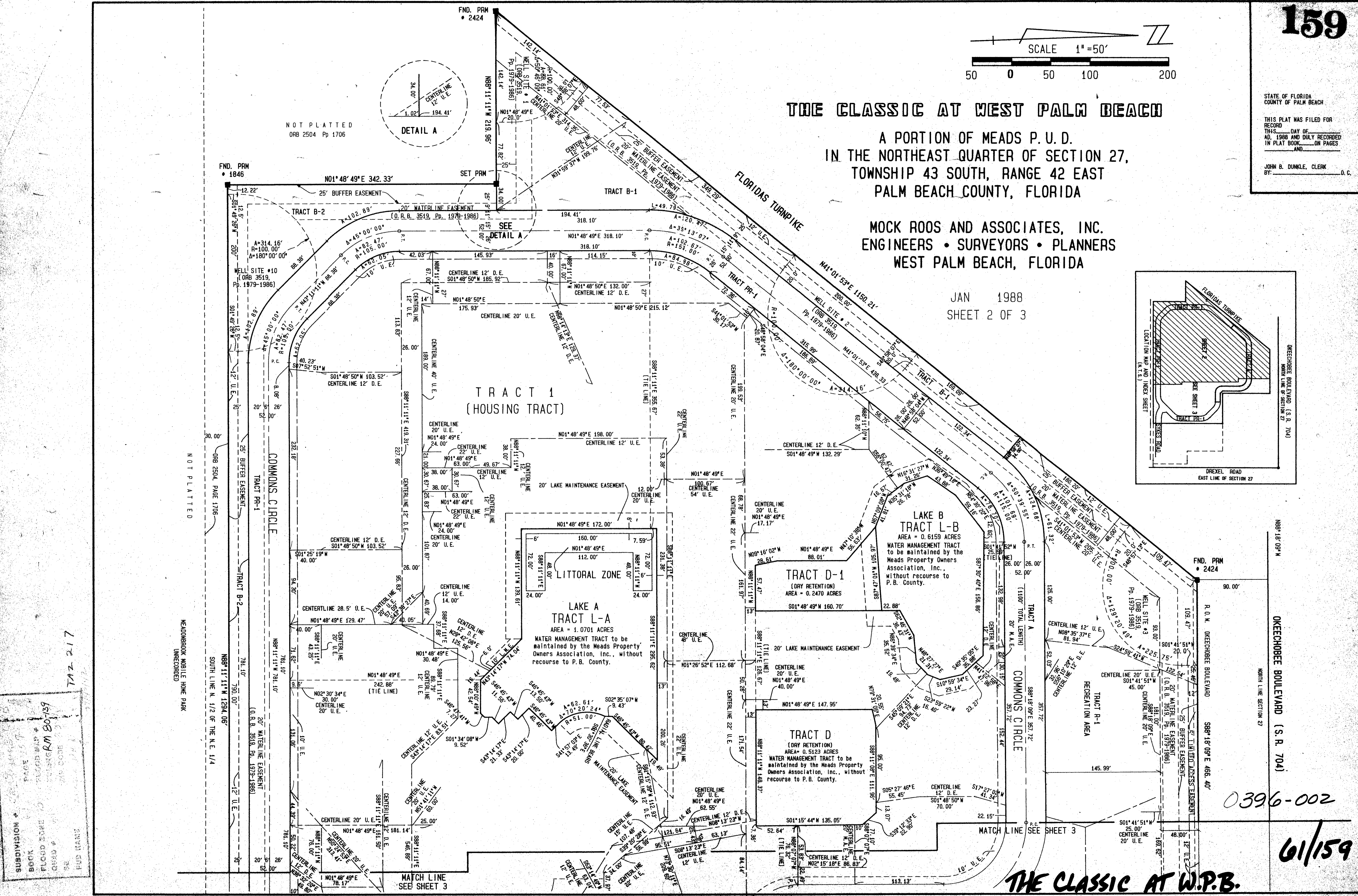
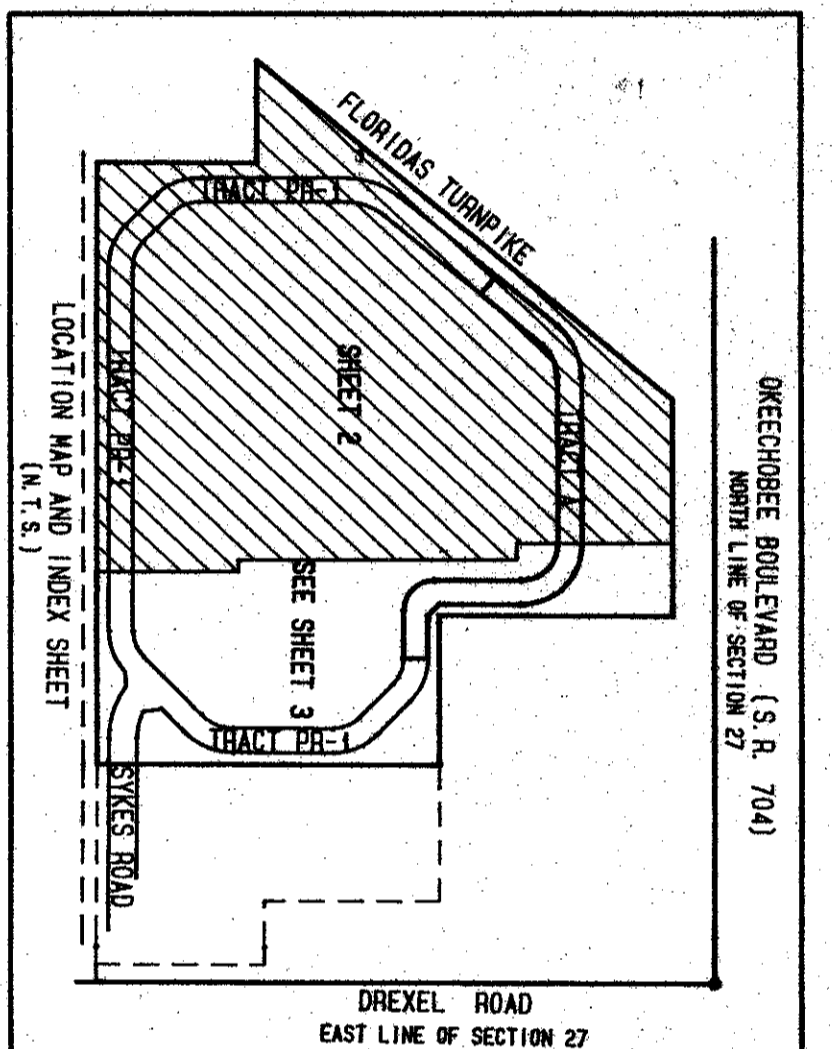
AND
JOHN B. DUNKLE, CLERK
BY: _____ O. C.

THE CLASSIC AT WEST PALM BEACH

A PORTION OF MEADS P. U. D.
IN THE NORTHEAST QUARTER OF SECTION 27,
TOWNSHIP 43 SOUTH, RANGE 42 EAST
PALM BEACH COUNTY, FLORIDA

MOCK ROOS AND ASSOCIATES, INC.
ENGINEERS • SURVEYORS • PLANNERS
WEST PALM BEACH, FLORIDA

JAN 1988
SHEET 2 OF 3



712.217
BOOK FLOOD ZONE
PLAN RM 80-139
FUD WARS
NO. 10151828

0396-002
61/159
THE CLASSIC AT W.P.B.