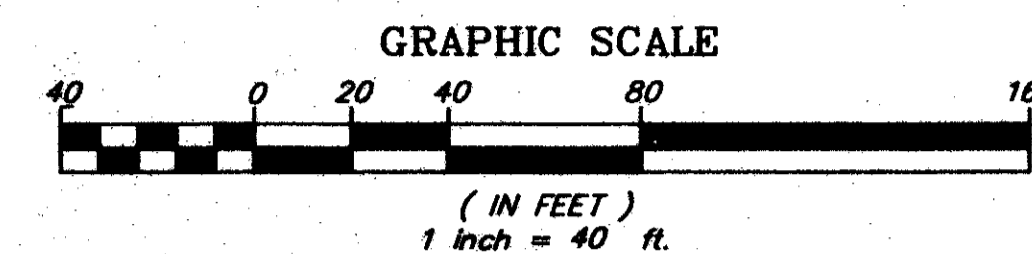


FAIRWAYS AT BOCA GOLF & TENNIS PLAT NO. 2

A PART OF PALM AIRE EAST (P.U.D.)
A PORTION OF THE N 1/2 OF SECTION 36, TOWNSHIP 46 SOUTH, RANGE 42 EAST,
AND A PORTION OF THE N 1/2 OF SECTION 31, TOWNSHIP 46 SOUTH, RANGE 43 EAST,
PALM BEACH COUNTY, FLORIDA
SHEET 2 OF 2

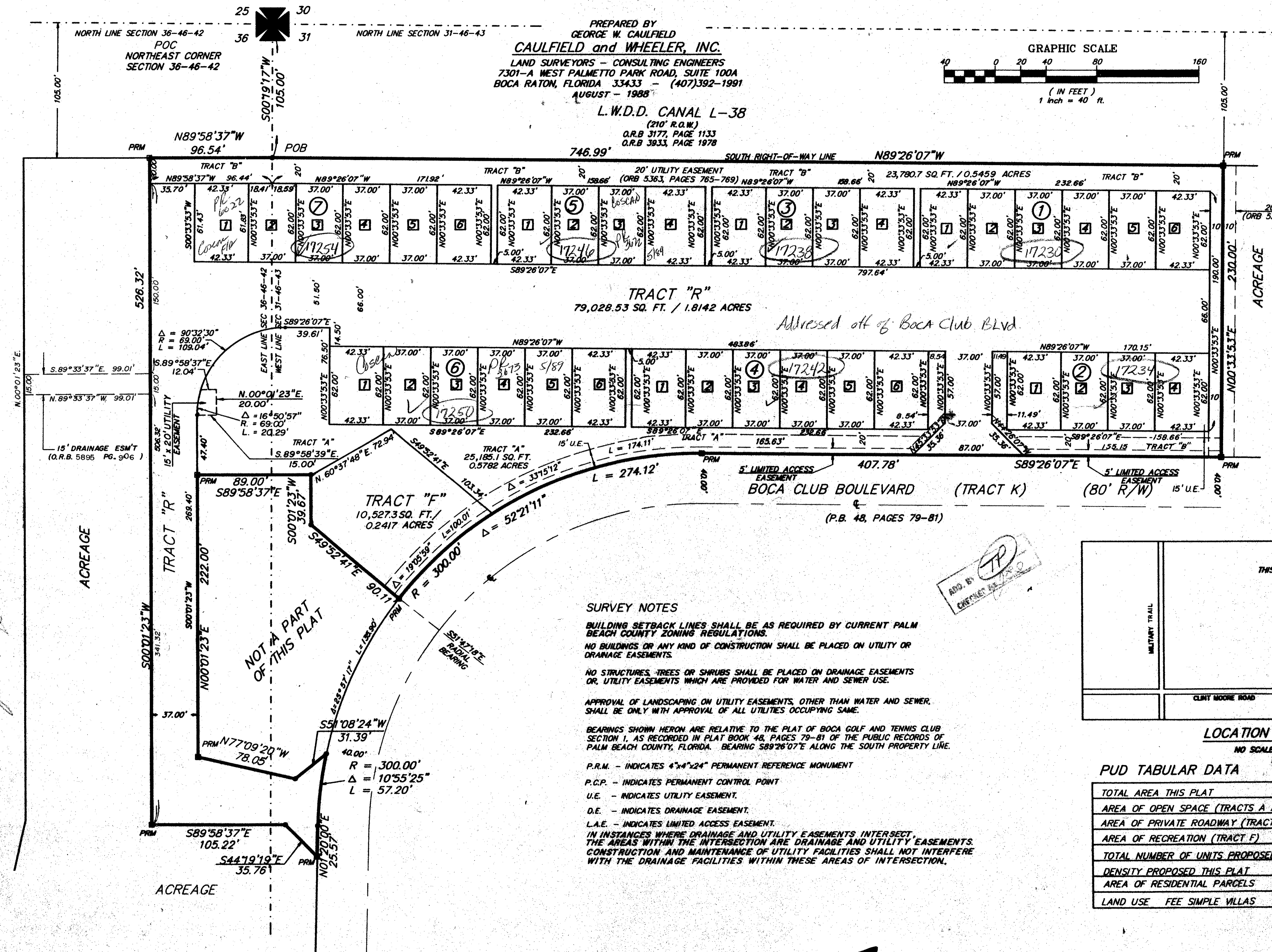
PREPARED BY
GEORGE W. CAULFIELD
CAULFIELD and WHEELER, INC.
LAND SURVEYORS - CONSULTING ENGINEERS
7301-A WEST PALMETTO PARK ROAD, SUITE 100A
BOCA RATON, FLORIDA 33433 - (407)392-1991
AUGUST - 1988

L.W.D.D. CANAL L-38
(210' R.O.W.)
O.R.B. 3177, PAGE 1133
O.R.B. 3933, PAGE 1978



STATE OF FLORIDA
COUNTY OF PALM BEACH
THIS PLAT WAS FILED FOR
RECORD AT _____ M.
THIS _____ DAY OF _____
A.D. 1988, AND DULY
RECORDED IN PLAT BOOK
_____ ON PAGE

JOHN B. DUNKLE,
CLERK CIRCUIT COURT
BY _____
DEPUTY CLERK



WATER MANAGEMENT TRACT L-7
(O.R.B. 5576, PGS. 822-825)

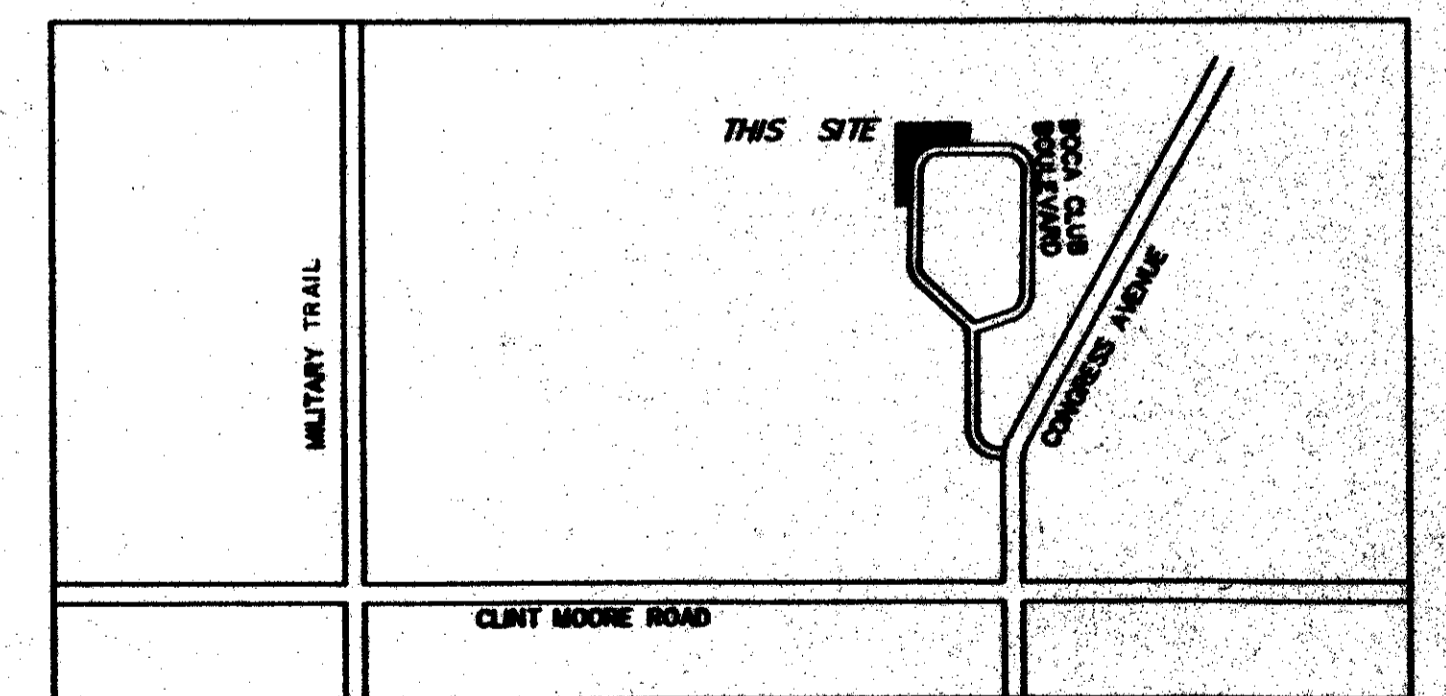
TAZ 593
for info
3/19/88

SUBDIVISION OF PALM AIRE EAST
BOOK 61, PAGE 100
FLOOD ZONE MAP
QUAD 8-81-1
SE
PUD NAME: PALM AIRE EAST

SURVEY NOTES

- BUILDING SETBACK LINES SHALL BE AS REQUIRED BY CURRENT PALM BEACH COUNTY ZONING REGULATIONS.
- NO BUILDINGS OR ANY KIND OF CONSTRUCTION SHALL BE PLACED ON UTILITY OR DRAINAGE EASEMENTS.
- NO STRUCTURES, TREES OR SHRUBS SHALL BE PLACED ON DRAINAGE EASEMENTS OR UTILITY EASEMENTS WHICH ARE PROVIDED FOR WATER AND SEWER USE.
- APPROVAL OF LANDSCAPING ON UTILITY EASEMENTS, OTHER THAN WATER AND SEWER, SHALL BE ONLY WITH APPROVAL OF ALL UTILITIES OCCUPYING SAME.
- BEARINGS SHOWN HERON ARE RELATIVE TO THE PLAT OF BOCA GOLF AND TENNIS CLUB SECTION 1, AS RECORDED IN PLAT BOOK 48, PAGES 79-81 OF THE PUBLIC RECORDS OF PALM BEACH COUNTY, FLORIDA. BEARING S89°26'07"E ALONG THE SOUTH PROPERTY LINE.
- P.R.M. - INDICATES 4"x4"x24" PERMANENT REFERENCE MONUMENT
- P.C.P. - INDICATES PERMANENT CONTROL POINT
- U.E. - INDICATES UTILITY EASEMENT.
- D.E. - INDICATES DRAINAGE EASEMENT.
- L.A.E. - INDICATES LIMITED ACCESS EASEMENT.
- IN INSTANCES WHERE DRAINAGE AND UTILITY EASEMENTS INTERSECT, THE AREAS WITHIN THE INTERSECTION ARE DRAINAGE AND UTILITY EASEMENTS. CONSTRUCTION AND MAINTENANCE OF UTILITY FACILITIES SHALL NOT INTERFERE WITH THE DRAINAGE FACILITIES WITHIN THESE AREAS OF INTERSECTION.

TP
APPROVED BY
DATE



LOCATION MAP

PUD TABULAR DATA

0285-006

TOTAL AREA THIS PLAT	5.1818 ACRES
AREA OF OPEN SPACE (TRACTS A AND B)	1.1241 ACRES
AREA OF PRIVATE ROADWAY (TRACT R)	1.8142 ACRES
AREA OF RECREATION (TRACT F)	0.2417 ACRES
TOTAL NUMBER OF UNITS PROPOSED THIS PLAT	36
DENSITY PROPOSED THIS PLAT	6.95 UNITS/ACRE
AREA OF RESIDENTIAL PARCELS	2.0018 ACRES
LAND USE FEE SIMPLE VILLAS	

FAIRWAYS AT BOCA GOLF & TENNIS, PLAT NO. 2

6/1/57