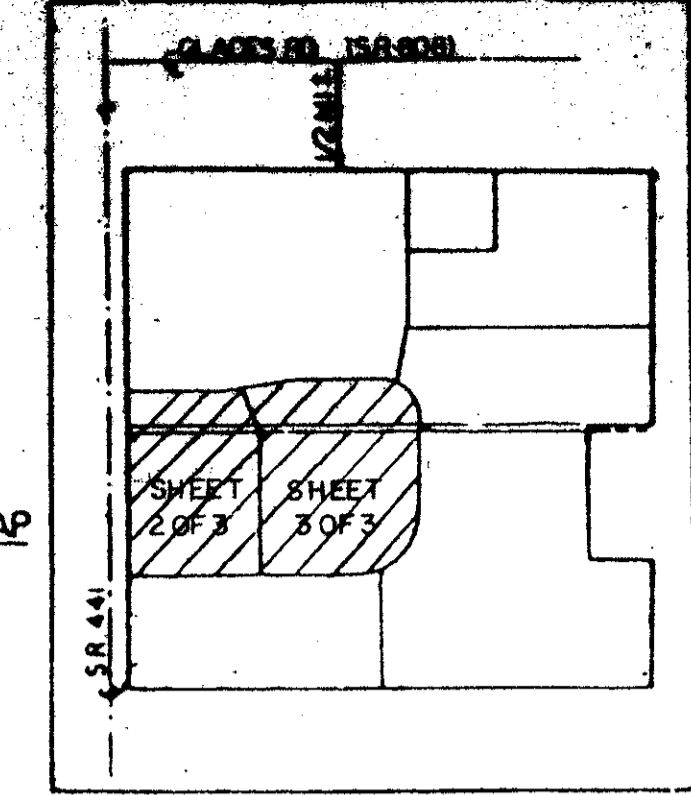


**RAINBERRY WEST OF BOCA PLAT NO. 1**  
A PORTION OF WHICH IS A  
**PART OF RAINBERRY OF WEST BOCA P.U.D.**  
SITUATE IN SECTION 19, TOWNSHIP 47 SOUTH, RANGE 42 EAST, PALM BEACH  
COUNTY, FLORIDA, BEING A REPLAT OF A PORTION OF BLOCK 78, OF  
THE PALM BEACH FARMS COMPANY'S PLAT NO. 3 (PB 2, PAGES 45-54).  
**SHEET 3 OF 3**  
NOVEMBER, 1988

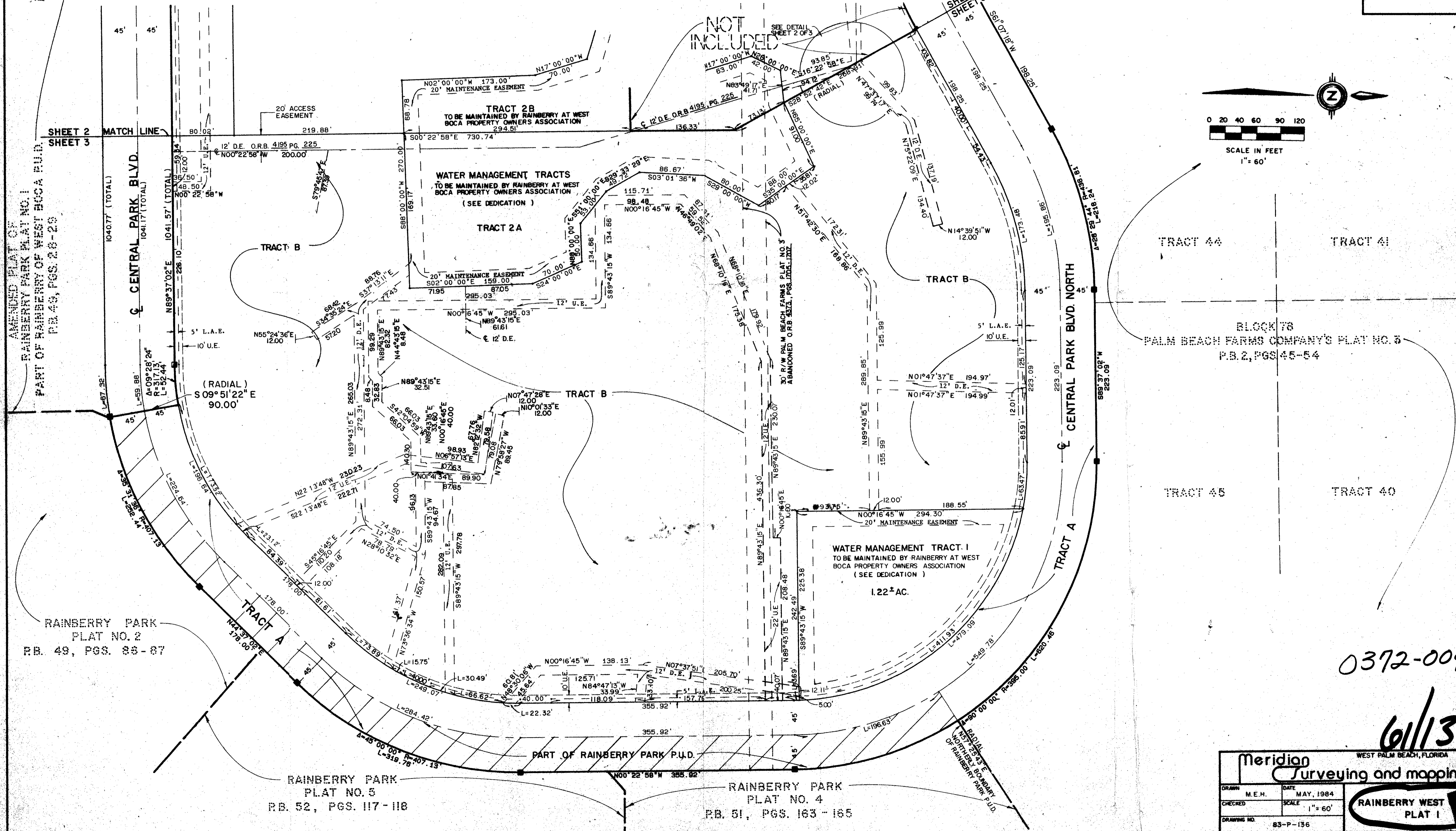
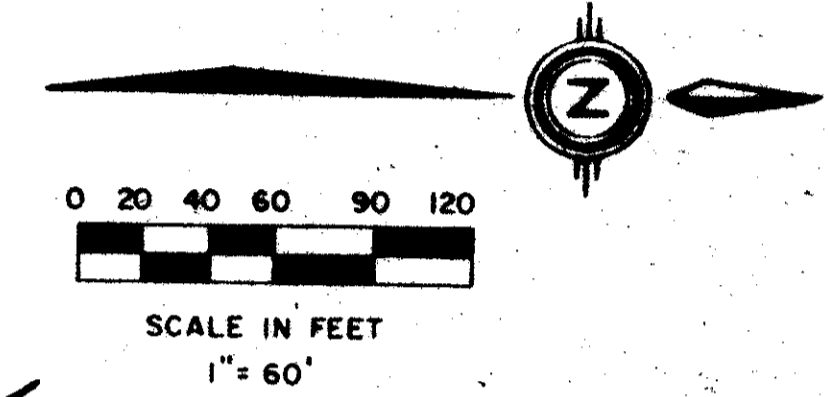
STATE OF FLORIDA  
COUNTY OF PALM BEACH  
THIS PLAT WAS FILED FOR  
RECORD AT \_\_\_\_\_ DAY OF \_\_\_\_\_  
AD, 1988 AND DULY RECORDED  
IN PLAT BOOK \_\_\_\_\_ ON PAGES  
\_\_\_\_\_ AND \_\_\_\_\_  
JOHN B. DUNKLE, CLERK  
CIRCUIT COURT  
BY: \_\_\_\_\_, D.C.



LOCATION MAP  
RTS



*Handwritten notes:*  
SUBDIVISION: Rainberry West of Boca  
BOOK: 139  
PAGE: 2308  
PLAT NO.: 139  
DATE: 11/12/88  
AR: 83-56  
33433  
PUD NAME: Rainberry West of Boca P.U.D.  
1997/12



0372-004

6/1/39

Meridian Surveying and mapping inc. WEST PALM BEACH, FLORIDA  
DRAWN: M.E.H. DATE: MAY, 1984  
CHECKED: SCALE: 1" = 60'  
DRAWING NO.: 83-P-136  
**RAINBERRY WEST PLAT I**