

PALM BEACH POLO EQUESTRIAN CLUB PLAT NO. 3 OF WELLINGTON COUNTRYPLACE, P.U.D.

115

LYING IN LANDS FORMERLY PLATTED AS CHUKKER HILL OF WELLINGTON COUNTRYPLACE - P.U.D.

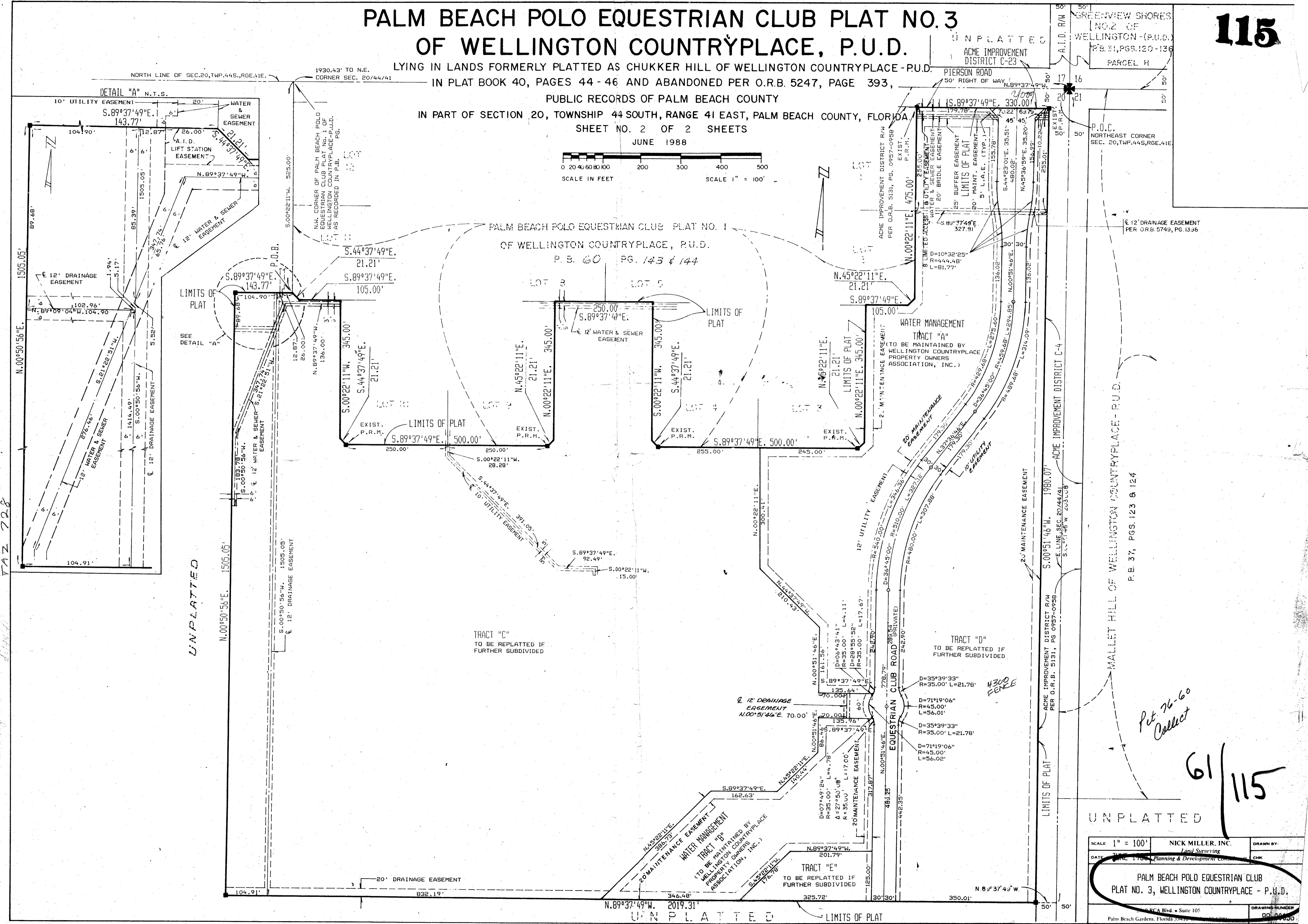
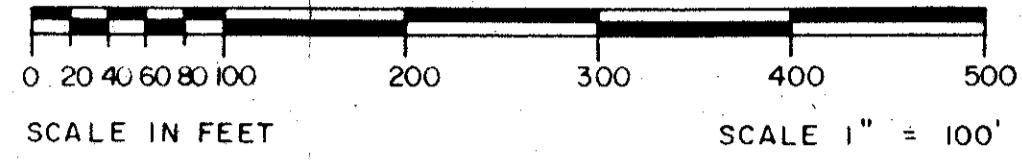
IN PLAT BOOK 40, PAGES 44 - 46 AND ABANDONED PER O.R.B. 5247, PAGE 393,

PUBLIC RECORDS OF PALM BEACH COUNTY

IN PART OF SECTION 20, TOWNSHIP 44 SOUTH, RANGE 41 EAST, PALM BEACH COUNTY, FLORIDA

SHEET NO. 2 OF 2 SHEETS

JUNE 1988



SUBDIVISION # 18 Palm Equestrian Club # 3
 BOOK 61
 PAGE 115
 RE 76-60
 DATE 11/18/88
 BY [Signature]
 FOR [Signature] Wellington Countryplace, Inc.

TAZ 728

UNPLATTED

ACME IMPROVEMENT DISTRICT C-4

MALLETT HILL OF WELLINGTON COUNTRYPLACE - P.U.D.

P.B. 37, PGS. 123 & 124

UNPLATTED

SCALE 1" = 100'	NICK MILLER, INC. Land Surveying	DRAWN BY: [Signature]
DATE: JUNE 1988	PLANNING & DEVELOPMENT CONSULTANTS	CHECK: [Signature]
PALM BEACH POLO EQUESTRIAN CLUB PLAT NO. 3, WELLINGTON COUNTRYPLACE - P.U.D.		
Palm Beach Gardens, Florida 33410		DRAWING NUMBER: 88-00-000

Pt. 76-60
Collect

61/115