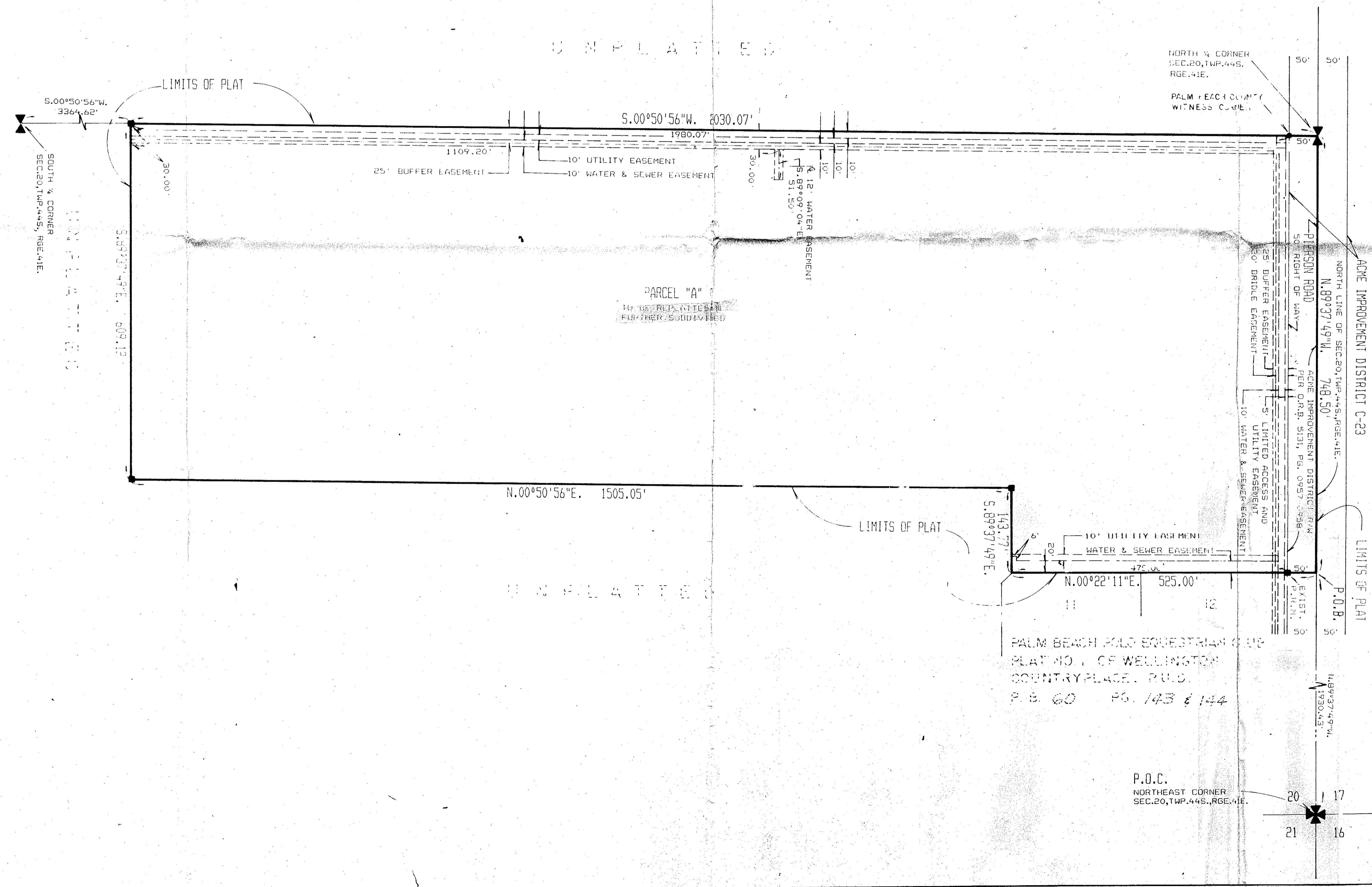
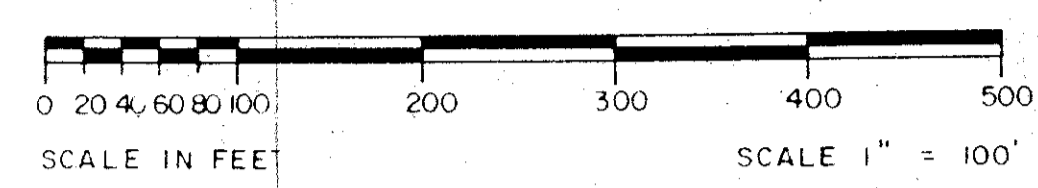


# PALM BEACH POLO EQUESTRIAN CLUB PLAT NO. 2 OF WELLINGTON COUNTRYPLACE, P.U.D.

LYING IN LANDS FORMERLY PLATTED AS CHUKKER HILL OF WELLINGTON COUNTRYPLACE - P.U.D.  
IN PLAT BOOK 40, PAGES 44 - 46 AND ABANDONED PER O.R.B. 5247, PAGE 393,  
PUBLIC RECORDS OF PALM BEACH COUNTY  
IN PART OF SECTION 20, TOWNSHIP 44 SOUTH, RANGE 41 EAST, PALM BEACH COUNTY, FLORIDA.  
SHEET NO. 2 OF 2 SHEETS  
JUNE 1988



SADDLE TRAIL PARK OF WELLINGTON - P.U.D.  
RE 41, PGS. 103-105

*Pts. 76-60  
Collect*

61/113

BOOK 41  
PLATS 103-105  
PAGE 73  
RE 76-60  
PUB. OR. B. 5247  
PAGE 393

SCALE 1" = 100'	N. K. MILLER, INC. Surveyors Planning & Development Consultants	DRAWN BY
DATE: JUNE 1988		CHK.
PALM BEACH POLO EQUESTRIAN CLUB PLAT NO. 2, WELLINGTON COUNTRYPLACE - P.U.D.		
DRAWING NUMBER 88-0003F		

P.O.C.  
NORTHEAST CORNER  
SEC. 20, TWP. 44S., RGE. 41E.

