

PLAT NO. 13A EASTPOINTE SUBDIVISION

101

(A PLANNED UNIT DEVELOPMENT)

BEING A PLAT OF A PORTION OF SECTIONS 27 AND 34, TOWNSHIP 41 SOUTH, RANGE 42 EAST, PALM BEACH COUNTY, FLORIDA.

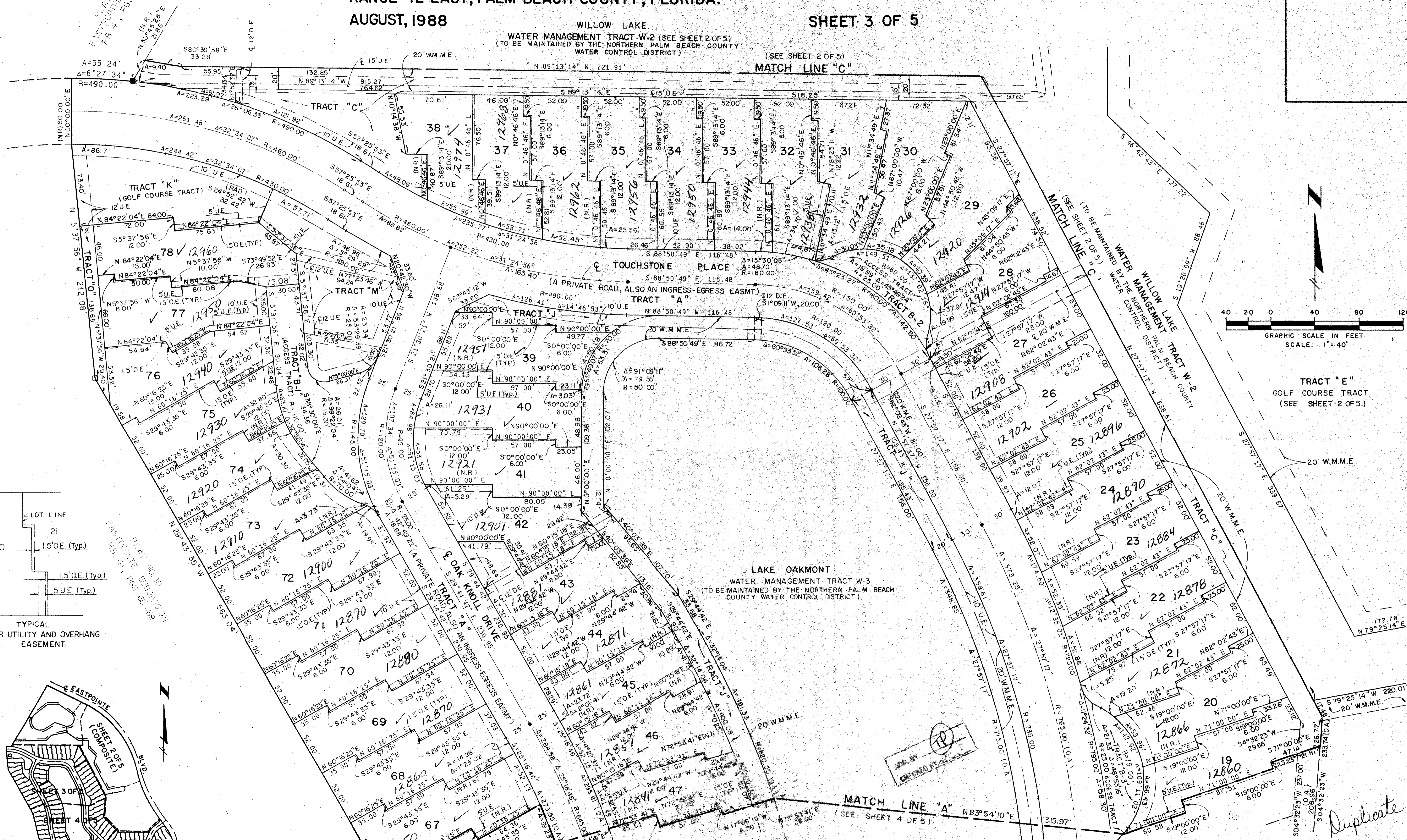
AUGUST, 1988

WILLOW LAKE

SHEET 3 OF 5

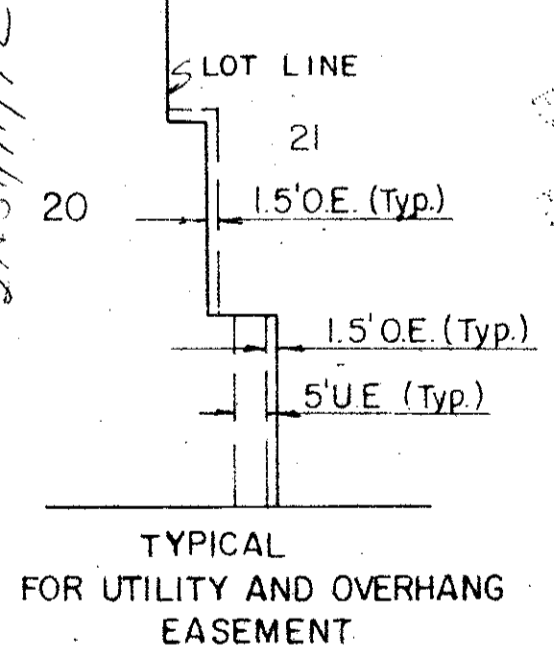
WATER MANAGEMENT TRACT W-2 (SEE SHEET 2 OF 5)
(TO BE MAINTAINED BY THE NORTHERN PALM BEACH COUNTY WATER CONTROL DISTRICT)

(SEE SHEET 2 OF 5)

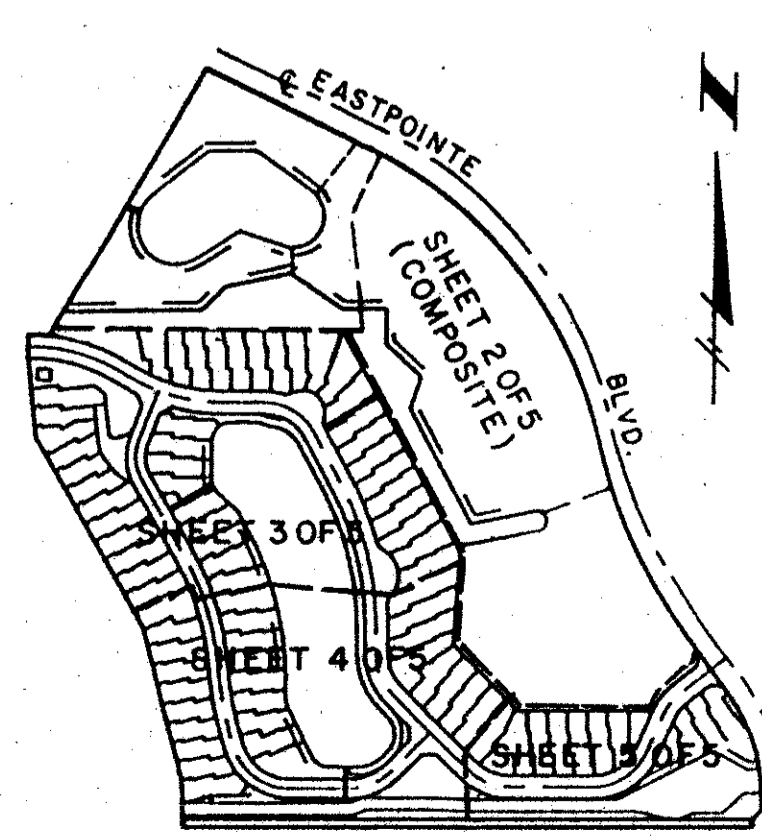


Outpoints
6' B
27
101
15B
RE 80-28
33418

TAZ 797



TYPICAL FOR UTILITY AND OVERHANG EASEMENT



SHEET INDEX
N.T.S.

METRIC ENGINEERING INC.
ENGINEERS - PLANNERS - SURVEYORS
MIAMI - FORT LAUDERDALE
WEST PALM BEACH - PANAMA CITY

PLAT No. 13A
EASTPOINTE SUBDIVISION
SHEET 3 OF 5

Checked by: [Signature]