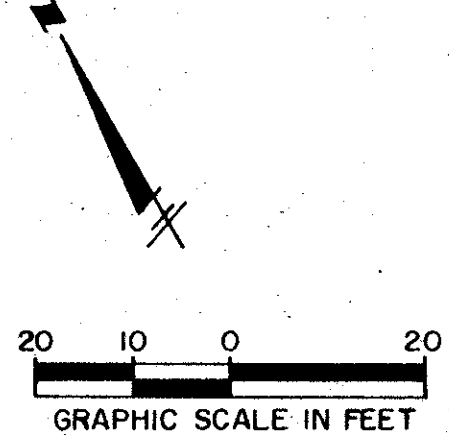
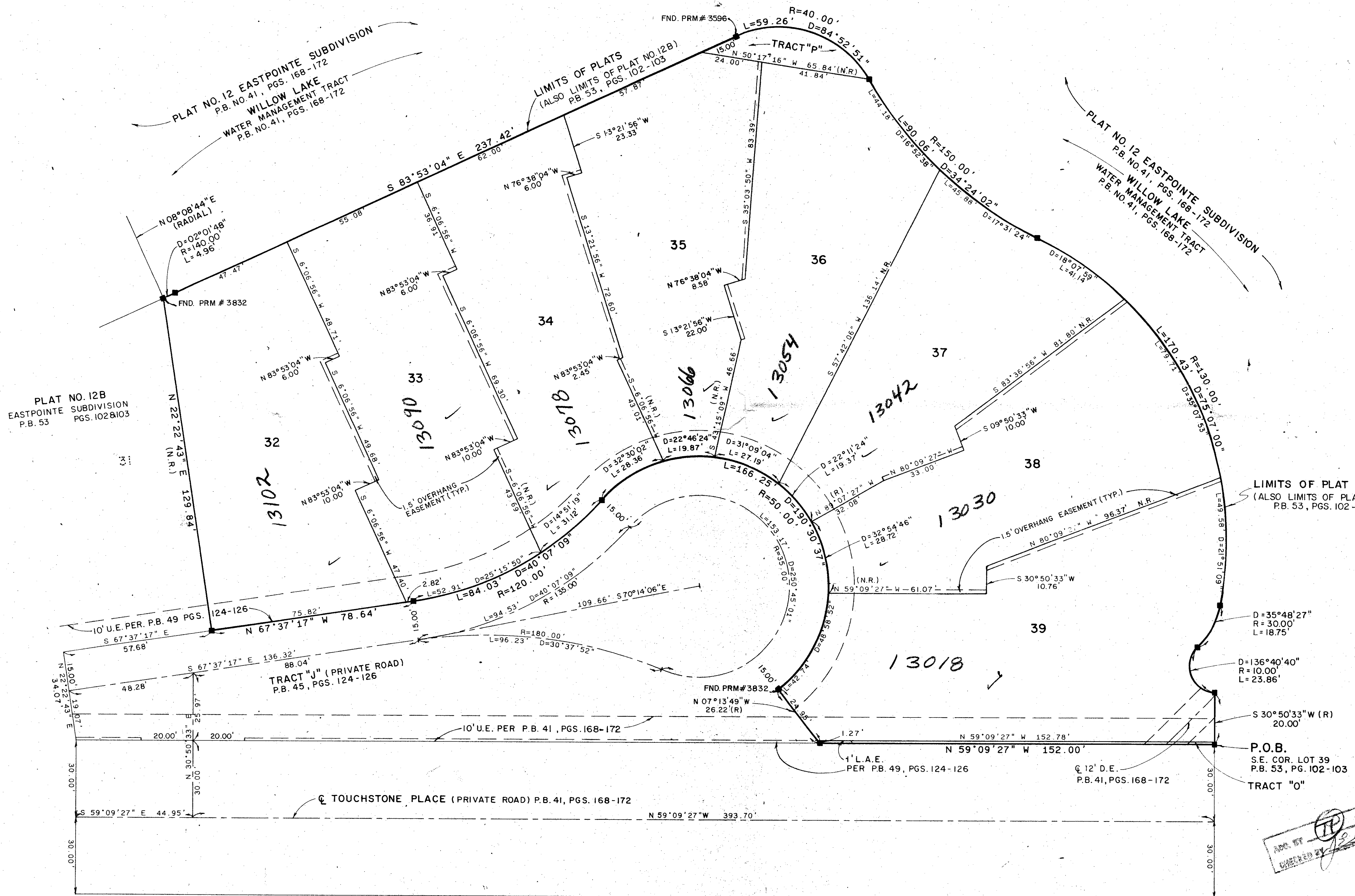


PLAT No.12C EASTPOINTE SUBDIVISION

BEING A REPLAT LOTS 32-39 OF PLAT NO.12 B EASTPOINTE SUBDIVISION,(A PLANNED UNIT DEVELOPMENT),AS RECORDED IN PLAT 53, PAGES 102 & 103,
PUBLIC RECORDS OF PALM BEACH COUNTY, FLORIDA.

MAY, 1988

SHEET 2 OF 2



LEGEND:
D= CENTRAL ANGLE (DELTA)
L= ARC LENGTH

PLAT NO. 12B
EASTPOINTE
SUBDIVISION
P.B. 53
PGS. 102 & 103

PLAT NO. 12 EASTPOINTE SUBDIVISION
P.B. NO. 41, PGS. 168-172
WILLOW LAKE
WATER MANAGEMENT TRACT
P.B. NO. 41, PGS. 168-172

LIMITS OF PLATS
(ALSO LIMITS OF PLAT NO. 12B)
P.B. 53, PGS. 102-103

PLAT NO. 12 EASTPOINTE SUBDIVISION
P.B. NO. 41, PGS. 168-172
WILLOW LAKE
WATER MANAGEMENT TRACT
P.B. NO. 41, PGS. 168-172

LIMITS OF PLAT
(ALSO LIMITS OF PLAT NO. 12B)
P.B. 53, PGS. 102-103

P.O.B.
S.E. COR. LOT 39
P.B. 53, PG. 102-103
TRACT "O"

METRIC ENGINEERING INC.
ENGINEERS - PLANNERS - SURVEYORS
MIAMI - FORT LAUDERDALE
WEST PALM BEACH - PANAMA CITY

6/1/88
M.T.K.
W.N.M.
M.T.K.

PLAT NO. 12C
EASTPOINTE SUBDIVISION

TAZ 797

RE 80-28
12/1/88

Pet. 80-28

6/1/88