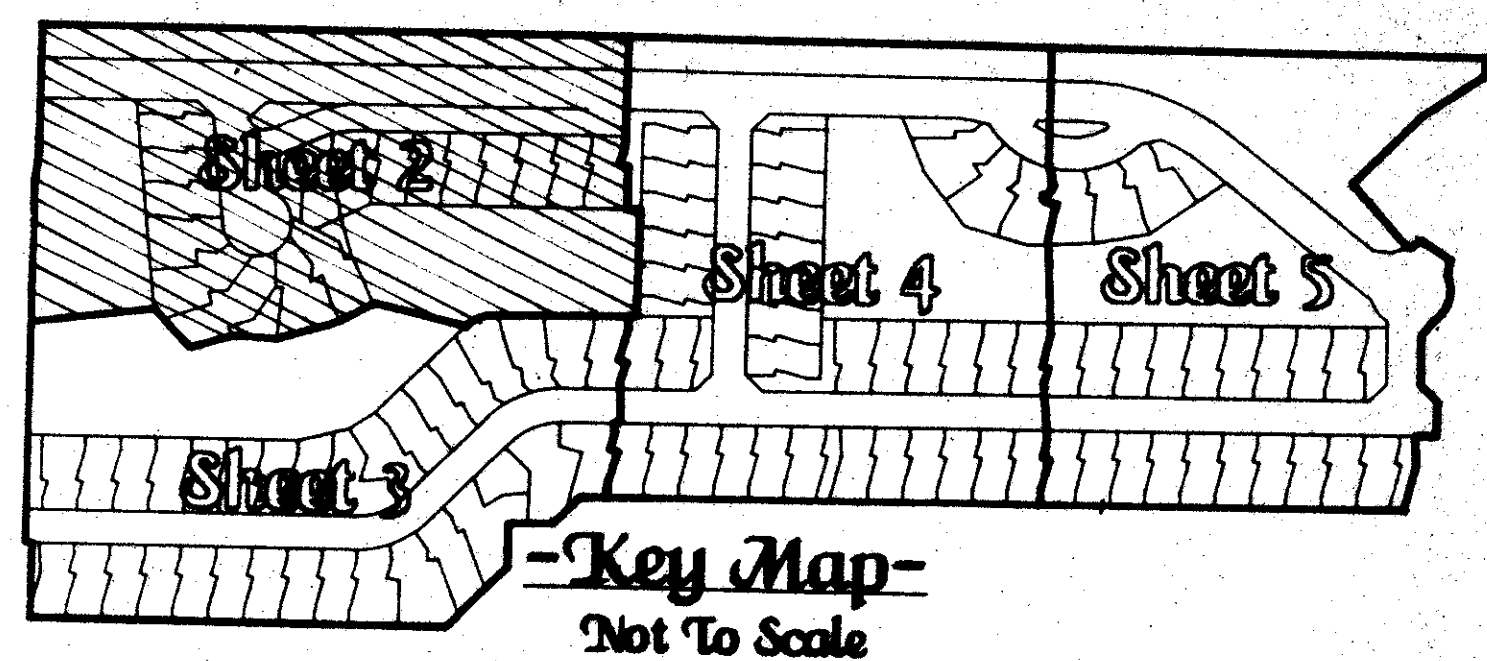


# -Brentwood Of Boca Phases 4 & 5-

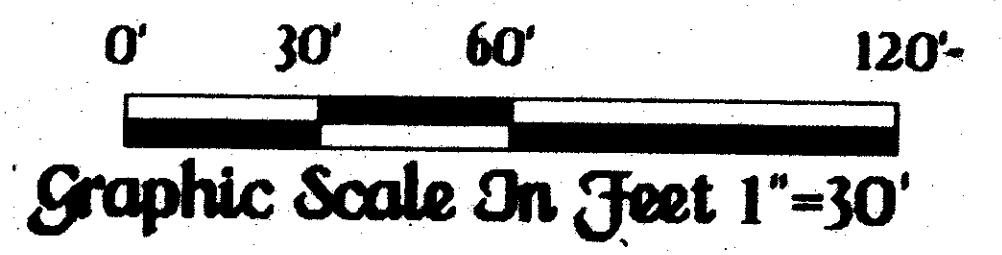
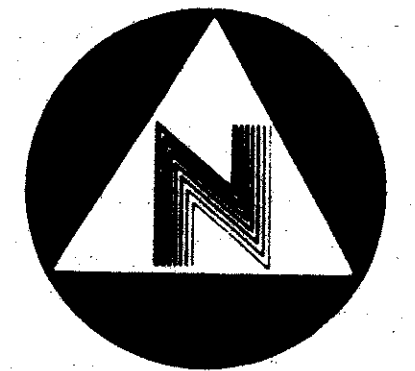
January A.D., Nineteen Hundred Eighty Eight Sheet Two Of Five



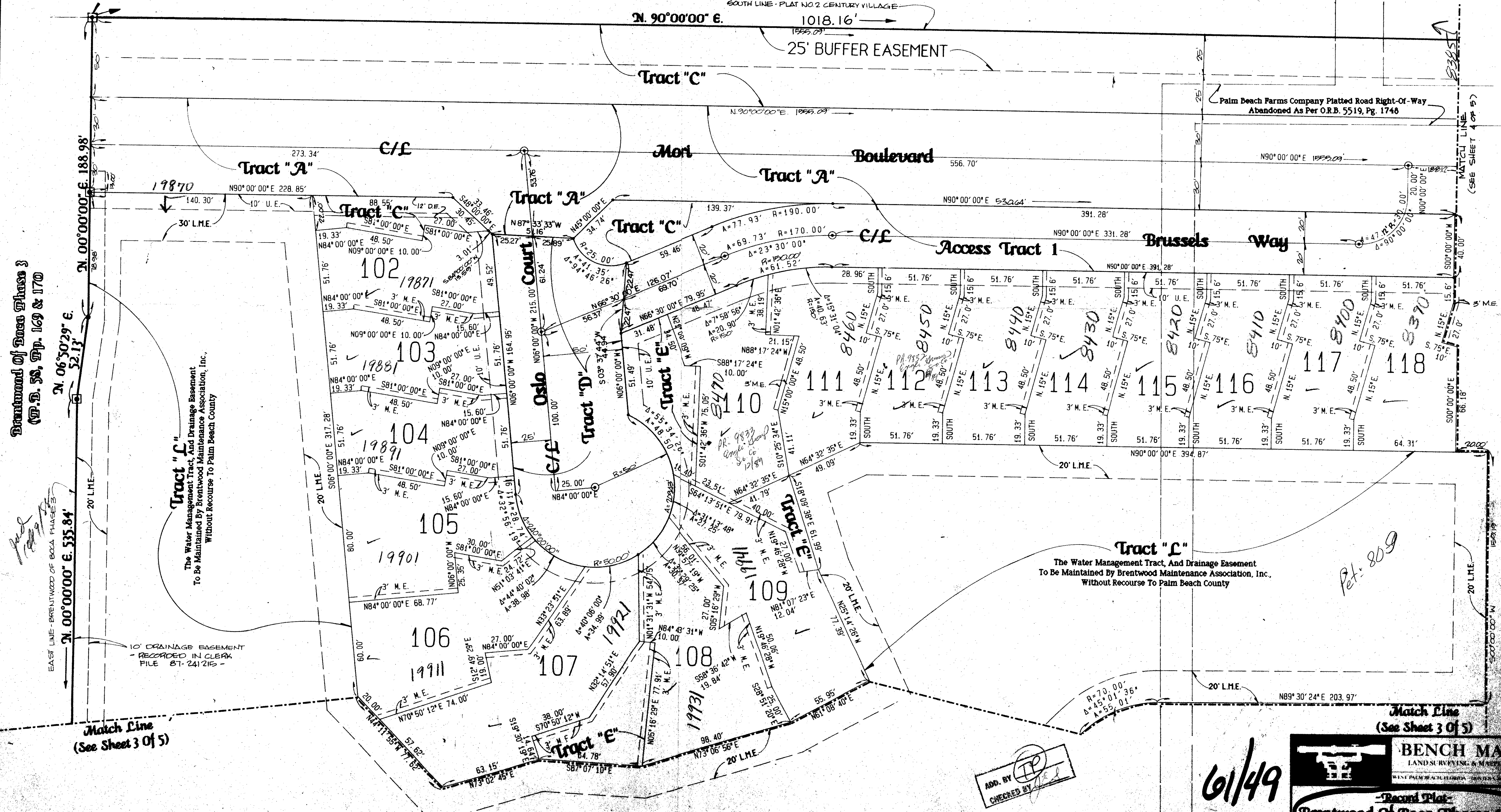
**P.O.B.**  
Point Of Beginning  
Northeast Corner  
Brentwood Of Boca Phase 3  
P.B. 58 Pp. 169 and 170

**Plat No. 2**  
**Century Village West**  
(P.B. 36, Pp. 148-153)

- Legend:**
- Indicates A Permanent Reference Monument # 2424 (P.R.M.)
  - Indicates A Permanent Control Point # 2424 (P.C.P.)
  - D.E. Indicates A Drainage Easement.
  - U.E. Indicates A Utility Easement.
  - L.M.E. Indicates A Lake Maintenance Easement.
  - M.E. Indicates A Maintenance Easement.



State Of Florida )  
County Of Palm Beach )  
This Plat was filed for record  
at \_\_\_\_\_ this \_\_\_\_\_ day of  
\_\_\_\_\_ A.D., 1988, and  
aduly recorded in Plat Book  
\_\_\_\_\_ on Pages \_\_\_\_\_ through  
\_\_\_\_\_.  
John B. Dunkle,  
Clerk of the Circuit Court.  
By \_\_\_\_\_  
Deputy Clerk



SUBDIVISION: Brentwood of Boca Phases 4 & 5  
 BOOK: 6141  
 PAGE: 49  
 RECORD: RM 80-9  
 DATE: 6/1/88  
 BY: Wm. E. Van Campen, R.L.S.  
 172771 5-17/11/88

ADD. BY *[Signature]*  
CHECKED BY *[Signature]*

6/1/88

**Record Plat**  
**Brentwood Of Boca Phases 4 & 5**

**BENCH MARK**  
LAND SURVEYING & MAPPING, INC.  
1152 W. BLUE HERON BOULEVARD, SUITE 121, BOCA RATON, FL 33433

This instrument was prepared by Wm. E. Van Campen, R.L.S., in  
and for the office of Bench Mark Land Surveying & Mapping, Inc.,  
4152 W. Blue Heron Boulevard, Suite 121, Boca Raton, FL

DATE	BY	REVISION