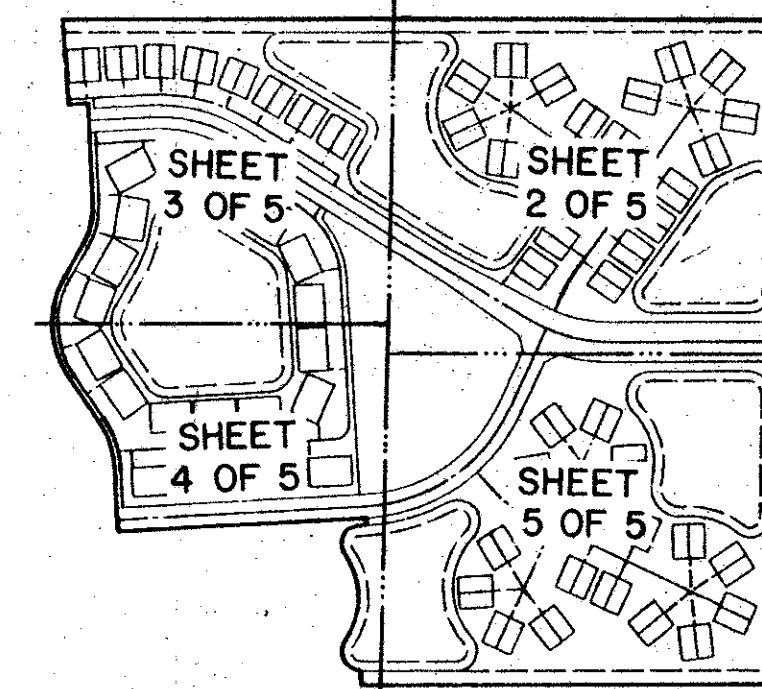


EMERALD POINTE PLAT NO. 1

A PART OF A PLANNED UNIT DEVELOPMENT
LYING IN SECTION 16, TOWNSHIP 46 SOUTH, RANGE 42 EAST,
PALM BEACH COUNTY, FLORIDA.
SHEET 2 OF 5 OCTOBER 1988.

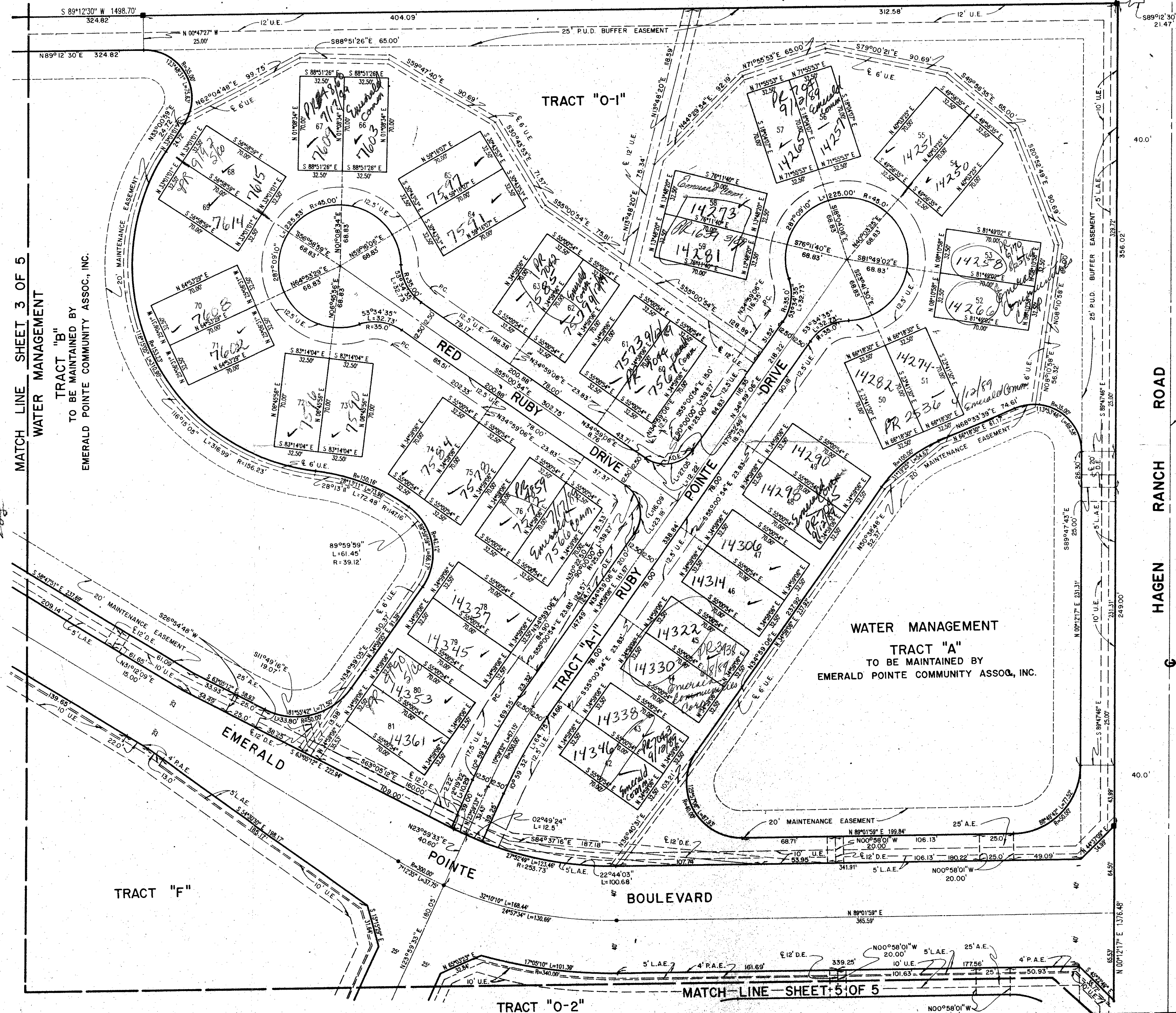
HAGEN RANCH HEIGHTS
(A P.U.D. PLAT BOOK 50, PGS. 125 & 126)

P.O.C.
N.E. CORNER NW 1/4,
SEC. 16, TWP 46S,
RGE. 42E

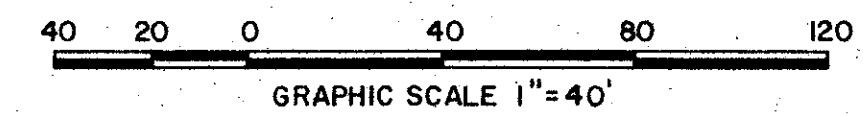


KEY MAP

STATE OF FLORIDA
COUNTY OF PALM BEACH
This Plat was filed for record at _____
M. this _____ day of _____ 19____
and duly recorded in Plat Book No. _____
on Page _____
John B. Dunkle, Clerk of the Circuit Court
By _____ D.C.



BASELINE & CENTERLINE OF HAGEN RANCH ROAD R/M
AS PER RIGHT OF WAY MAP PREPARED BY PALM BEACH
COUNTY ENGINEERING DEPT., DATED 10-15-56, DMG.
NO. 3-55-027, SHEETS 1 OF 8 THROUGH 8 OF 8,
INCLUSIVE, ENTITLED HAGEN ROAD.



APPROVED BY
CHECKED BY

6/1/21

MATCH LINE SHEET 3 OF 5
WATER MANAGEMENT
TRACT "B"
TO BE MAINTAINED BY
EMERALD POINTE COMMUNITY ASSOC., INC.

WATER MANAGEMENT
TRACT "A"
TO BE MAINTAINED BY
EMERALD POINTE COMMUNITY ASSOC., INC.

MATCH LINE SHEET 5 OF 5

Landmark Surveying & Mapping Inc.
1850 FOREST HILL BOULEVARD
PH. (305)433-5405 SUITE 200 W.P.B. FLORIDA

EMERALD POINTE PLAT NO. 1

Handwritten notes:
19/4/88
AS 84-119
1334/16
JAZ 467

Handwritten note: Pet 84-119