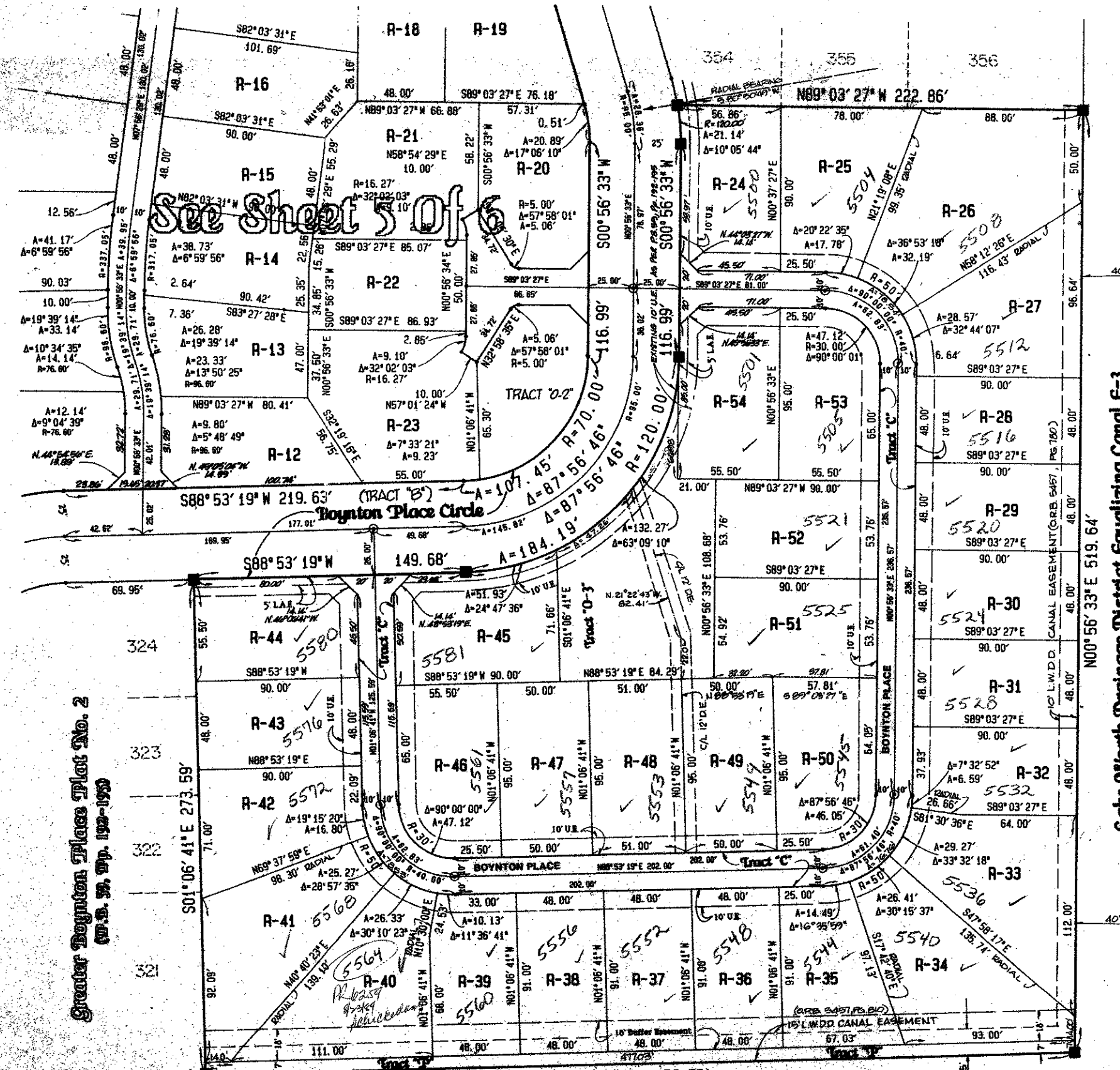


# Greater Boynton Place Plat No. 3

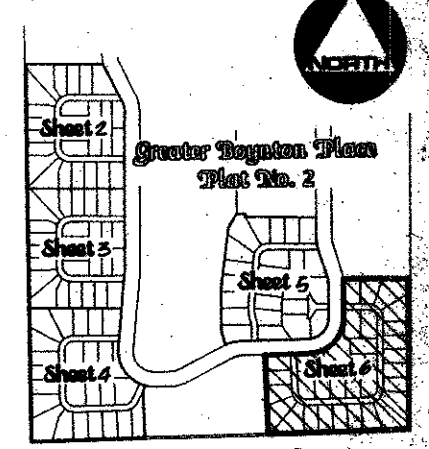
Greater Boynton Place Plat No. 2  
(P.D. 59, Pp. 192-195)

195

State of Florida )  
County of Palm Beach )  
This Plat was filed for record )  
this day of )  
A.D. 1988, and duly recorded )  
in Plat Book )  
Pages )  
through )  
John B. Dunlap )  
Clerk of the Circuit Court )  
By )  
Deputy Clerk



0' 30' 60' 120'  
Graphic Scale In Feet: 1"=30'



Lake Worth Drainage District Equalizing Canal E-3  
(P.D. 118, Pg. 518)

Note:  
Lot lines and/or boundary lines which intersect a curve are not radial to said curve unless otherwise noted.

0498-006  
Pet. 85-162

60/195

This instrument was prepared by Wm. R. Van Campen, R.L.S., and for the office of Bench Mark Land Surveying & Mapping, Inc., 4152 W. Blue Heron Boulevard, Suite 121, Riviera Beach, FL.

**BENCH MARK**  
LAND SURVEYING & MAPPING, INC.  
WEST PALM BEACH, FLORIDA

Record Plat  
**Greater Boynton Place Plat No. 3**

Legend:  
 (Symbol) Indicate A Permanent Reference Monument \* 2424 @ R.M.  
 (Symbol) Indicate A Permanent Control Point \* 2424 @ C.P.  
 (Symbol) Indicate A Drainage Easement  
 (Symbol) Indicate A Utility Easement  
 (Symbol) Indicate A Lake Maintenance Easement

1"=30'

Handwritten notes and signatures on the left margin.

Greater Boynton Place Plat No. 2  
(P.D. 59, Pp. 192-195)

Lake Worth Drainage District Lateral Canal L-25  
(D.B. 6, Pg. 26)