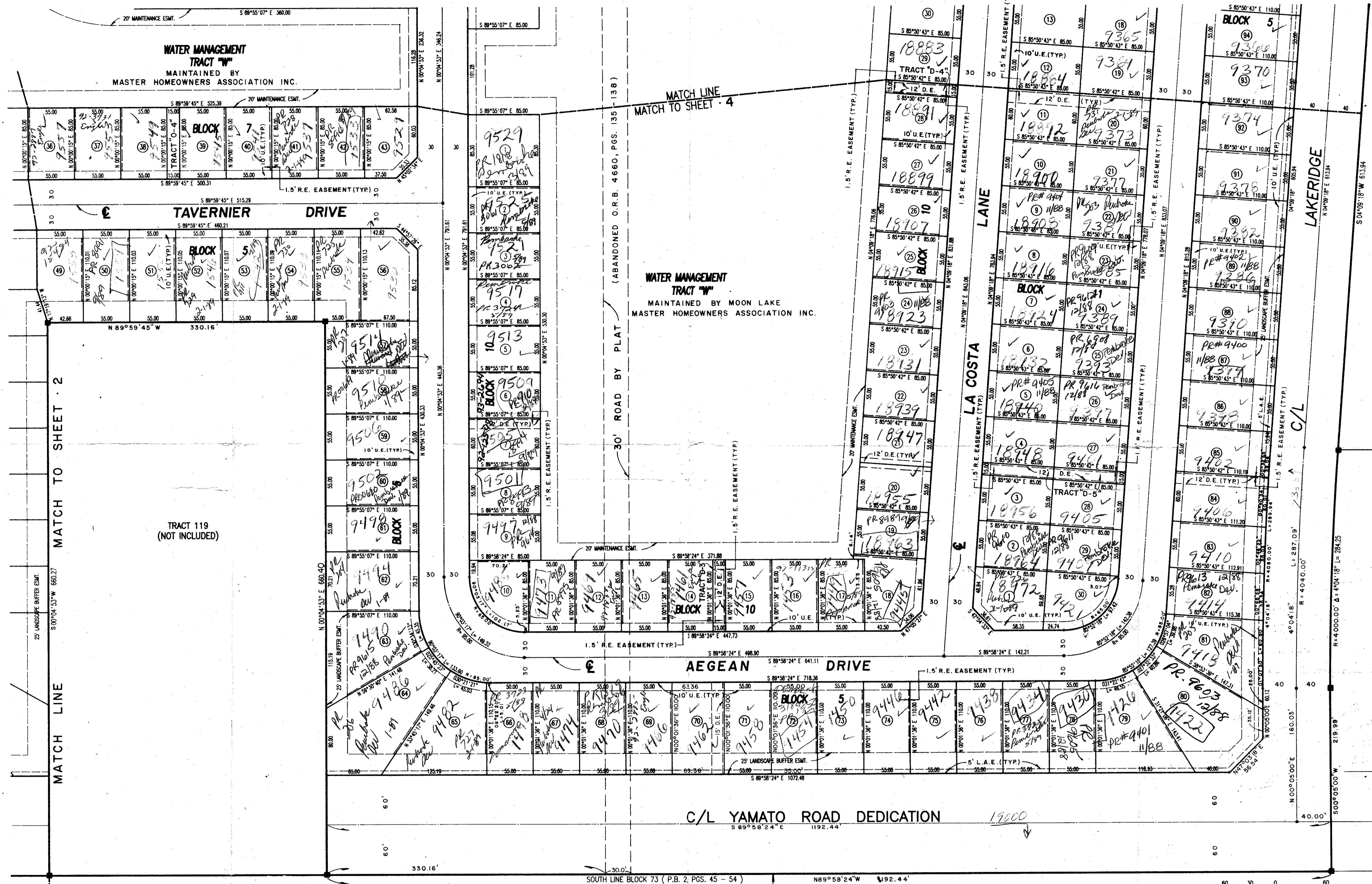
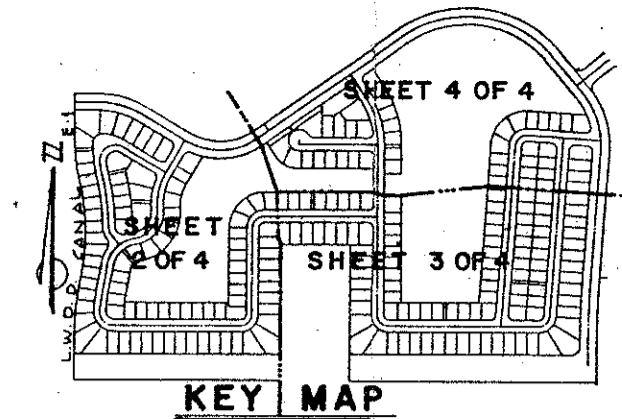


WEITZER SUBDIVISION P.U.D. PLAT NO. TWO

(MOON LAKE P.U.D.)

A REPLAT OF A PORTION OF BLOCK 73, PALM BEACH FARMS PLAT NO. 3, PLAT BOOK 2, PAGES 45 - 54, IN THE S. 1/2 OF SECTION 6 & THE N. 1/2 OF SECTION 7, TWP. 47 S. - RGE. 42 E., PALM BEACH COUNTY, FLORIDA
SHEET 3 OF 4 JULY, 1988.



STATE OF FLORIDA
COUNTY OF PALM BEACH
This Plat was filed for record at _____ M. this _____ day of _____ 19____ and duly recorded in Plat Book No. _____ on Page _____ John B. Dunkle, Clerk Circuit Court By _____ D.C.

WEITZER SUBDIVISION PLAT NO. 3
P.B. 55, PGS. 72-77

UNPLATTED

GRAPHIC SCALE 1"=60'

0349-002

MICHAEL B. SCHORAH & ASSOCIATES, INC.
ENGINEERS • PLANNERS • DEVELOPMENT CONSULTANTS

TEL. (305) 968-0080
1850 FOREST HILL BLVD., SUITE 205
WEST PALM BEACH, FLORIDA 33406

AMERICAN HOMES AT BOCA RATON
(P.B. 33, PGS. 13 - 14)

60/182
WEITZER SUB. PUD #2

76
43
9
15
8