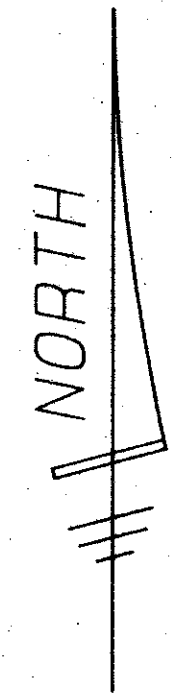


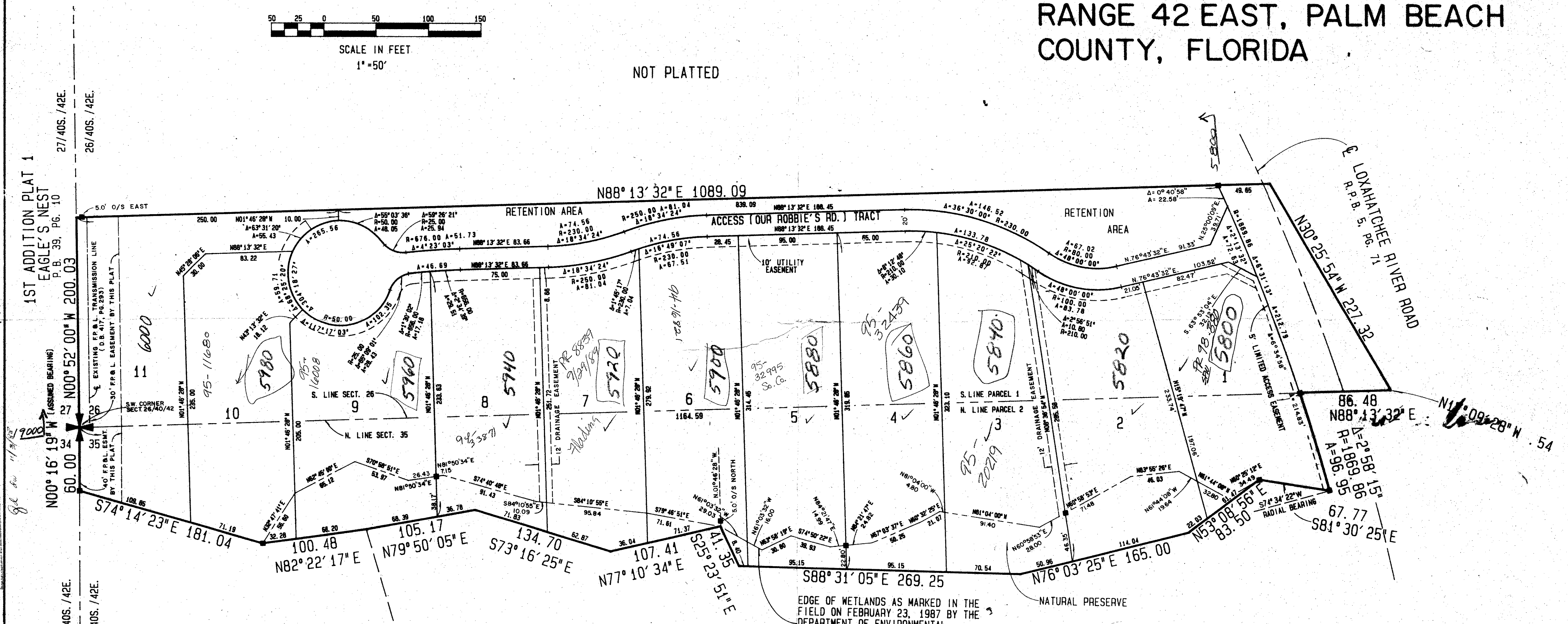
PLAT OF FRAN'S FOLLIE

BEING A PORTION OF SECTION
26 AND 35, TOWNSHIP 40 SOUTH,
RANGE 42 EAST, PALM BEACH
COUNTY, FLORIDA



SCALE IN FEET
1"=50'

NOT PLATTED



EAGLE'S NEST PLAT NO. 1
P.B. 35, PGS. 15 & 16

EDGE OF WETLANDS AS MARKED IN THE
FIELD ON FEBRUARY 23, 1987 BY THE
DEPARTMENT OF ENVIRONMENTAL
REGULATION REPRESENTATIVE
MR. STEVEN SWINGER

NOT PLATTED

APPROVED BY [Signature]
DATE 3/25/88

60/161

0529-001

PLAT OF
FRAN'S FOLLIE

WALLACE BRYANT
CORPORATION
9176 ALTERNATE AIA, LAKE PARK, FLORIDA 33403 • 305/842-4333

FIELD: J.P.	JOB NO.: 86-998°C	F.B. PG.
OFFICE: R.J.C.	DATE: 3/25/88	DWG. NO.: 86-998
C.K.D. F.G.	REF.	SHEET 2 OF 2